

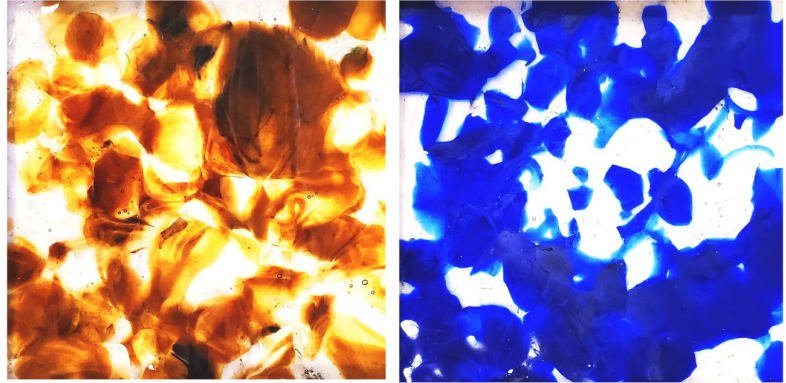
River Connections

Alex Storz - Casey Stamm - Daniel Pund - Mitchell Geis

Mission Statement

In order to recognize those that give back to the city of Muncie, we are proposing an art installation that displays the ways in which Muncie grows with their help. The donor wall shows the city overlaid with the names of the donors.

The ever evolving city displays the annual donors while the eternal river shows the continual contributions of longtime patrons. Muncie can only grow through community support just as this donor wall can only grow with the generosity of Minnetrista's patrons.



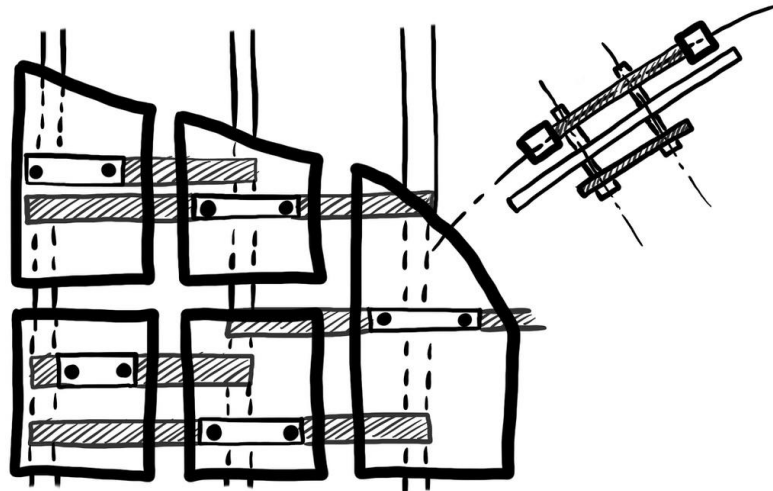
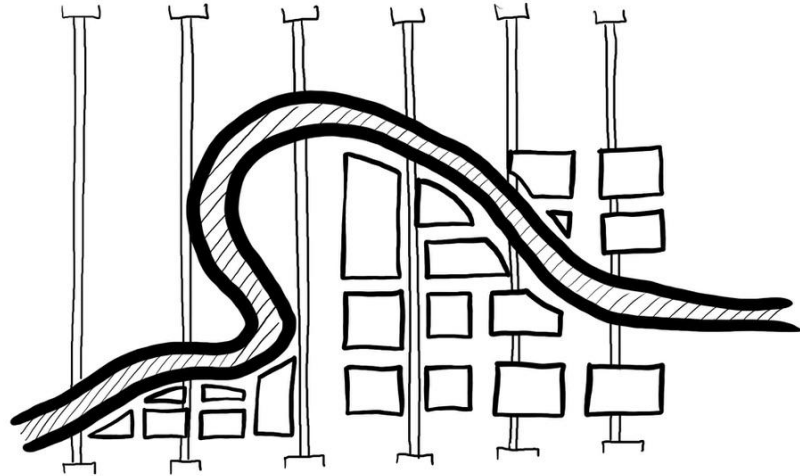
Research Images

During its time in Muncie, Ball Glass produced a vast array of glass products in a variety of colors. One of their most distinct was the iconic 'Ball Blue' produced by sourcing raw materials from the now depleted Hoosier Slide dune. River Connection's color palette was inspired by these colors and their connection to Muncie's history.



Inspiration Drawings

The original sketches show the donor wall created with glass tiles that are reminiscent of Muncie city blocks. All of these tiles would be organized around the White River and be modular. Tiles could be added over time as more donors give to Minnetrista.



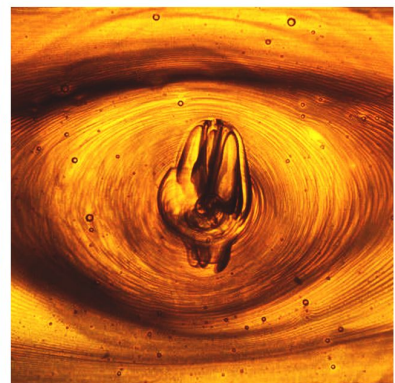
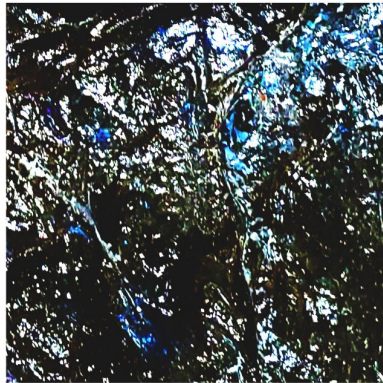
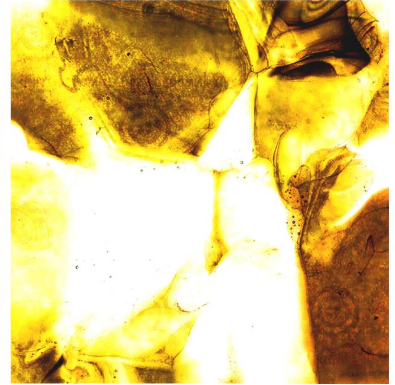
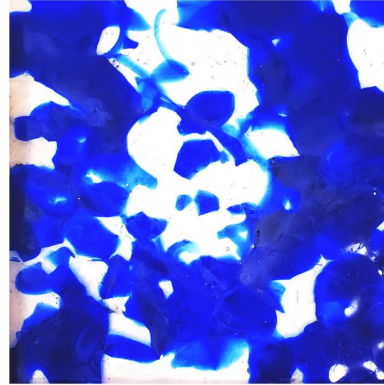
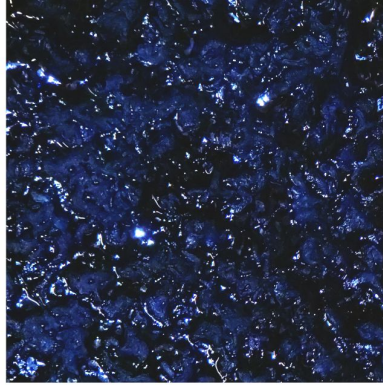
Tiles of Muncie



Test Samples

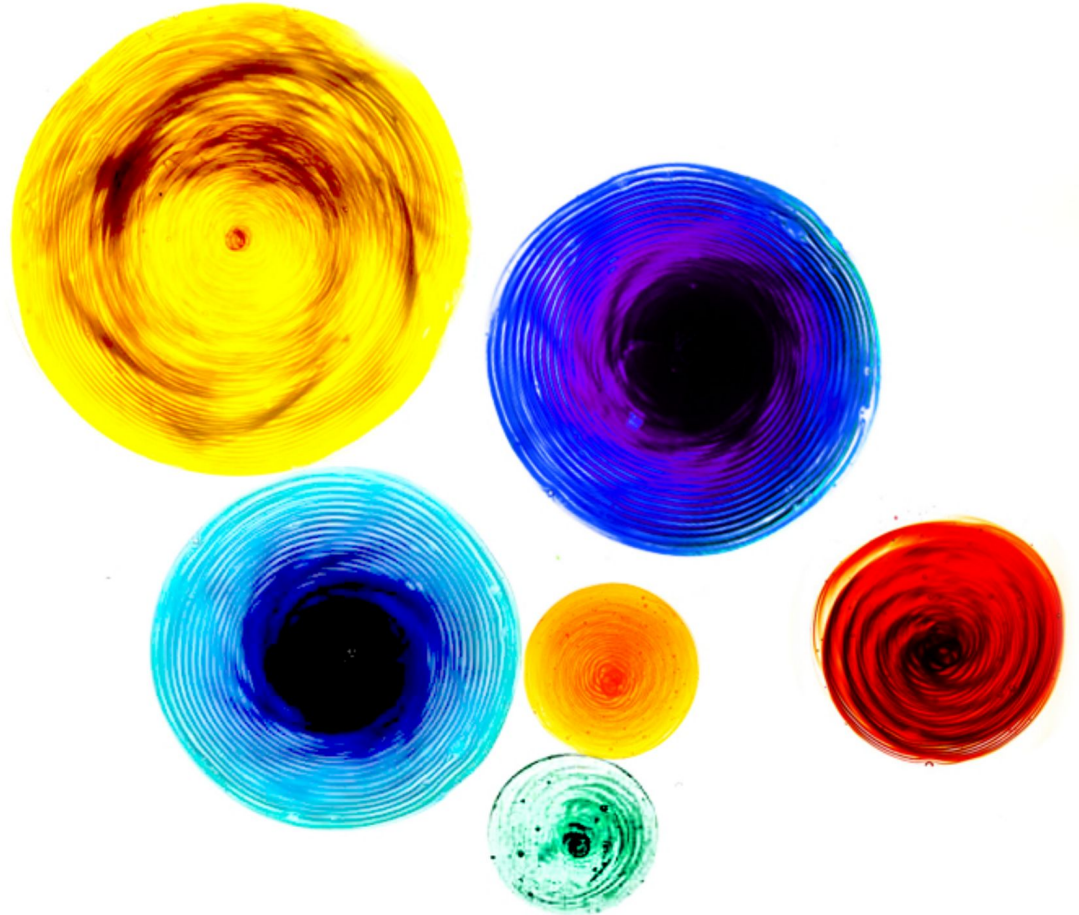
We investigated several processes of texturing and coloring the glass blanks to be used in the donor wall assembly. The textures were inspired by the ebb and flow of the white river, while the colors draw from the historic Ball Glass colors.

The far left pair pressed organic materials into molten glass to achieve textures, the central two fused recycled glass, using the contrast to achieve visual texture, and the far right pair use bullseye glass to create patterning.



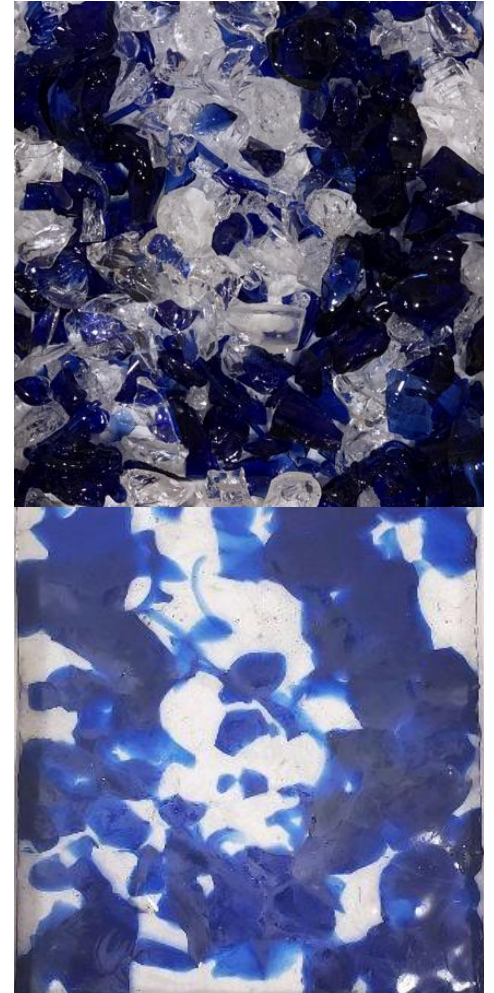
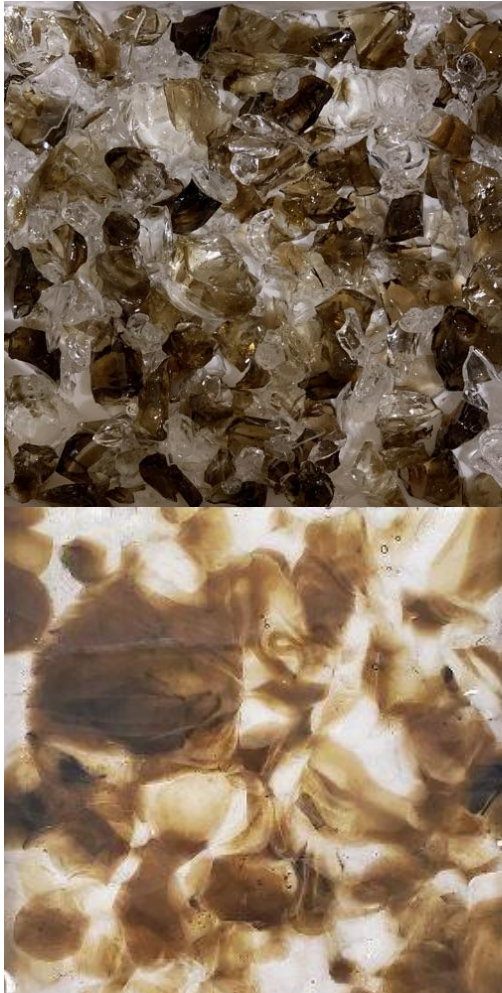
Test Samples

This process involves using a flower pot to 'swirl' bullseye glass within a kiln. The process calls back to the in-the-furnace swirls that occurred as Ball Glass switched between colors in their manufacturing process.



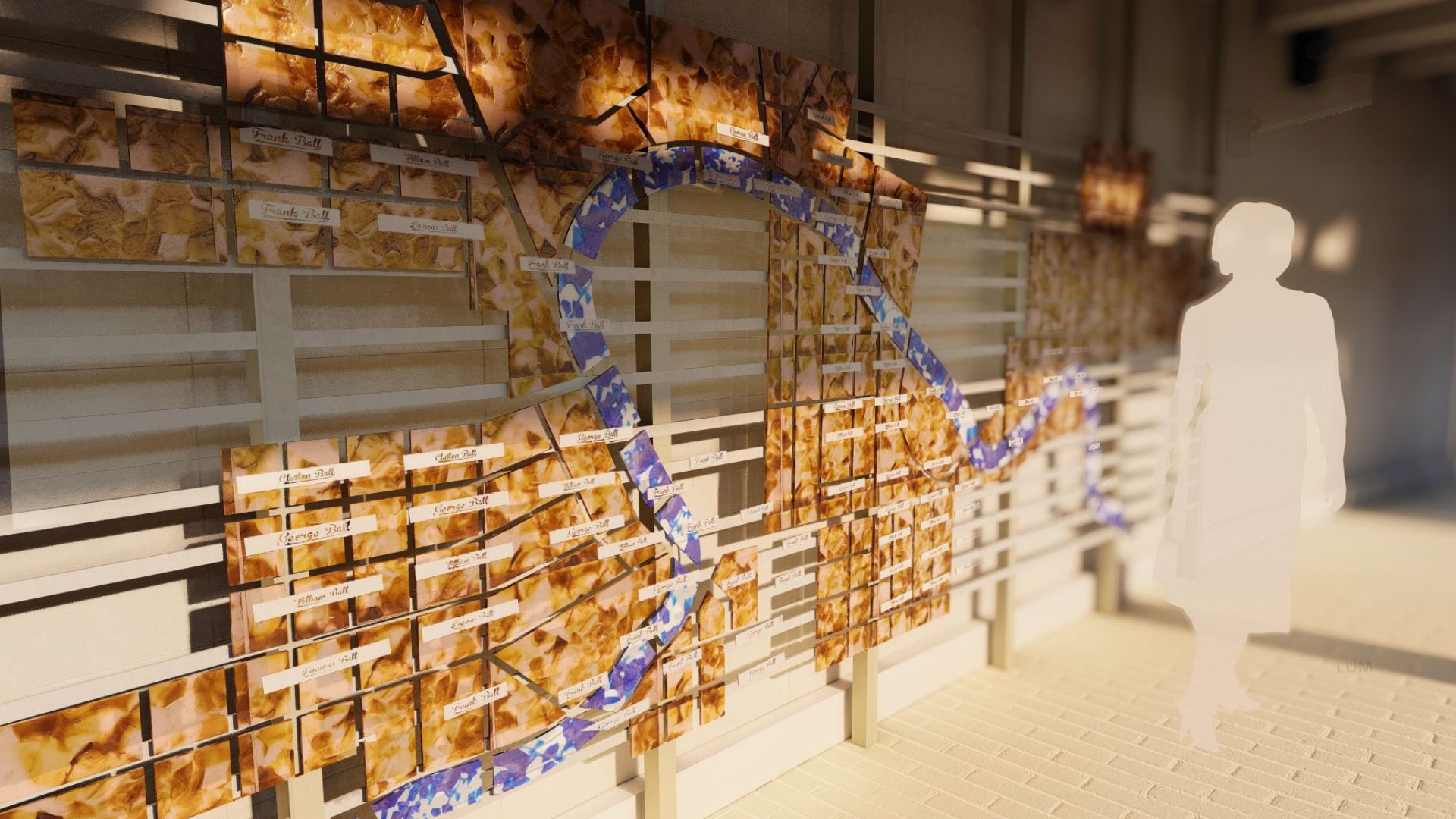
Production Process

Glass blanks are products by fusing recycled glass content into plate glass. The eddies naturally created as tinted glass flows into the clear evokes the natural movements of water. These blanks are then cut to shape using a water jet cutter, which allows for precision and ease of production.









Frank Ball

William Ball

George Ball

George Ball

Frank Ball

Louise Ball

Frank Ball

George Ball

Clifton Ball

Anton Ball

George Ball

George Ball

William Ball

William Ball

Louise Ball

Louise Ball

Frank Ball



Frank Ball

e Ball

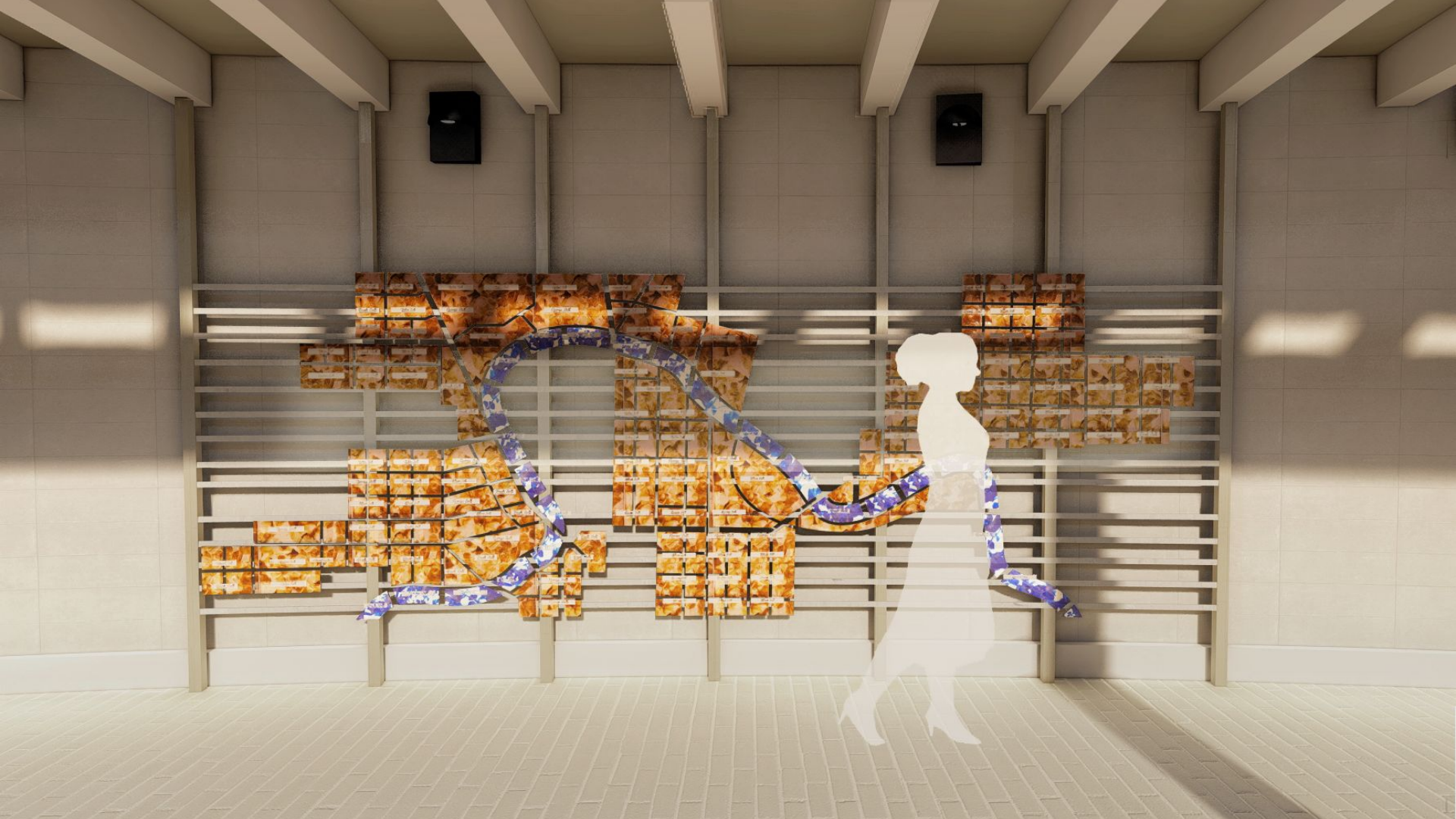
William Ball

William Ball

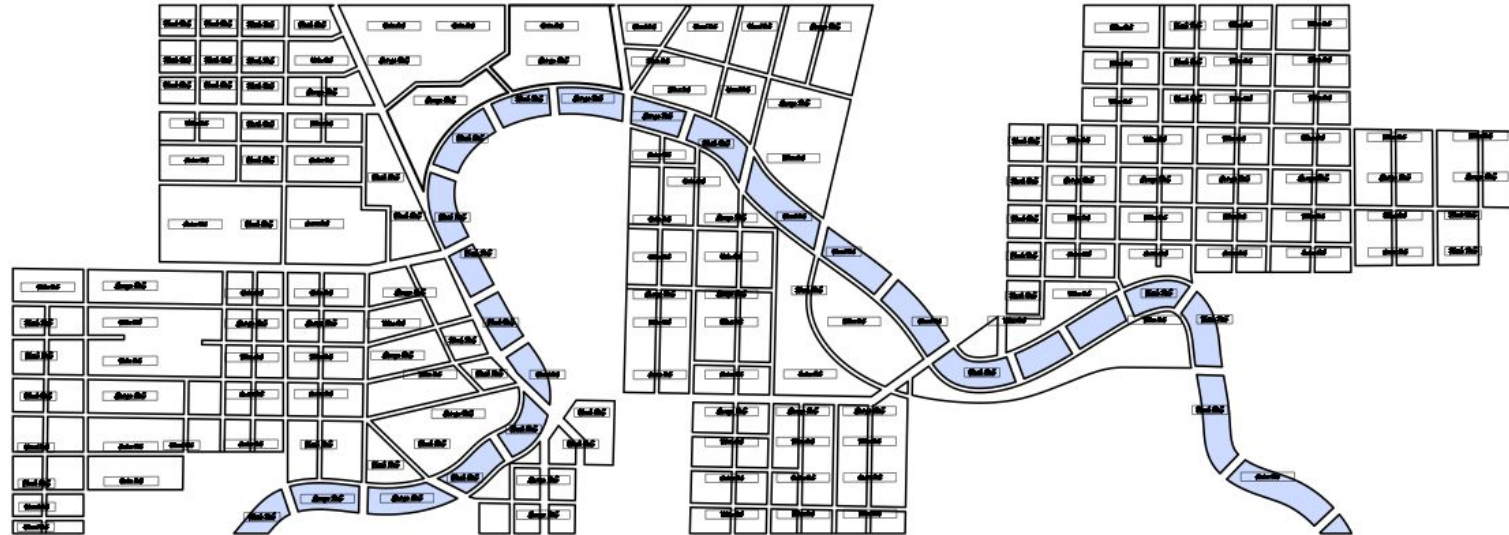
Edmond

Lucious Ball

Lucious Ball

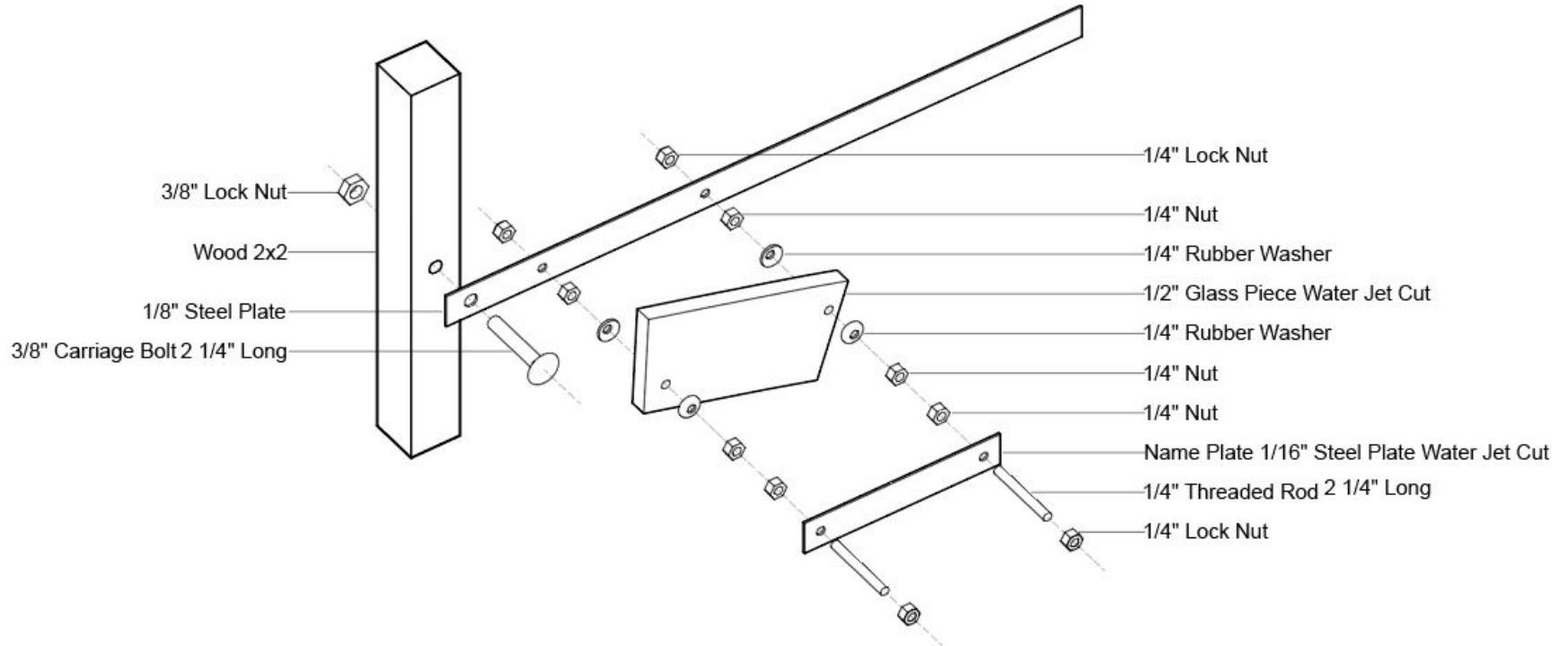






Regular Donors: 143+ Recurring Donors: 22+

Attachment Assembly



Attachment Assembly

