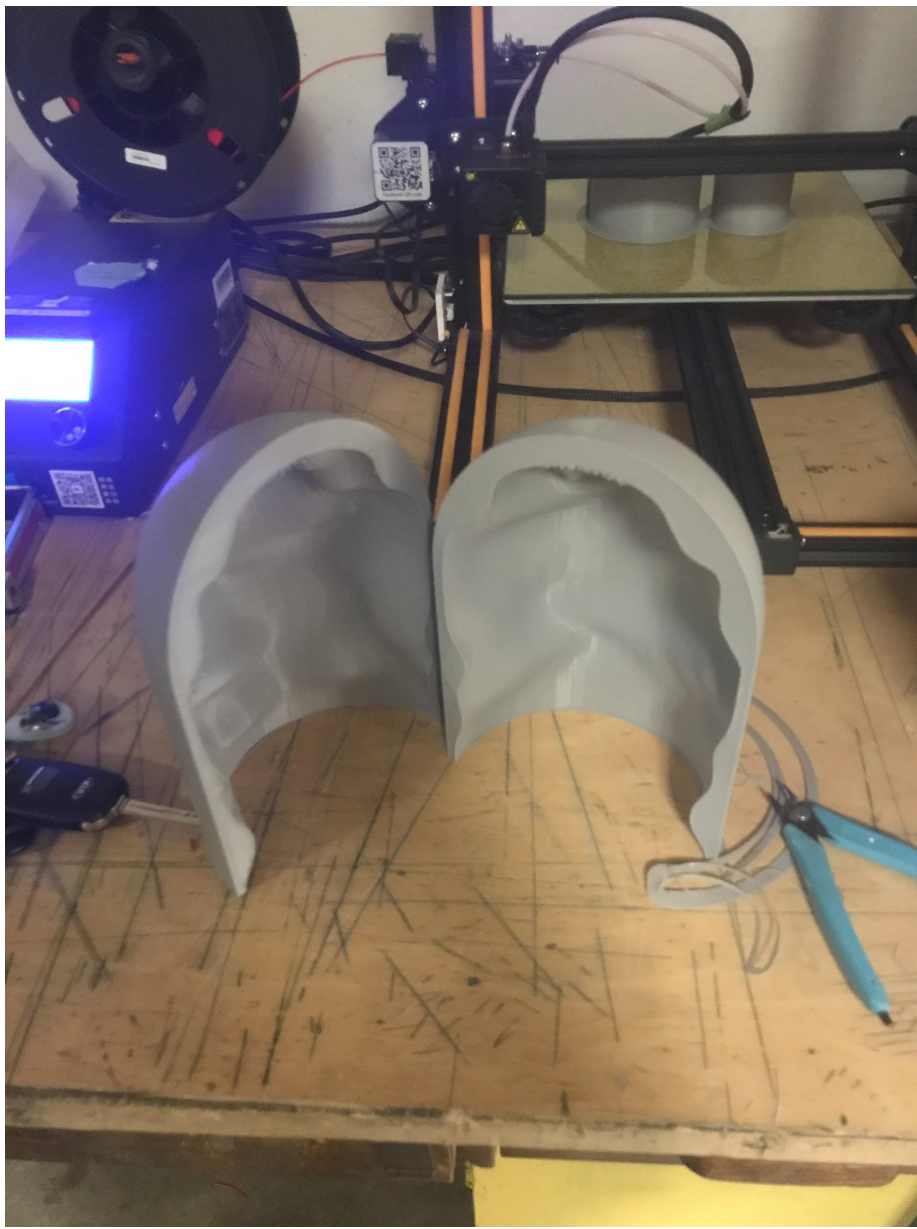


DOme

Samantha Stapleton
Casey Stamm



This 3D print represents how the final glass project is intended to be shaped. This form was then used to make plaster molds to cast the glass.



The image above demonstrates how the 3D prints were used to cast the plaster cores.

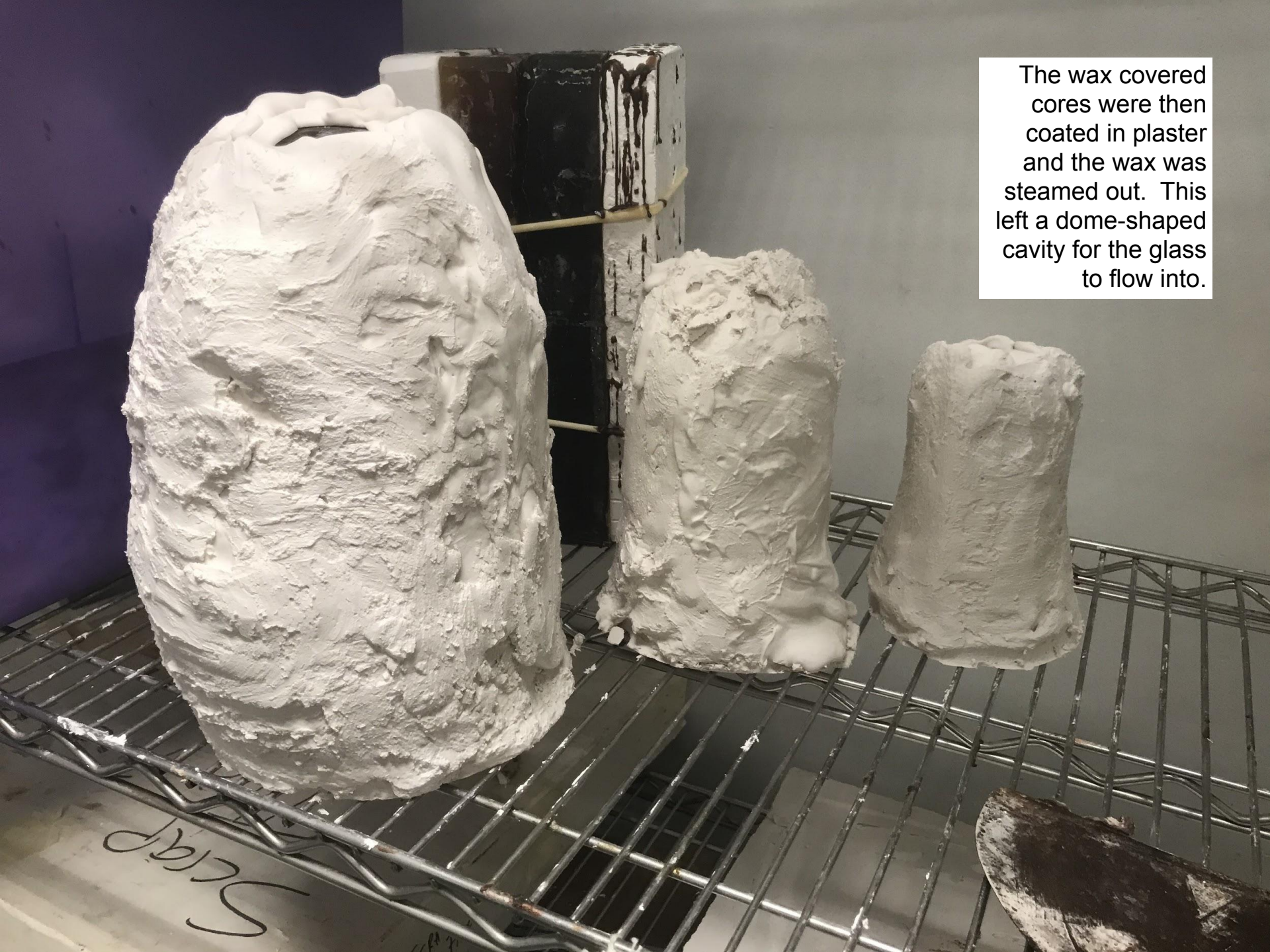


The plaster cores that were cast in the previous image.

The plaster cores were then dipped in wax until a thick coated was developed.



The wax covered cores were then coated in plaster and the wax was steamed out. This left a dome-shaped cavity for the glass to flow into.



Scrap

This image shows the glass pieces that were created using the molds in the previous image.



Medium, blue-gray
dome.

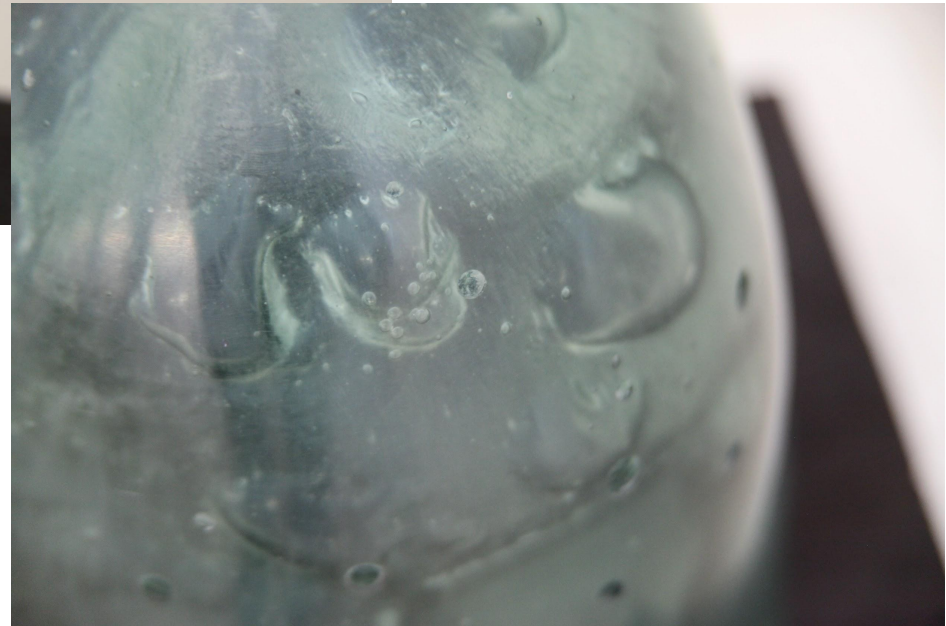


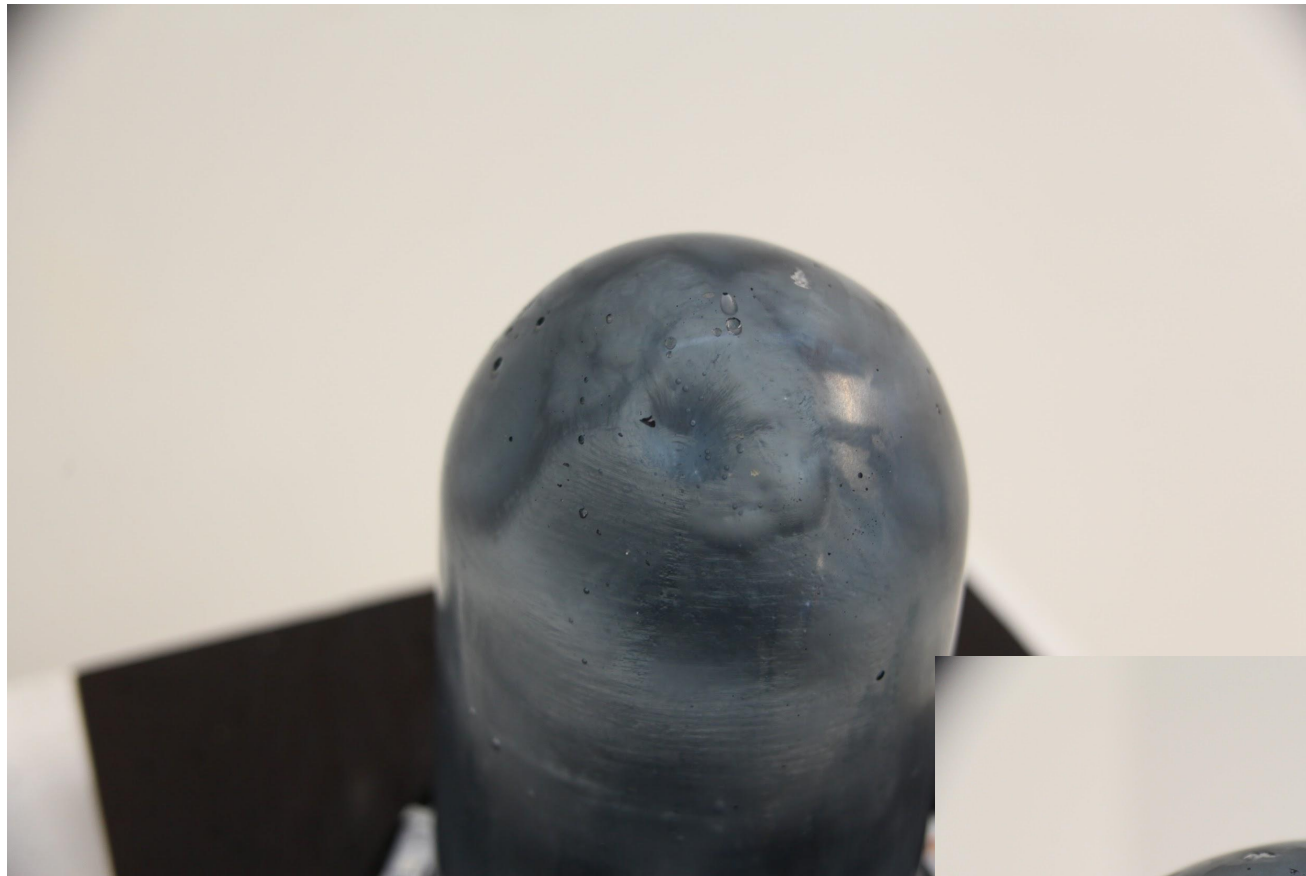
Large, sea-green
dome.

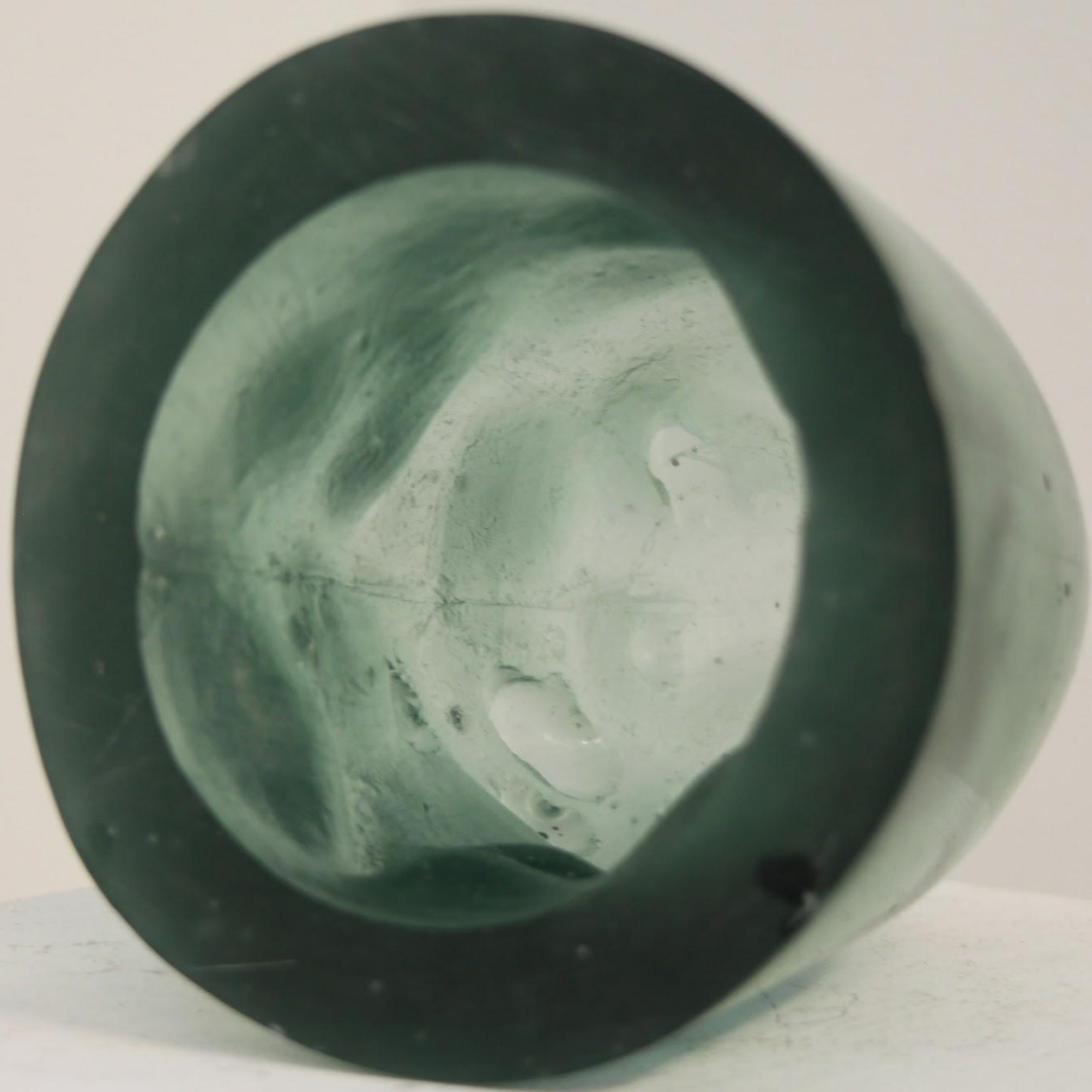


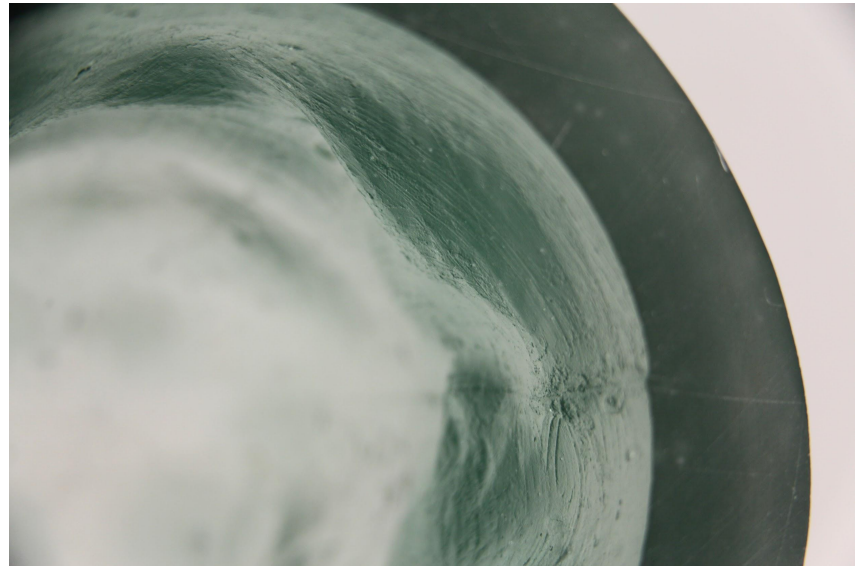
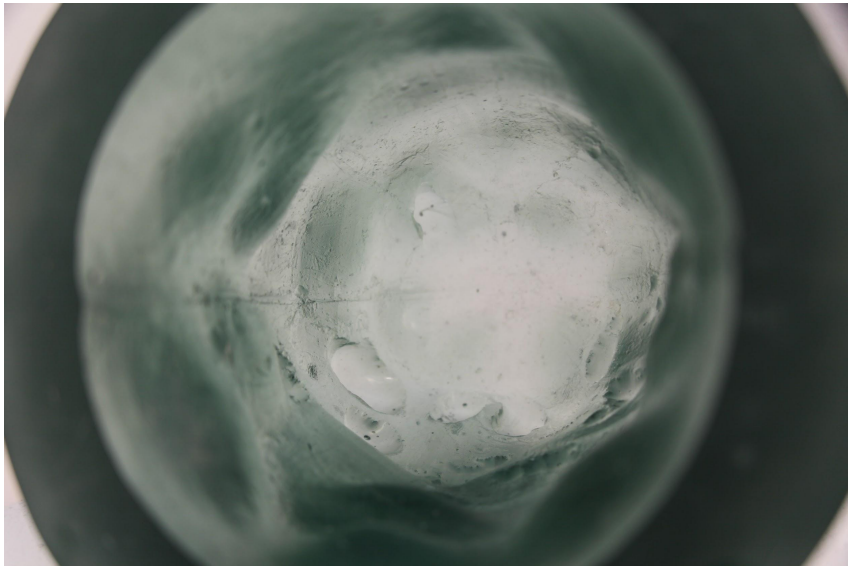
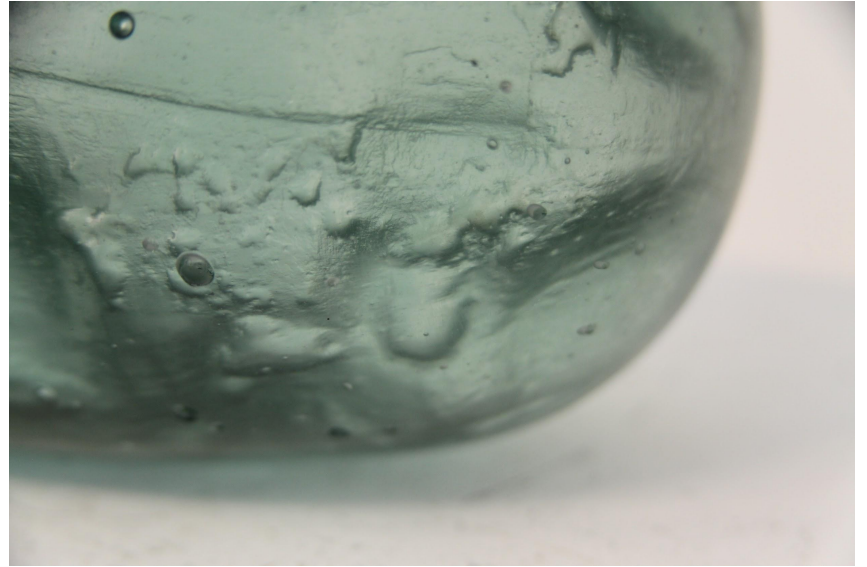
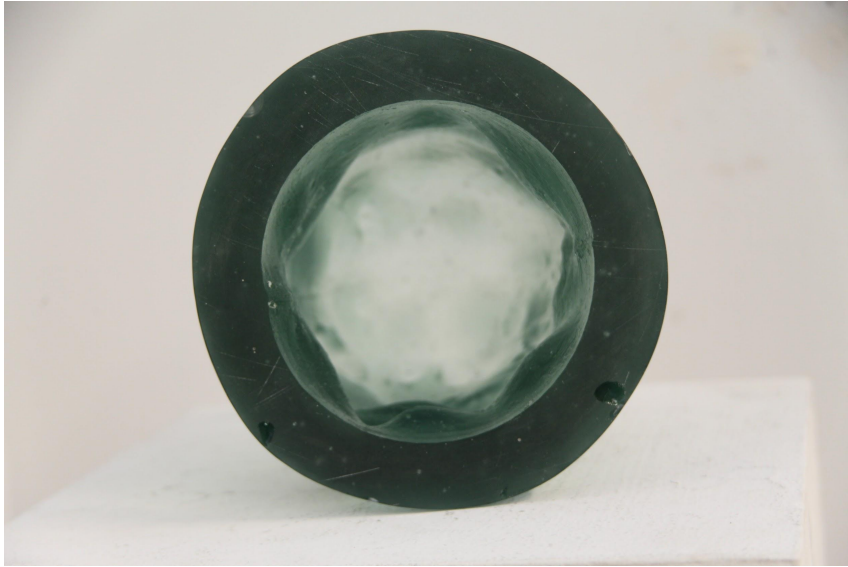
Layered domes
lighted from
underneath.



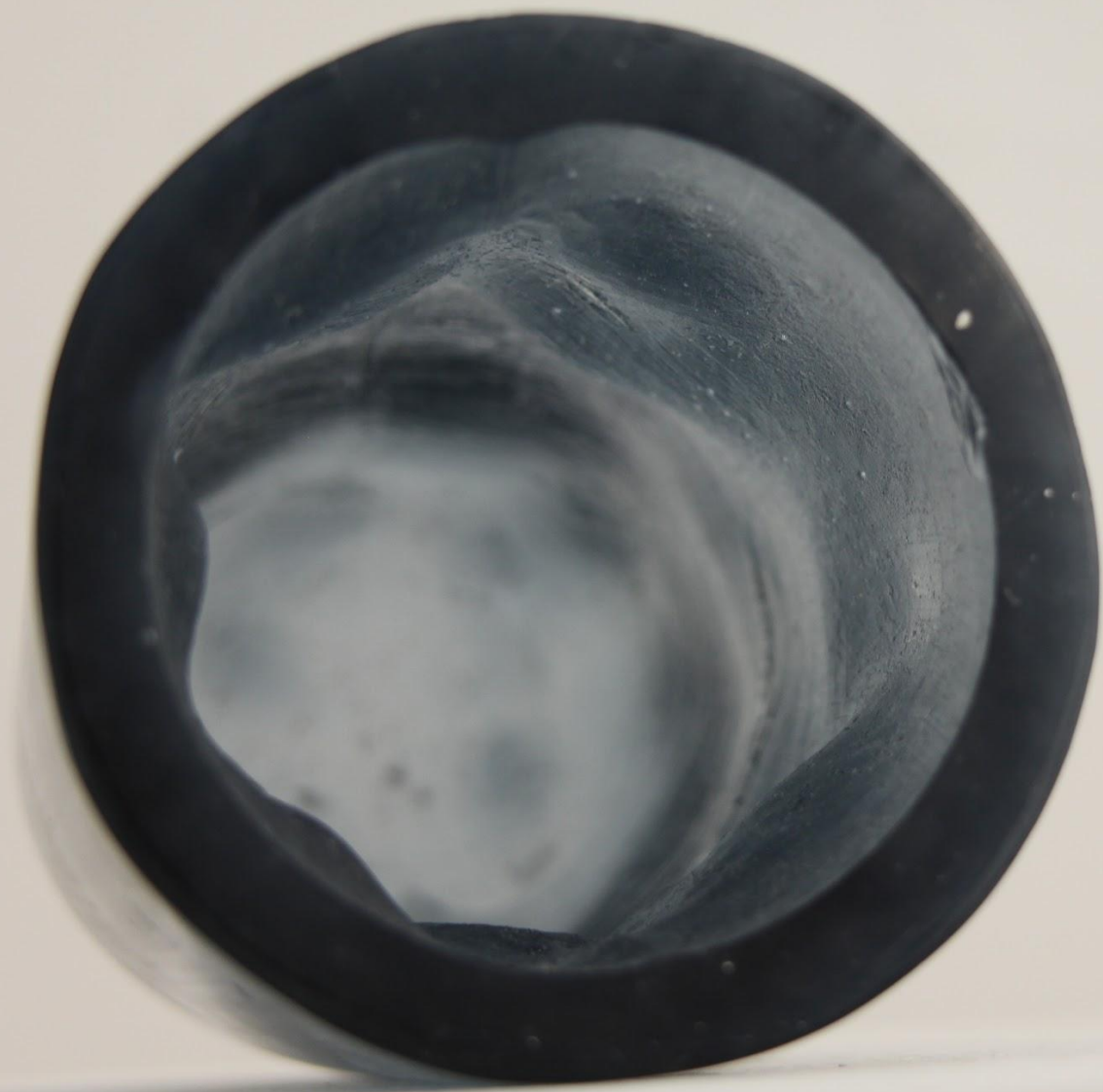


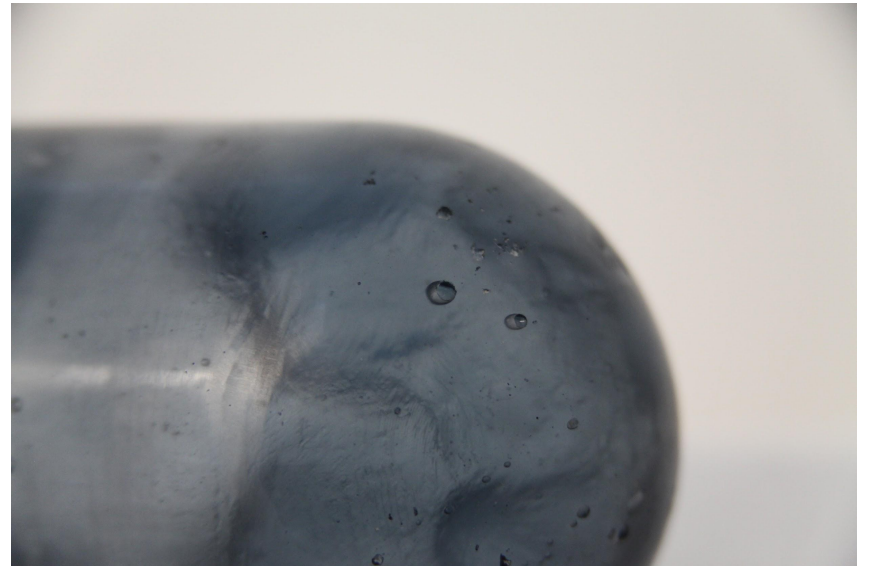
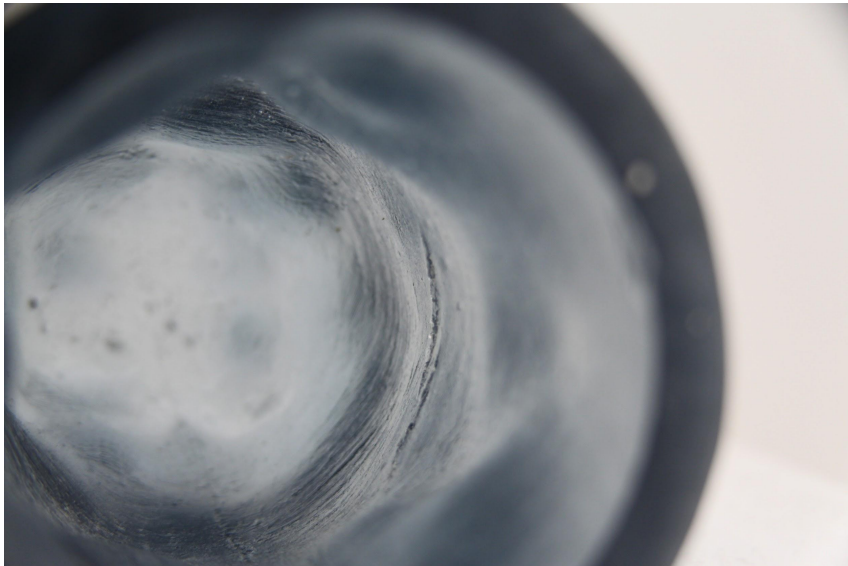




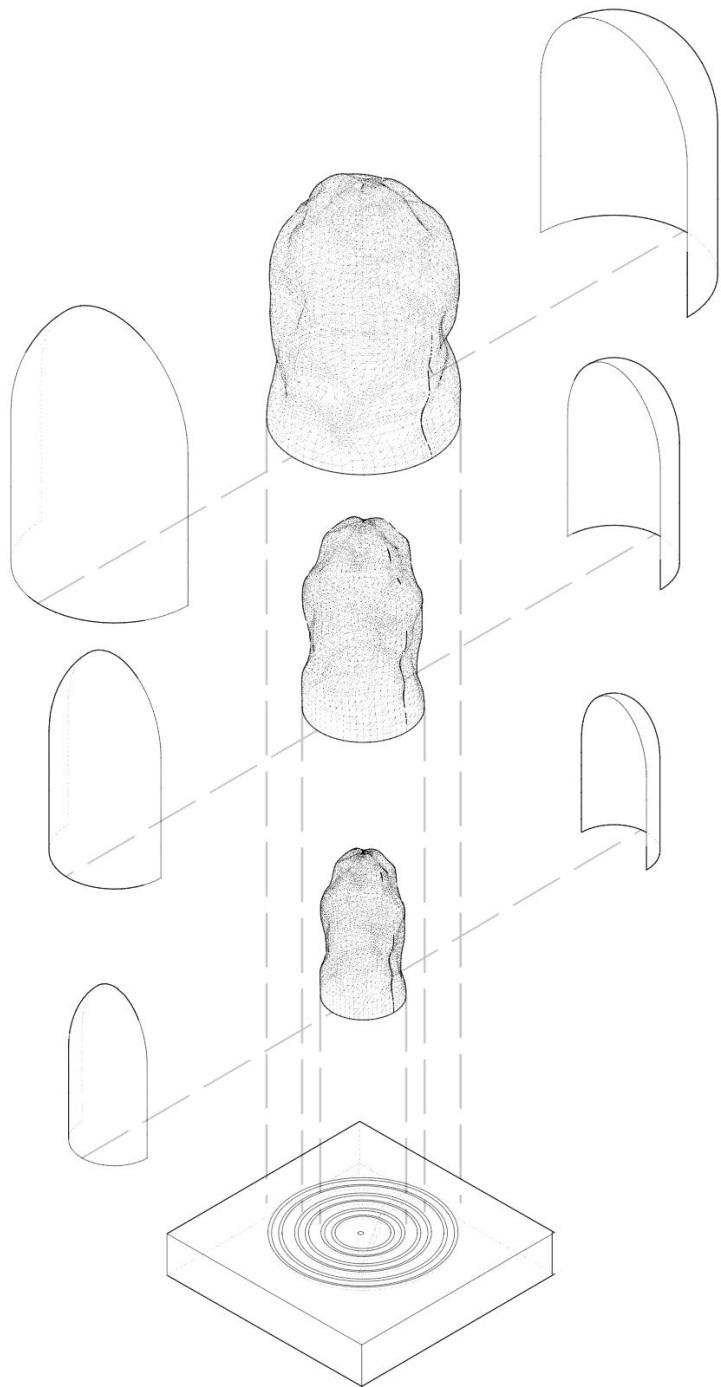














Dome can be arranged as centerpieces to give the room a calming glow.



Dome can be tipped to reveal a captivating inner surface.



Dome can be placed at the bedside to radiate calming energy.