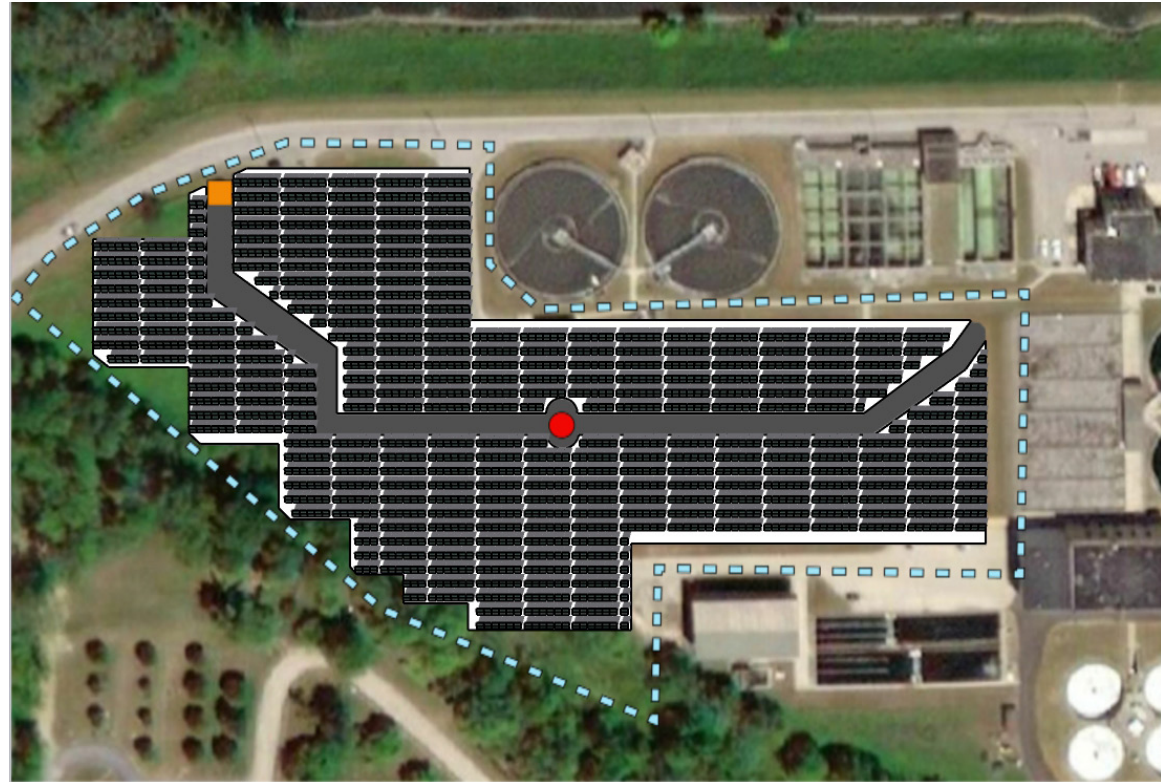


Muncie Water Treatment Plant

By: Eric Snowden

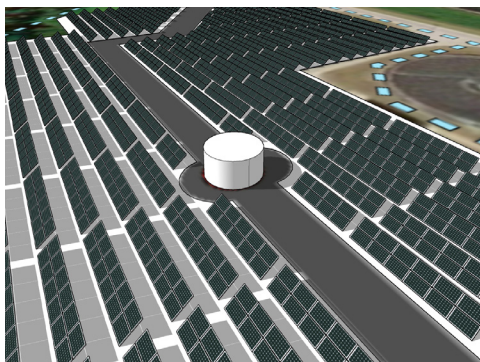
Proposal Narrative: The proposal that we have designed shows the site split into two sections (a north and a south) the two planes are split by a service road. The decision was made to place solar panels in designated locations (the white areas) so they wouldnt be too close to the fencing border. With this configuration, the solar panels within the design avoids the steep hill slope along the southern tree line and connect to the nearby substation. This Layout and design is optimized for efficiency and generation.

5150 W. Kilgore Ave.



SUNPOWER®

Solar Panel Specifics:
Commercial grade
SunPower: SP-400-WHT



Info:

Acreage:
4.40acres

Site annual energy capacity:
3,612,752 kWh/Year

Value of energy:
\$260,480

Equivalencies from PVWatts Calc.:

-288,094 gallons of gas.
-2,829,851 Pounds of coal burned.
-308 homes energy use for one year.

125' ^
N

Legend:

- : Transformer
- : Service Road Entrance
- : Site Boundaries
- : Solar Panels