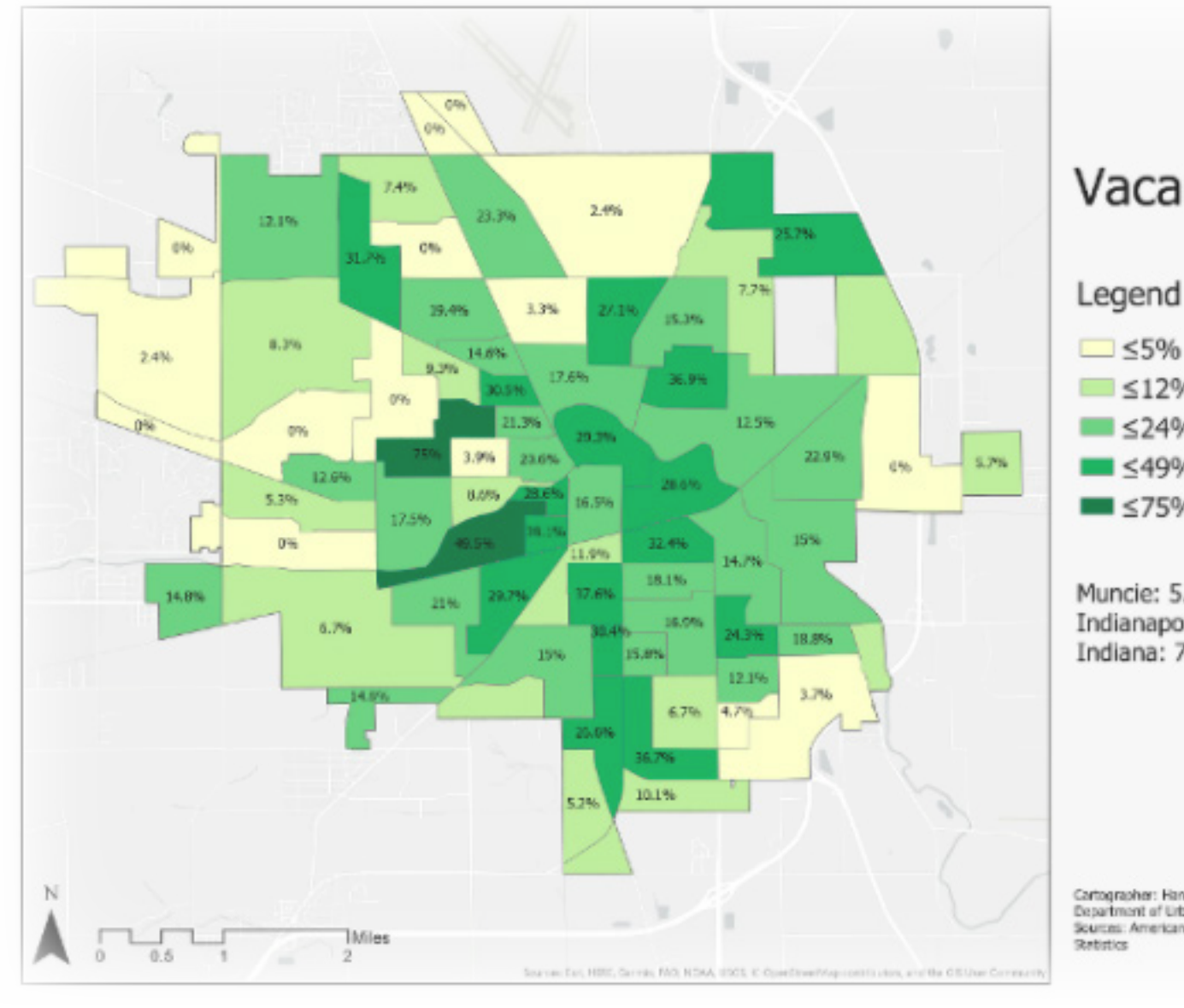
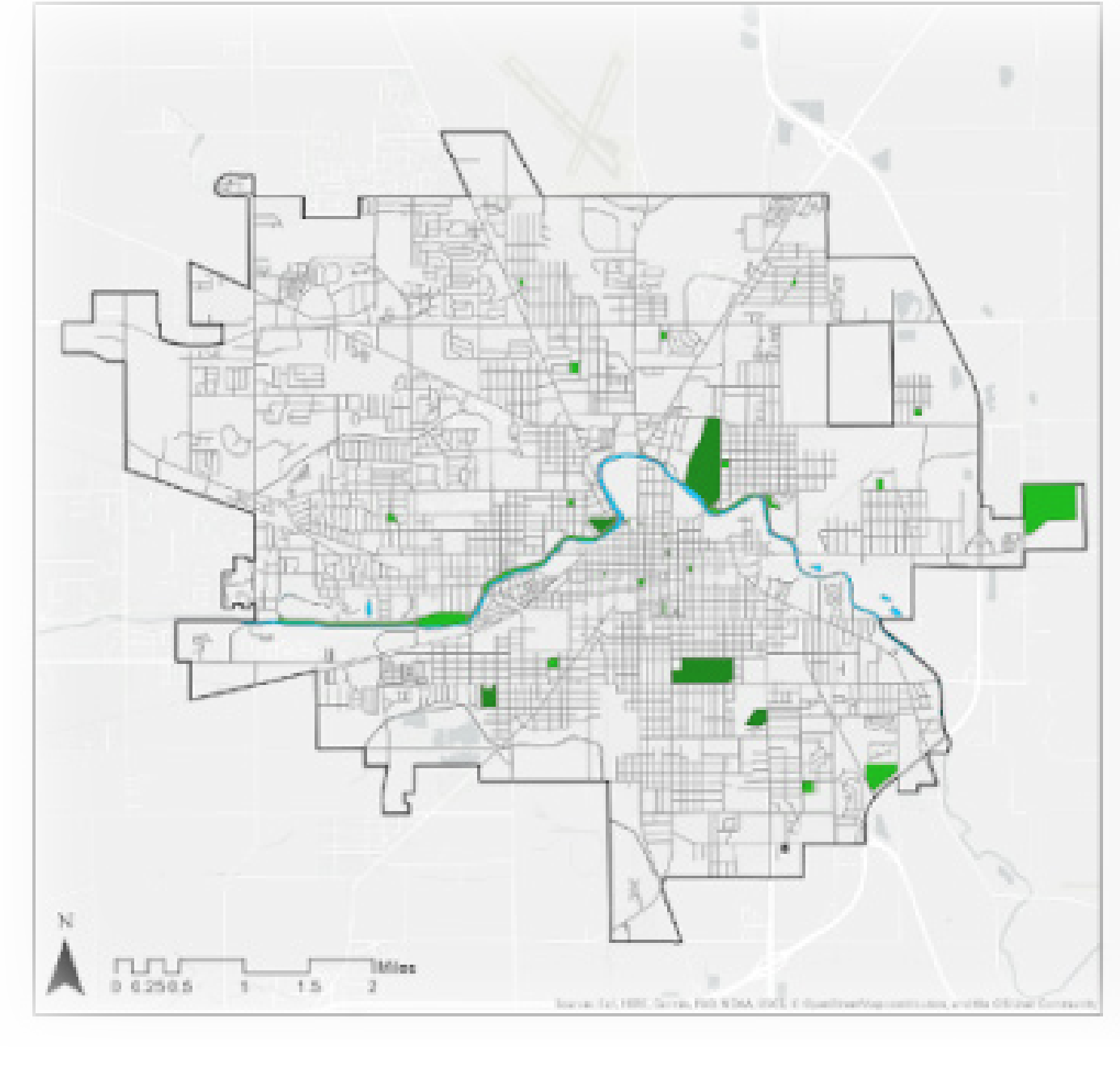


CENTER FOR NATURE ENGAGEMENT

Michael Shirley, Brittan Brady, Devin Bridget, Caitlin Osburn

The planet is in a climate induced environmental crisis accelerated by anthropogenic sources. There is a lack of environmental concern and knowledge amongst consumption motivated nations, of which contribute the most to anthropogenic global warming. In order to ensure there remains viable habitat, resources, and quality of life for future generations, current populations need to take part in more sustainable lifestyles. The issue at hand is that the public lacks knowledge on sustainable systems, ecological mechanisms, and how our actions affect the environment and the resources around us.



Along with the lack of environmental knowledge and concern, Muncie suffers from lack of quality greenspace, areas for community engagement, coordination of community programs, and has experienced a rise in vacant properties. With limited greenspaces and public community parks, there is a disconnect from nature for the Muncie Residents (see figure 1), which makes it increasingly more difficult to care about environmental efforts and living more sustainably lifestyles. Muncie has a surplus of vacant spaces and dead commercial properties (see figure 2).

The Muncie Mall is a dying space with all four anchor stores already closed. Muncie is home to about 70 thousand students and residents, and 30% of the population is living in poverty (Sustainable Muncie Project, 2020). It is obvious that muncie residents are not engaged with the mall experience and a retail space does not benefit the community. With a lack of green spaces, community engagement, and environmental awareness, there is a great need for an accessible, engaging experience that can transform the muncie mall into a community hub that educates and stresses the importance of sustainability.

We wish to propose an ecologically focused environment that models sustainable development, provides a space for community engagement, promotes education, and allows

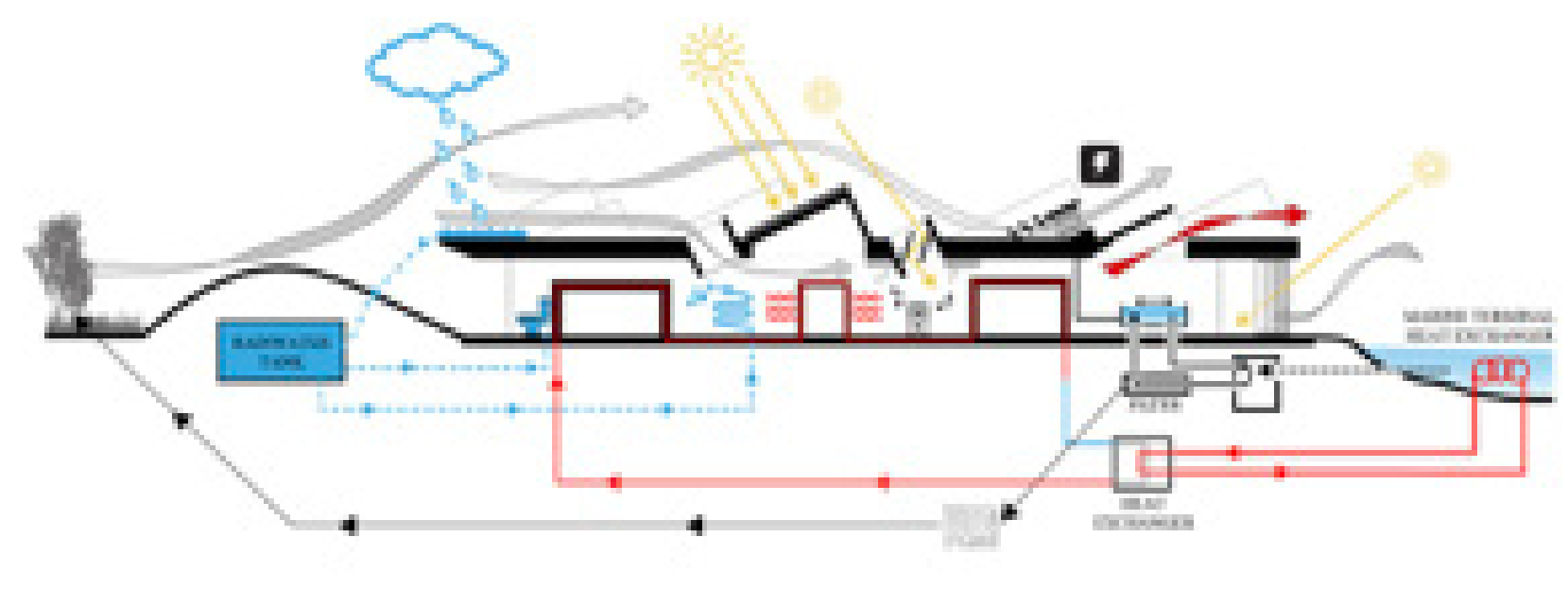
Muncie residents to reconnect with nature. Emphasizing the importance of sustainability, education, and community, we hope to create a solution that transforms the vacant anchor store of the Muncie Mall into an engaging space for interaction with nature that connects the Muncie community. We want to provide education for children and adults about the processes of the natural environment, sustainable practices, and how to live a more environmentally conscious lifestyle through an engaging, experiential environment.

We believe the Center for Nature Engagement could provide all this while offering a space of gathering and coordination for the community and creating a hub of organization for existing Muncie organizations and environmental programs.

Precedent Analysis

Malmo Marine Education Center

Under a huge roof, where landscape and building become one, visitors can learn about sustainability and people's impact on the marine life. As a beacon of sustainability, the center is integrated with energy-efficient technologies including solar panels, geothermal heat exchangers and rainwater collection systems.



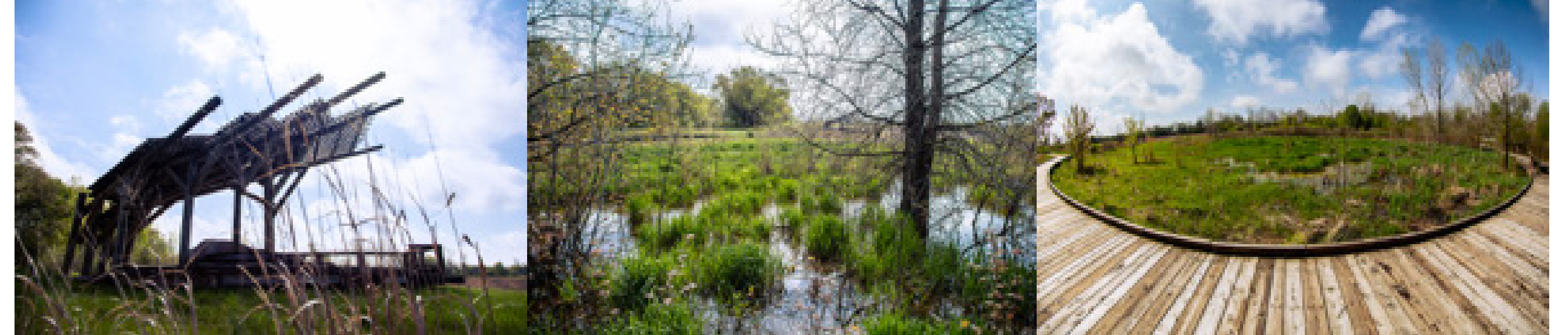
James Clarkson Environmental Discovery Center

This design had an environmental education center, then in the gardens, they created micro-ecosystems to display how wetlands, forests, ect. work in that region. Their main goal was to integrate restoration into school education. After school programs included a working laboratory, invasive plant removal classes, native plants, wetland education, and agriculture.



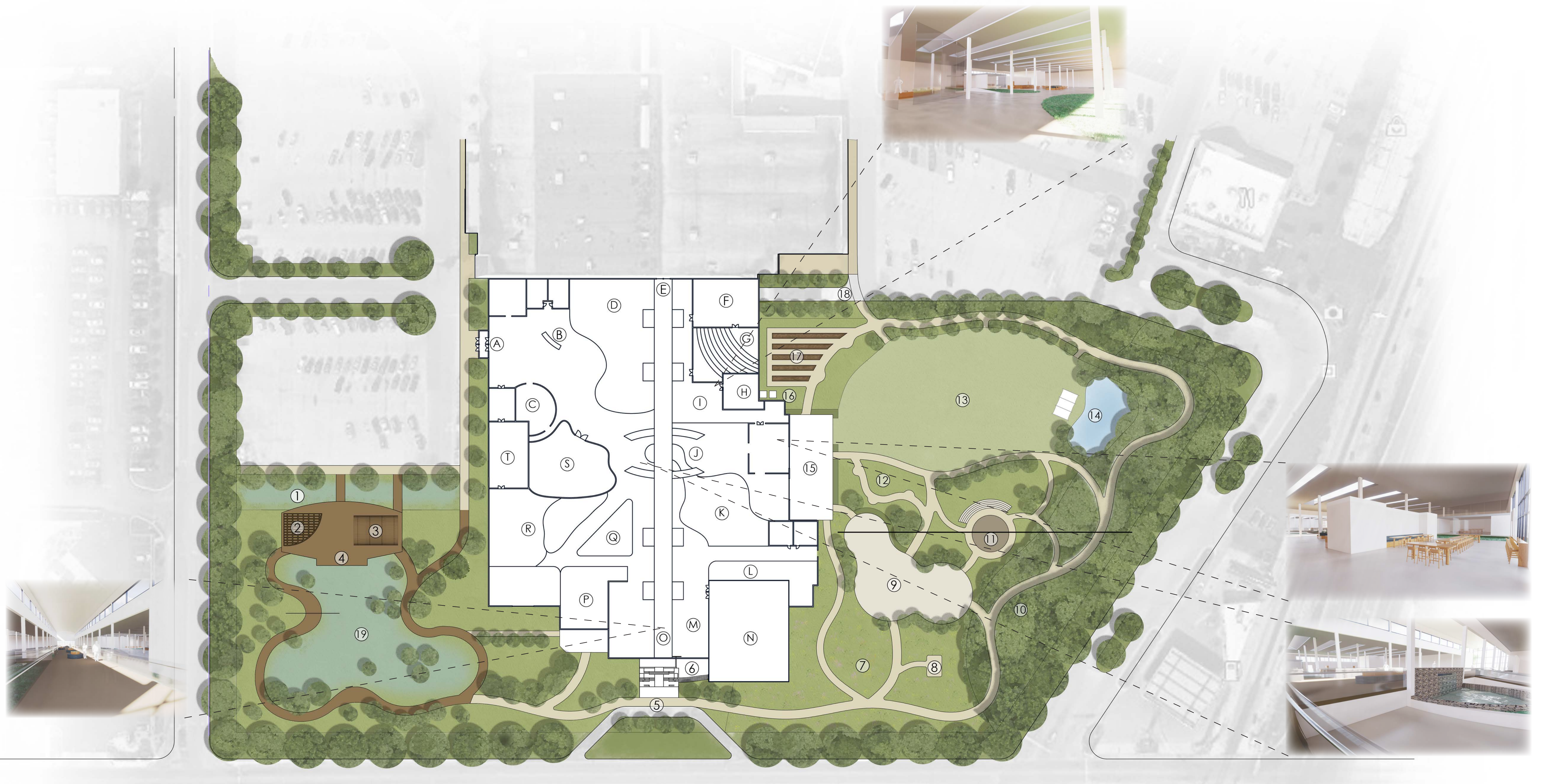
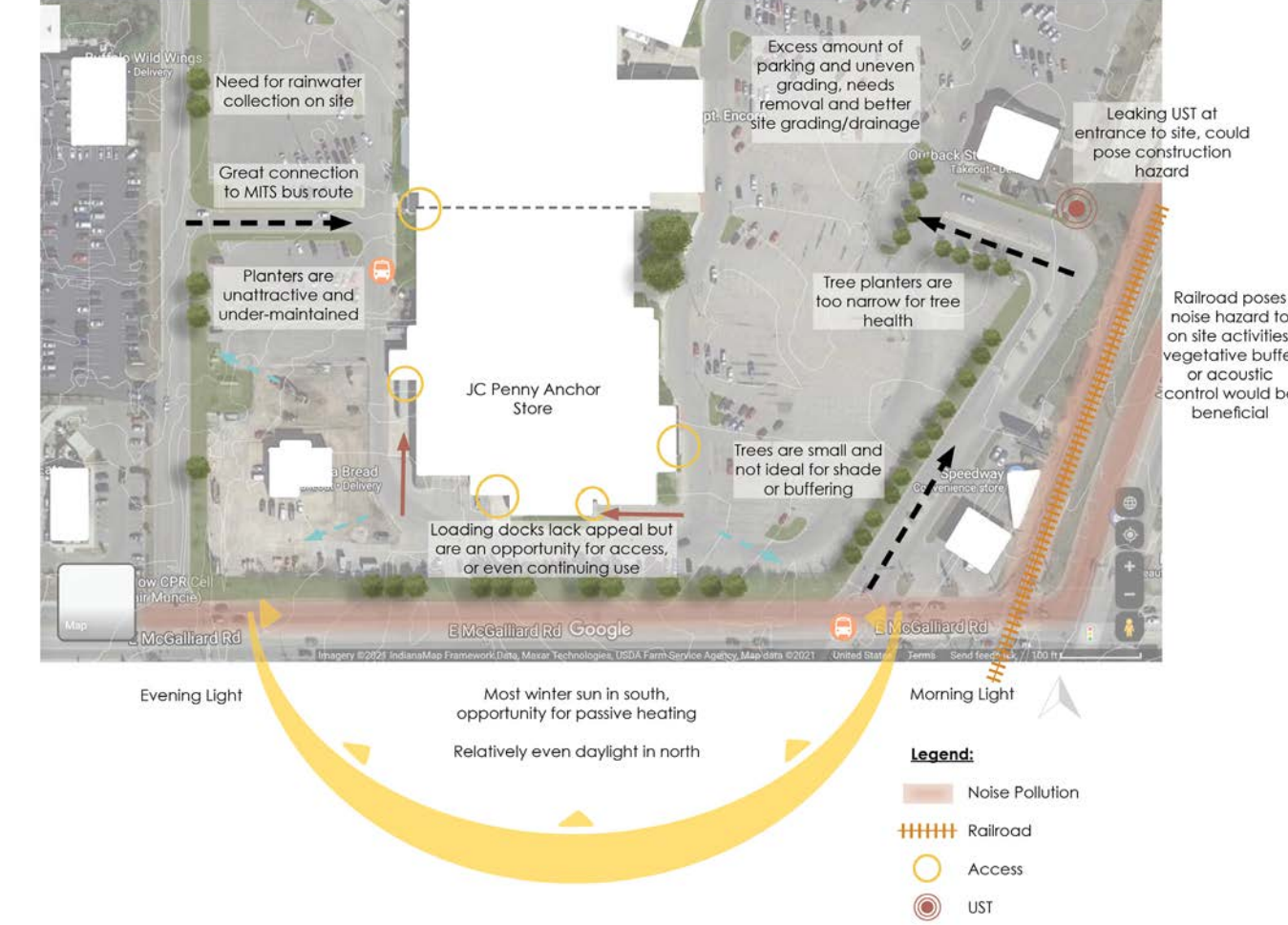
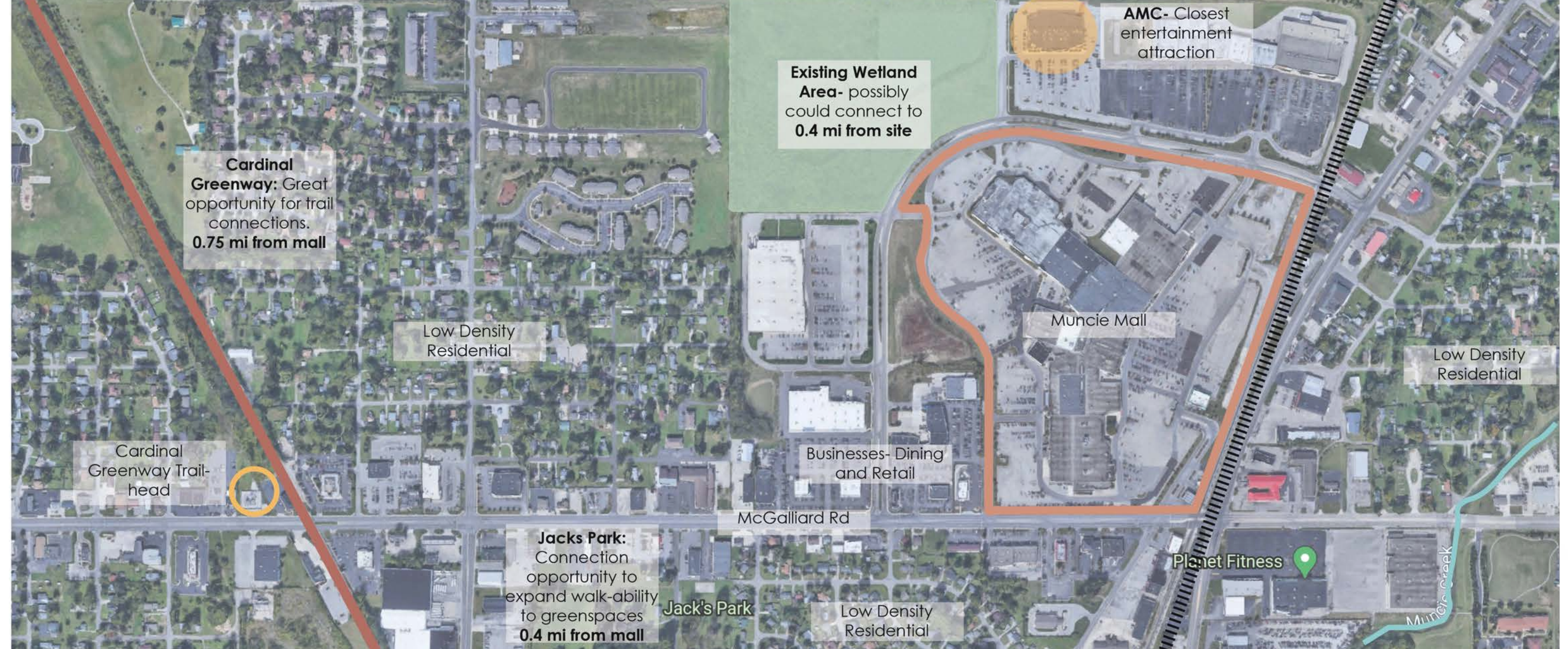
Muncie Craddock Wetlands

This is a wetland preserve near the center of Muncie has restored the wetland ecosystem present before settlement and agricultural development. The creators are dedicated to "restoration and creation of high quality wetlands throughout the state, and conserve and protect Indiana's remaining wetlands." This preserve contains 27 acres of woodland, wetland, and prairie that are traversed by an ADA compliant raised walkways, as well as contains signs to educate visitors, pavilions, and seating areas.



City Square Mall

Singapore's first eco-friendly mall, City Square Mall is an innovative mixed-use development built in conjunction with City Green Park. Envisioned as a city fringe Community Hub, CSM serves as the ideal setting for the community to meet, learn, shop, and play. Recognized for its pioneering green design, CSM features numerous sustainability features that greatly reduce the building's environmental impact.



- | | | | | | | | | |
|-------------------------|------------------------|------------------------|----------------------|---------------------------|------------------------|---------------------------|-------------------------------------|------------------------|
| Exterior Legend: | 5. Bus Drop-Off | 10. Forests of Indiana | 15. Outdoor Dining | Interior Legend: | E) Mall Entrance | J) Cafe and Water Feature | N) Conservatory and Butterfly House | R) Electricity Exhibit |
| 1. Bioswale | 6. Patio Space | 11. Amphitheater | 16. Water Collection | A) Entrance/Lobby | F) Storage/Utility | | S) Changing Exhibits | |
| 2. Pavilion | 7. Pollinator Garden | 12. Sensory Garden | 17. Edible Garden | B) Main Desk | G) Theatre Space | K) Water Exhibits | O) Raised Walkway | T) Public Labs |
| 3. Bike Share | 8. Pollinator Stations | 13. Venue Lawn | 18. Utility Drive | C) Gift Shop | H) Office Spaces | L) Wildlife Exhibit | P) Lounge | |
| 4. Overlook Seating | 9. Nature Play | 14. Pond with Pavilion | 19. Urban Wetland | D) Sustainability Exhibit | I) Agriculture Exhibit | M) Native Plants | Q) Indiana's Habitats | |

