



Children's TherAplay

The Children's TherAplay Foundation, Inc.

By: Mackenzie Park, Avery Devoe, Katelyn Roos

Parent Survey

- Overall updating
- Storage--less clutter=less distraction for kids
- Therapy & sensory room is what is most important
- Able to observe children during classes
- Updated tools/toys
- United design throughout rooms
- sanitary/cleanable materials
- Larger waiting room/front office
- Therapy rooms are too small/not private
- “Too dark”

Staff Survey

- Change paint colors
- Too crowded
- Need for more natural light
- Need new/.ore lighting
- Desire for better acoustics
- More neutral in treatment rooms
- Don't like carpet or tile due to cleaning
- Need for wayfinding

Design Workshop

Key Features to Remember:

- Donor Wall
- Graduation Tree
- Viewing Area

Therapist Entrance:

- Storage for coats, bags, etc.
- Natural material

Reception & Waiting Area:

- AVOID typical waiting room
- Wood/trusses
- Not too over the top
- Natural and inviting

Office Areas:

- Open/room to collaborate
- Same wood/warm feel

Party Area:

- Vaulted ceilings
- Wood trusses
- Cabin feel
- Possible loft?
- Hanging chandeliers

Outside Area:

- Rocking chairs
- Minimal furniture

Staff Break Room:

- Small kitchenette
- At-home feeling

Gym:

- Not typical at-home gym
- No laminate floor with some yoga mats
- Equipment provided

Benching And Mobile Workers

“Kimball Office research completed in 2011, three dominant worker profiles were identified as thriving in benching solutions.”

- Traditional workers - flexibility allows for easy interaction with teammates and co-workers. In most cases, privacy screens provide visual privacy from neighbors
- Transient workers - benching satisfies this type of worker's needs because they do not require an assigned workspace in the office, but simply a space to plug-in and accomplish work-related tasks
- Teams - teams spend about half their time working in group settings where collaboration is key and benching's flexibility and ability to reconfigure easily allows them to expand or contract without disrupting work flow



Designing the Therapeutic Space: Using Layout, Color, and Other Elements to Get Patients in the Right Frame of Mind

“Both users of the space will have different perceptions of, and needs from, the space; we must consider both users of the space, their psychological states during their occupation of the space and what cues they will take from the design of the space to inform their own behaviors, cognition, and psychological comfort

Therapeutic Space by Design

Color - light and soothing colors, such as **green** or **blue**

Seating - It is important to ensure that the seating area for therapist and service user is **non confrontational and conducive** to dialogue and supporting service user empowerment and agency in the space

Materials - People prefer natural-colored **wood** with a grain rather than surfaces without a grain.

Layouts to Avoid

Closed-in Spaces - Refrain from using “**prison-like**” spaces with hard surfaces and no windows

Clutter - Keeping the therapeutic space **tidy and neat** helps maintain a sense of **calm and orderliness**

N. D., PhD. (2018, October 19). Designing the Therapeutic Space: Using Layout, Color, and Other Elements to Get Patients in the Right Frame of Mind. Retrieved October 24, 2018, from

<https://www.psychiatryadvisor.com/practice-management/how-to-design-a-room-for-therapy-counseling/article/808972/>

Why Buildings for Autistic People Are Better for Everyone

Spatial Configuration

- Rooms that display **order and definition** are more legible to autistic individuals
- The best spaces also feature areas and pathways that are **reconfigurable** for different occupants
- Importantly, when occupants have **control** over the organization of space, they also experience greater comfort

Lighting

- Occupants exhibit greater creativity in the presence of **green and blue**, and red may undermine cognitive performance
- Autism-friendly designs generally incorporate unsaturated, light earth tones with only small contained areas of bright color

Materials

- Because of the importance of these dimensions for people with ASD, **movable furniture** is better than built-in furniture. This is especially true when it can reinforce the social use of space by groups or individuals
- Furnishings, carpet and wall finishes also introduce **chemicals into spaces** that may jeopardize the health of future parents

Stuart Shell. (n.d.). Why Buildings for Autistic People are Better for Everyone. Retrieved October 24, 2018, from <https://network.aia.org/HigherLogic/System/DownloadDocumentFile.ashx?DocumentFileKey=3fff74f0-6418-8e5f-00ed-4ebeb38eabd8&forceDialog=0>

Evidence-Based Design in Practice

Goal

- Promote staff connection and collaboration
- Increase efficiency
- Enhance patient experience

Solution

- Flexible work areas adjacent to exam rooms
- Allow for more time for patient care



Goal

- Collaboration
- Cutting Edge
- Efficiency

Solution

- Integration of artwork in the design of circulation
- Provide a positive distraction
- Memorable mapping
- Give patients and families a sense of control

EBD STEPS APPLIED:

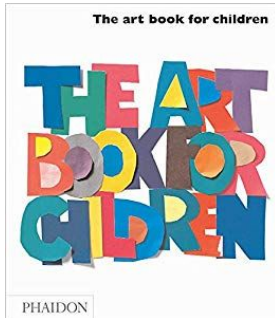
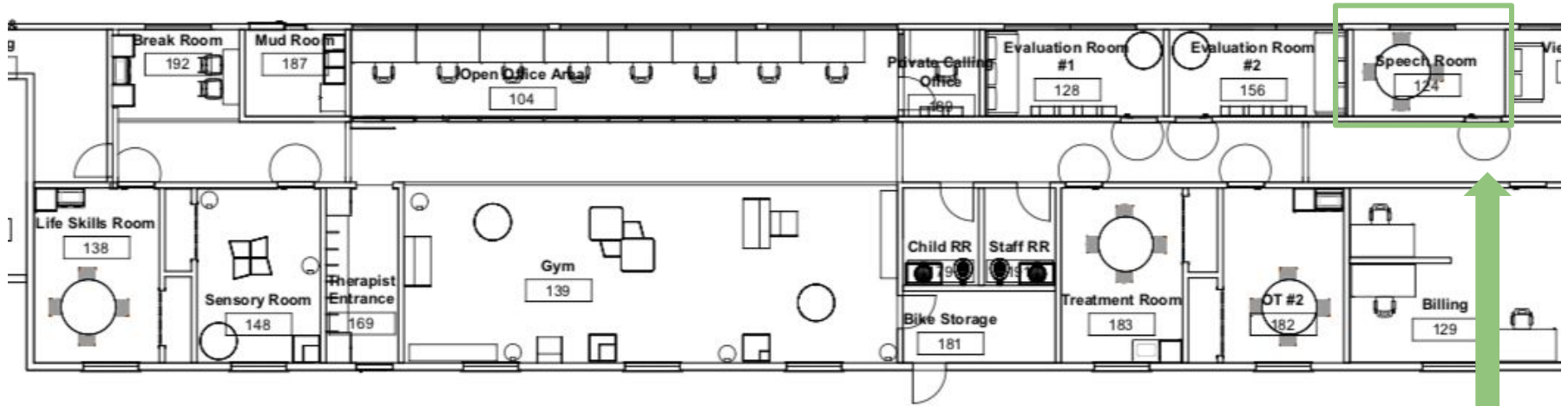


EBD STEPS APPLIED:



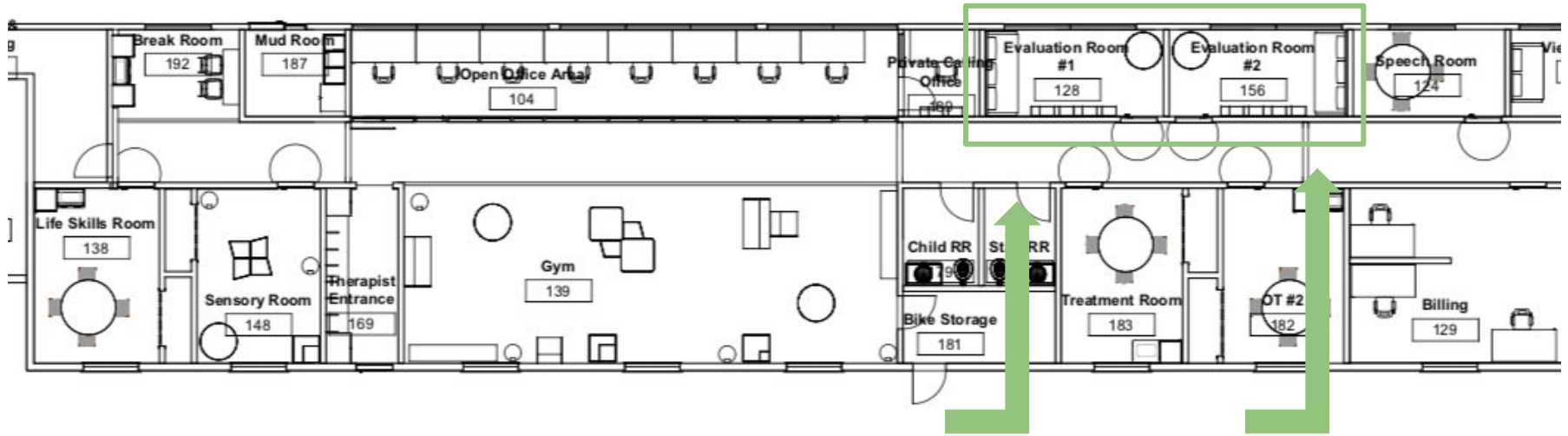
Patino, E., & M. (n.d.). What You Need to Know About Speech Therapy. Retrieved from <https://www.understood.org/en/learning-attention-issues/treatments-approaches/therapies/what-you-need-to-know-about-speech-therapy>

Case Studies

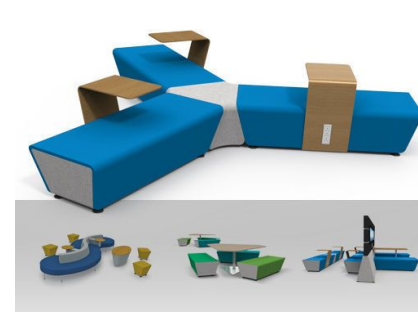


Activities to build skills: pictures/books, play-based therapy, language practicing drills, practice creating sounds (lip/jaw exercises)

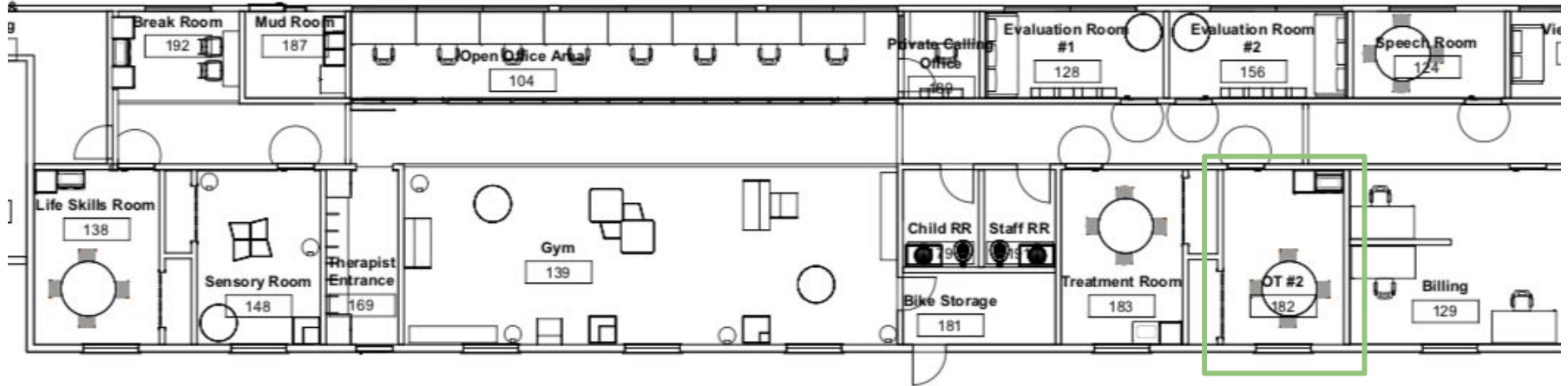
Case Studies



- Design for Engagement at all Levels
- Keep Families in Mind
- Integrate Flexible Spaces
- Consider Efficiency, Safety and Security



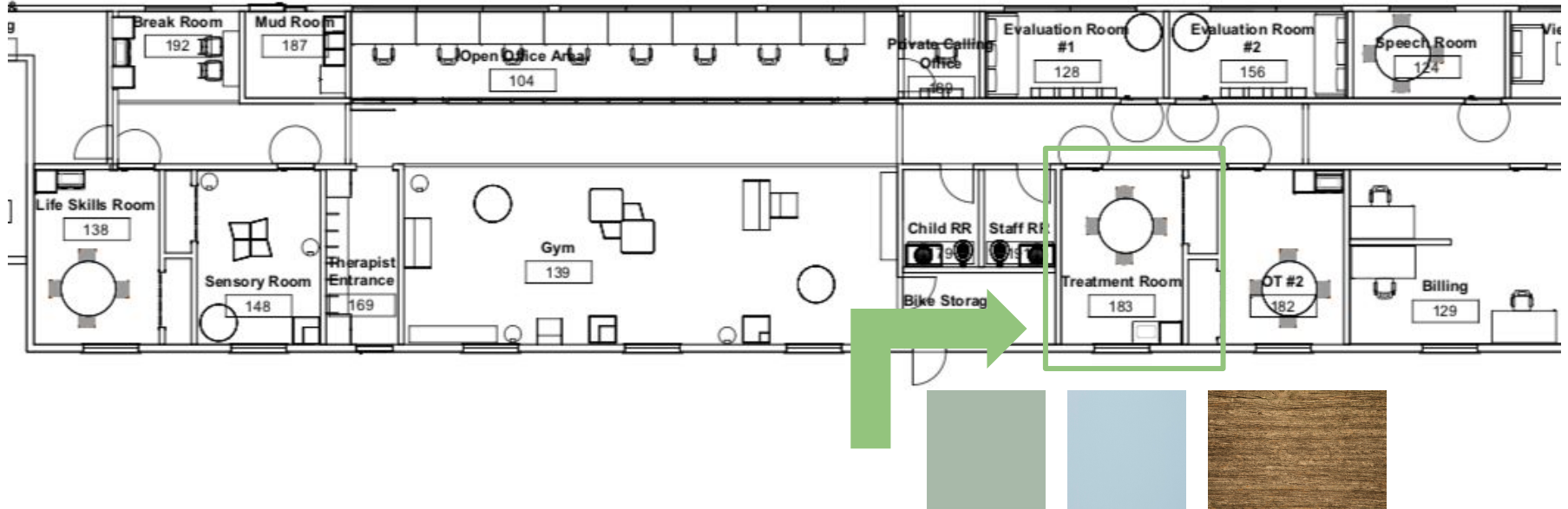
Case Studies



Provide a unique interactive space which offers the user a range of tactile, visual, scented, and interactive activities to engage with. Many can be easily graded to provide appropriate activities for a range of sensory, cognitive, fine motor and gross motor skill levels.

DeAngelis, T. (2017, March). Healing by Design.
Retrieved from
<https://www.apa.org/monitor/2017/03/healing-design.aspx>

Case Studies

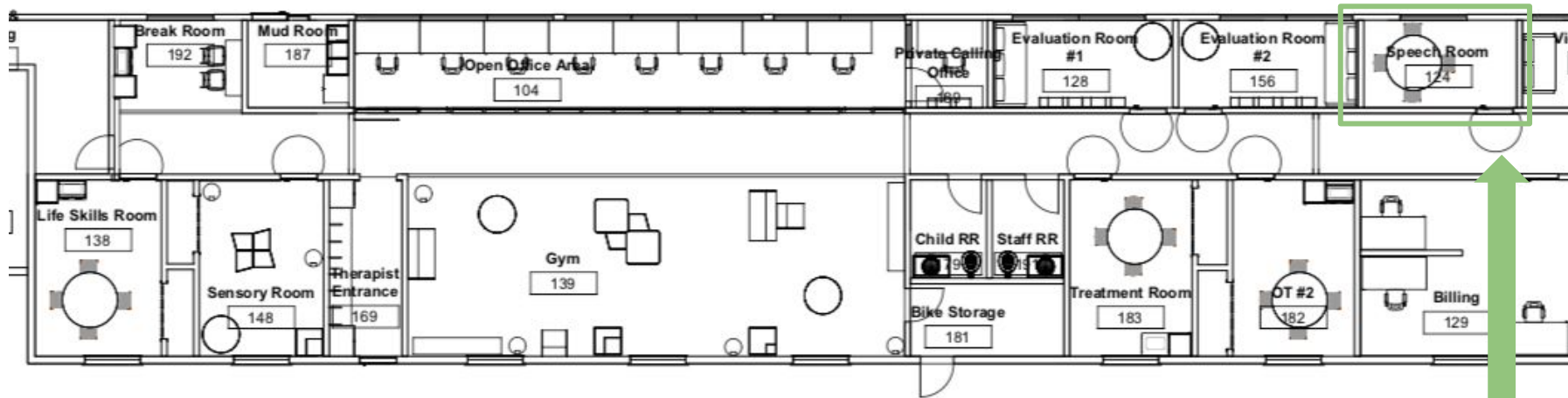


- The color of the office walls sets a tone. Wall colors in light, soothing colors like sage green or dusty blue promote a sense of calm and relaxation, environmental designers say
- People prefer natural-colored wood with a grain rather than non grain surfaces, research finds. People also feel more comfortable with wood than with slicker options like glass and chrome
- If your office lacks windows, use floor and table lamps with soft lighting rather than overhead fluorescent lighting to promote a feeling of comfort and coziness, says Gum. Some light bulbs even simulate natural light, which can boost the positive ambience of windowless offices.

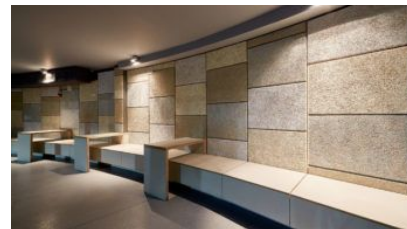
Case Studies

<https://www.acousticalsurfaces.com/acousticore-micro-perforated-acoustical-panels/>

Niemann, J. (2018, May 08). How to soundproof an office for speech privacy. Retrieved from <https://acousticalsolutions.com/soundproof-office-speech-privacy/>



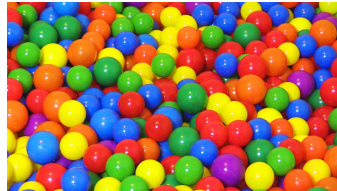
Envirocoustic Wood Wool



- Keeping sensitive information and conversations private requires a construction assembly intentionally designed to block sound from one space to another.
- Health issues should be between only the patient and their health care professional, not overheard by the patient in the next room.

3 Great Benefits of a Sensory Gym. (2017, February 16). Retrieved from <http://www.thectcenter.com/sensory-processing/3-great-benefits-sensory-gym/>

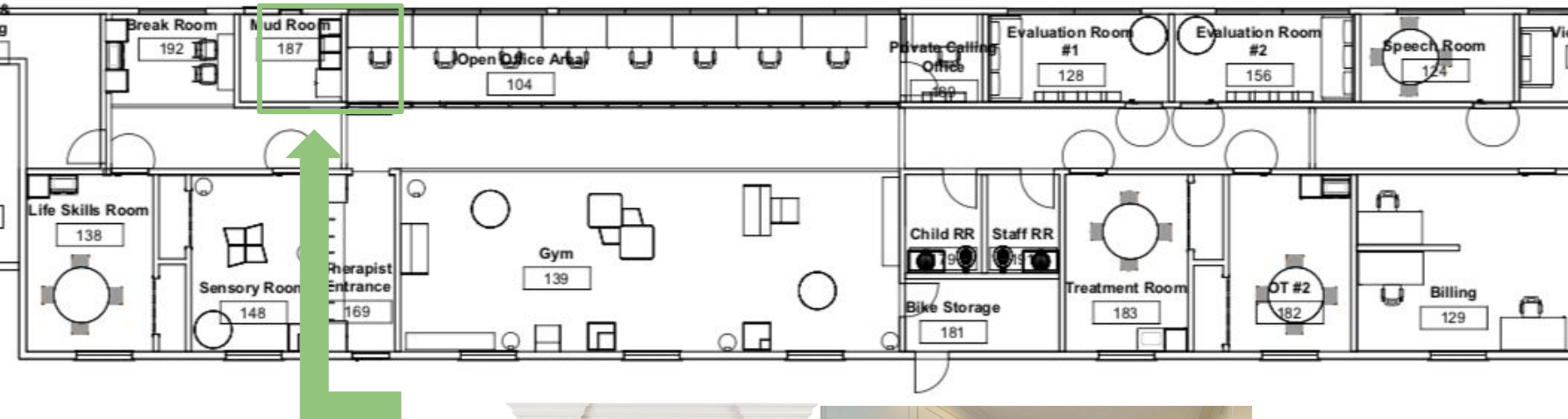
Case Studies



- Sensory gyms are a great way to foster independence, reduce social stress, and help acclimate your child to new stimuli safely. A therapist can work with your child to help them properly respond to a variety of fun stimuli in the sensory gym including swings, ball pits, bubble fans, and tunnels. Over time, your child will adjust to these sensations and have increased confidence in and out of the sensory gym. Sensory gyms have been proven to help with fine motor skills, body and spatial awareness, cause-and-effect reasoning, and an increase in social skills.

Case Studies

Team, D. (n.d.). From the Floor Up.
Retrieved from
<http://blogs.daltile.com/surfaces-for-the-mudroom-you-can-clean-in-2-minutes>

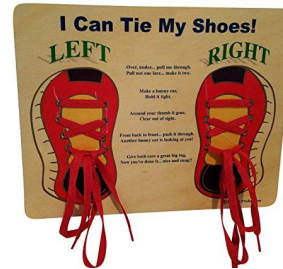


- A variety of styles to choose from so the mudroom can have some style alongside the functionality. Opt for tile that looks like wood, brick, stone, cement, and even fabrics.
- You might want to consider tile that allows you to have a minimal grout joint so you don't have to worry too much about the upkeep of the grout, which is probably the most labor intensive part of having tile.



Case Studies

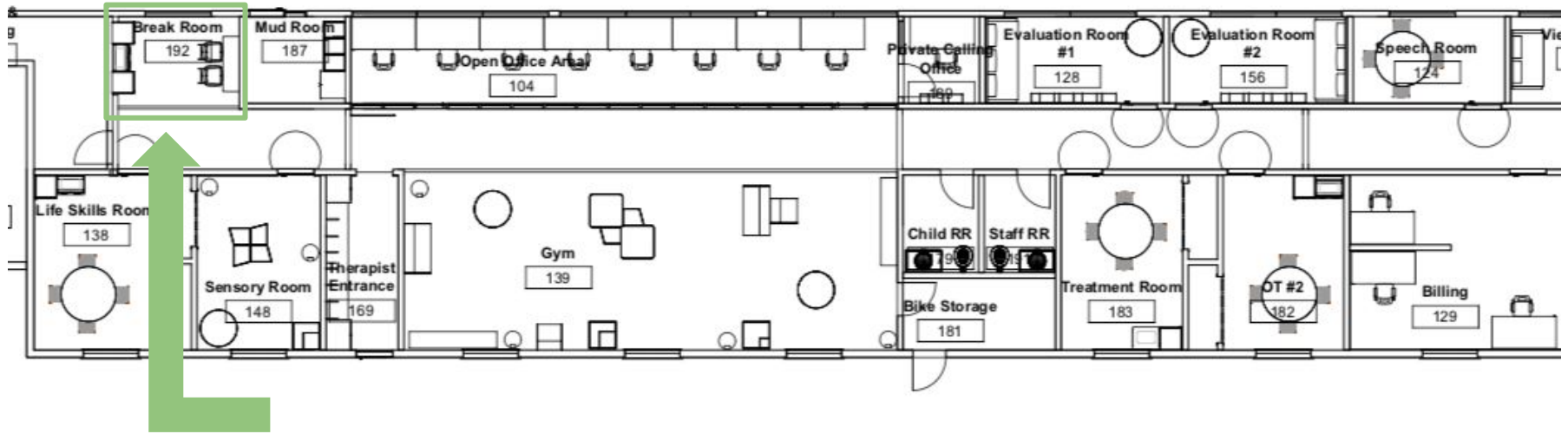
Snoezelen and Occupational Therapy.
(n.d.). Retrieved from
<https://www.snoezelen.info/who-can-benefit/snoezelen-for-occupational-therapists/>



- Clinicians can use this equipment to conduct non-standardized assessments of the clients' ability to engage or use these activities, identifying need and to determine suitable interventions.

Pilon, A. (2016, November 13). 10 Tips for Creating the Ultimate Break Room for Your Employees. Retrieved from <https://smallbiztrends.com/2016/11/employee-break-room-ideas.html>

Case Studies



- Provide Caffeine and Snacks
- Offer a Space for Conversations
- Create a Relaxing Atmosphere
- Close Off the Space from the Office
- Offer Some Activities
- Personalize the Space
- Encourage Actual Breaks
- Keep it Updated

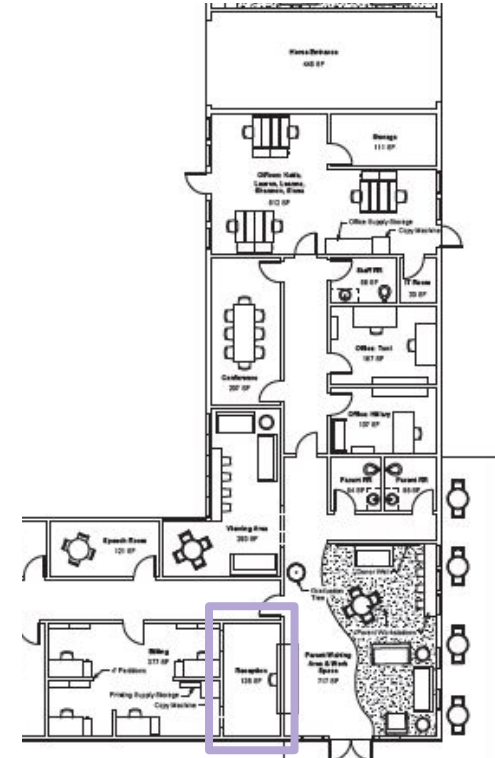


Reception

- Area to welcome staff and visitors
- 2 separate heights to accommodate those in wheelchairs
 - One end standing, one sitting
- Efficient workflow
- Close to printers
- Keep in theme with brand

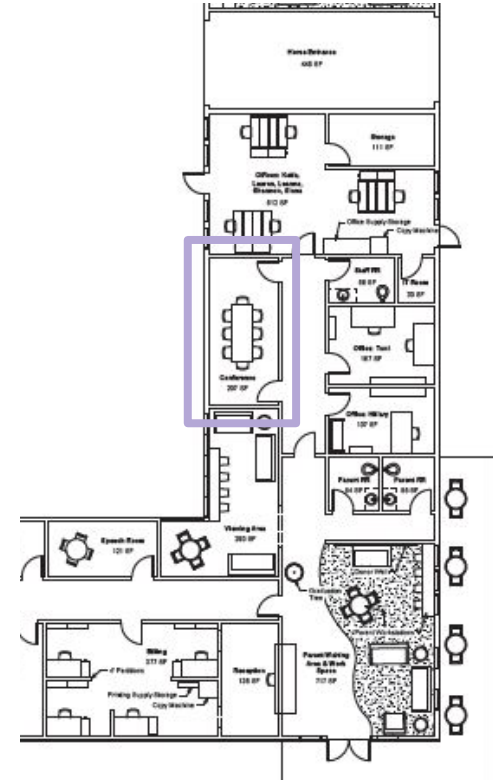


https://edin.se/wp-content/uploads/2016/07/CaseStudy_Ho useofDisabledPeopleOrg-CPH_131217.pdf
<https://blog.marconet.com/blog/case-study-why-printer-loc ation-matters-for-efficiency-and-workflow>



Conference Room

- Provide circulation space
- Make sure all chairs can view what's being displayed
- Don't provide more chairs than needed
- Apply integrated principles for design



Evidence Based Design - Furniture

- Provide seating with direct sight lines to information sources
- Room to store personal items
- No rows of seating – private or communal
- Balance sight lines
- Rethink density
- Create both separation and togetherness
- Lounge seating with wider seats and armrests
- Double seats
- Café table
- Plug in seating bays
- Tables with space dividers for additional privacy



Evidence Based Design - Color

Patient

- Color influences us psychologically and physiologically
- Our subconscious in some cases it might also be triggered by a former personal experience
- Color vision is always dependant on the three suppositions that there is light that the person's eye has the ability to see color, and that the person's brain has the ability to process the color stimulates from the eye

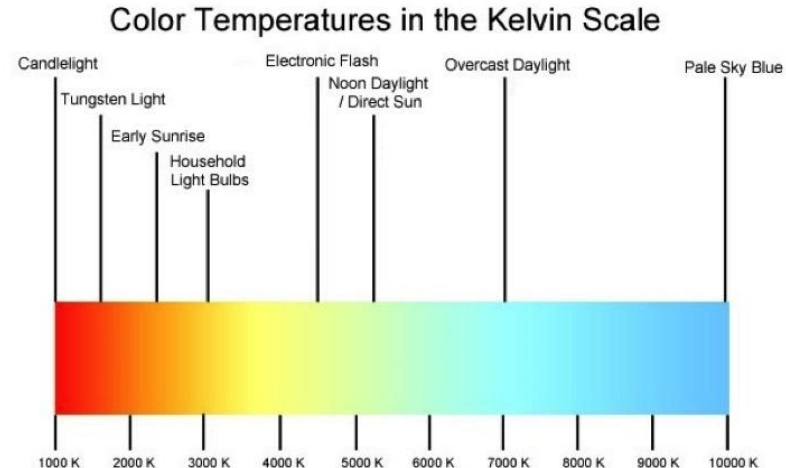
Designer

- The color specifier/designer has the task of knowing how the reception of visual stimulation, its processing and evoked responses in conjunction with the hormonal system, produces the best possibilities for the welfare of human beings
- However , since one cannot affect the individual's personal history in relation to color, the designer is forced to design toward the experiences of color that affect the vast majority of people the same way

Evidence Based Design - Lighting

"The U.S. National Society for the Prevention of Blindness investigated the importance of environmental lighting for school children. Its 1963 report verified that visual efficiency had a marked effect on many academic outcomes and that it, in turn, was influenced by a number of extremely important factors, including the stage of growth and development of the eyes; the presence or absence of eye defects; the presence and amount of glare, which often resulted from lighting reflected on classroom items such as desk tops; and the relative brightness of objects and their backgrounds, such as the contrast between environmental objects and classroom walls, floors, or ceilings"

- Effects:
 - Stage of growth
 - Development of the eyes
 - Presence or absence of eye defects
 - Presence & amount of glare



Evidence Based Design - Wayfinding

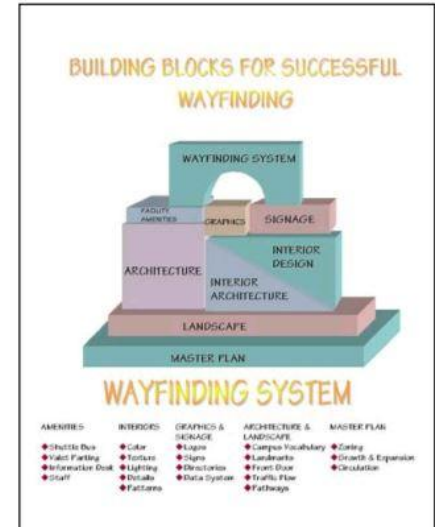
“Good wayfinding design promotes healing because being able to understand their environment provides visitors with a sense of control and empowerment, key factors in reducing stress, anxiety and fear - feelings that undermine the body’s ability to heal”

Wayfinding Factors

- Knowing where he or she is
- Knowing his or her destination
- Knowing which route gets him/her to the destination
- The ability to follow that route
- Knowing when he/she has reached the destination

The Building Block Model

- Master Plan
- Landscape
- Interior Architecture
- Interior Design
- Signage
- Graphics
- Facility amenities



Evidence Based Design - Acoustics

1. Background noise: dampening background noise and preventing excess noise from outside entering the teaching space. While air conditioning units contribute to this, so too does a trend towards operable windows for cross-flow ventilation.
2. Reverberation time (RT): shortening the RT will help with speech intelligibility, and the added absorption will reduce the overall sound level within the room without adversely affecting the signal-to-noise ratio (SNR).
3. Signal-to-noise ratio (SNR): this generally becomes less favorable for hearing as the distance between the speaker and the student increases. In addition, the noise level in educational institutions can be described as a desired signal with a highly fluctuating fraction of interfering noise, that's largely dependent on the relevant teaching process.



Evidence Based Design - Materials

Function of the space + How much time people will spend in the space + The mood you want the space to evoke

Hallways/Entryways -

- Enliven a space with brighter, bolder colors, but the same design features in a space where people will spend long periods of time could lead to unhappiness, uneasiness, or a lack of productivity

Staff Lounge -

- Use green tones, comfortable furniture, and natural light (or, at least, the illusion of natural light) to create a quiet refuge away from the stimulating and stressful hospital environment

Office Space -

- Intended to enhance productivity, might have one area designed with neutral or subdued colors for long periods of thoughtful or analytical work, and another accented with brighter, more stimulating colors where employees can reenergize

*Use natural wood and stone with a neutral palette and rich accent colors to convey a sense of wealth, sophistication, honesty, and friendliness.



Evidence Based Design - Materials

PROS

Concrete

- Durable, tough, resilient
- Easy to clean and maintain
- Many refinish options

Hard Wood

- Provides warmth as an insulator and retains heat
- Easy to clean
- Long-lasting

Tile

- Waterproof

Carpet

- Comfortable, soft, warm
- Affordable

CONS

Concrete

- Cracking will occur
- Cold and hard

Hard Wood

- Loud Noise
- High maintenance, not the best durability

Tile

- Echoes room
- Easily breaks and difficult to repair

Carpet

- Stains
- Shows wear and tear



Concept

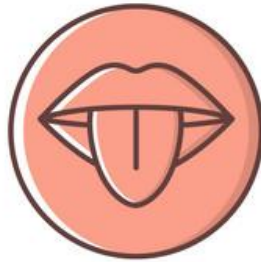
FIVE SENSES



HEARING



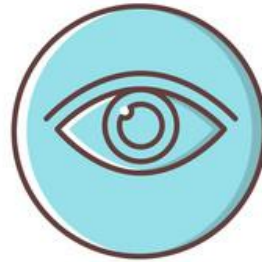
SMELL



TASTE



TOUCH



VISION

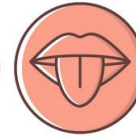
Concept



HEARING



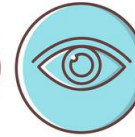
SMELL



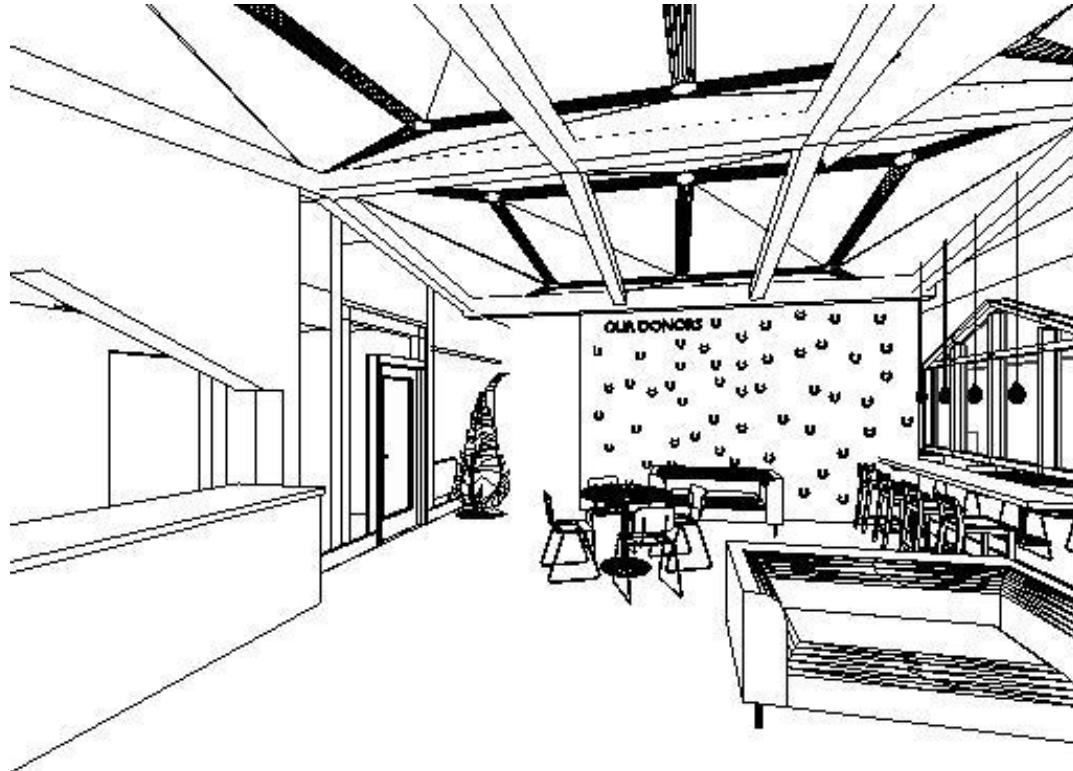
TASTE



TOUCH



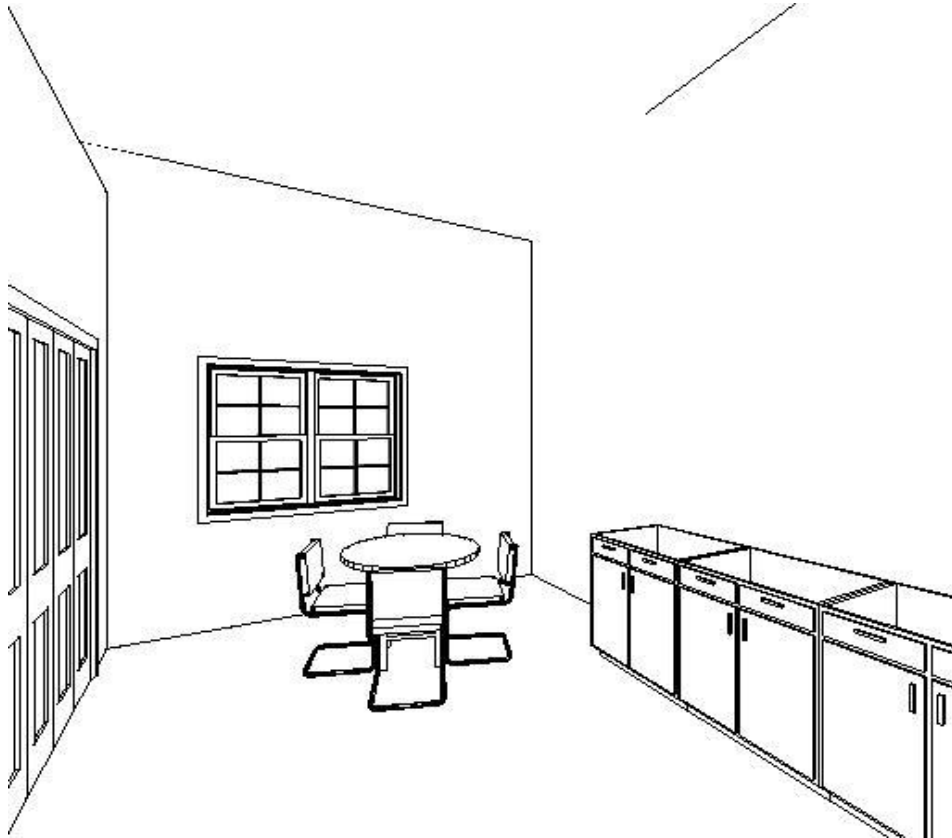
VISION



- Acoustical ceiling tiles
- Smell of graduation tree
- Feeling of comfortable materials for parents to relax while waiting
- Sight of donor wall, windows to beautiful outdoors

Lobby/Reception

Concept



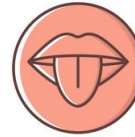
FIVE SENSES



HEARING



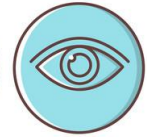
SMELL



TASTE



TOUCH

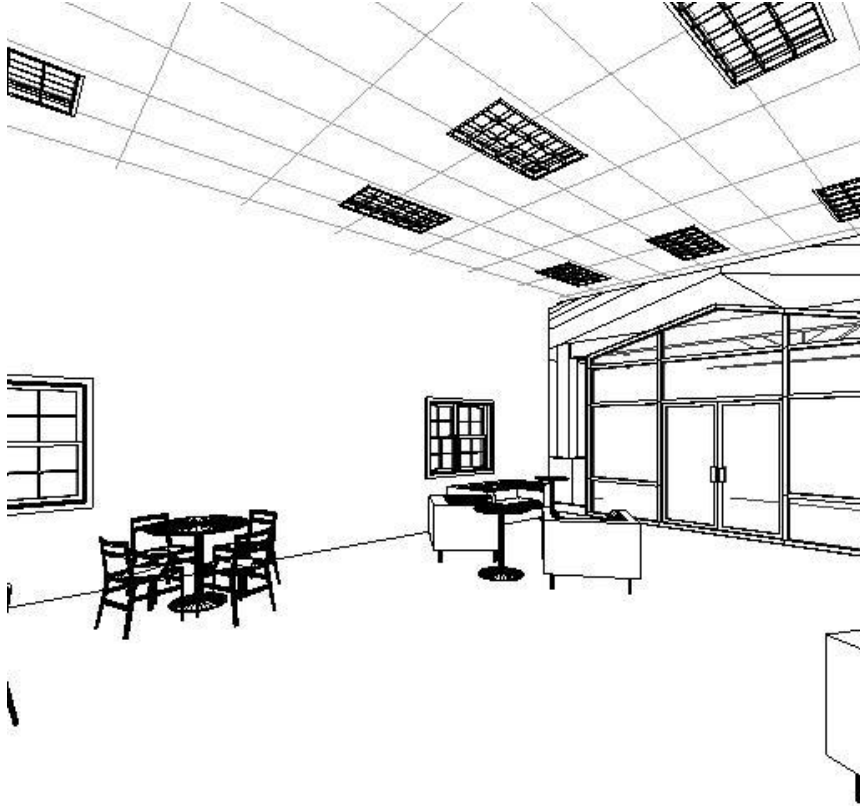


VISION

- Acoustical ceiling tiles/wall panels
- Smell of cleanliness--toothpaste and soap
- Taste of toothpaste when learning how to brush teeth
- Feeling of shoelaces when learning to tie shoes, surrounding wood textures, water on skin when washing hands
- Sight of life skills activities

Life Skills Room

Concept



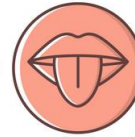
FIVE SENSES



HEARING



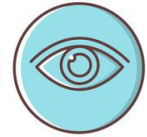
SMELL



TASTE



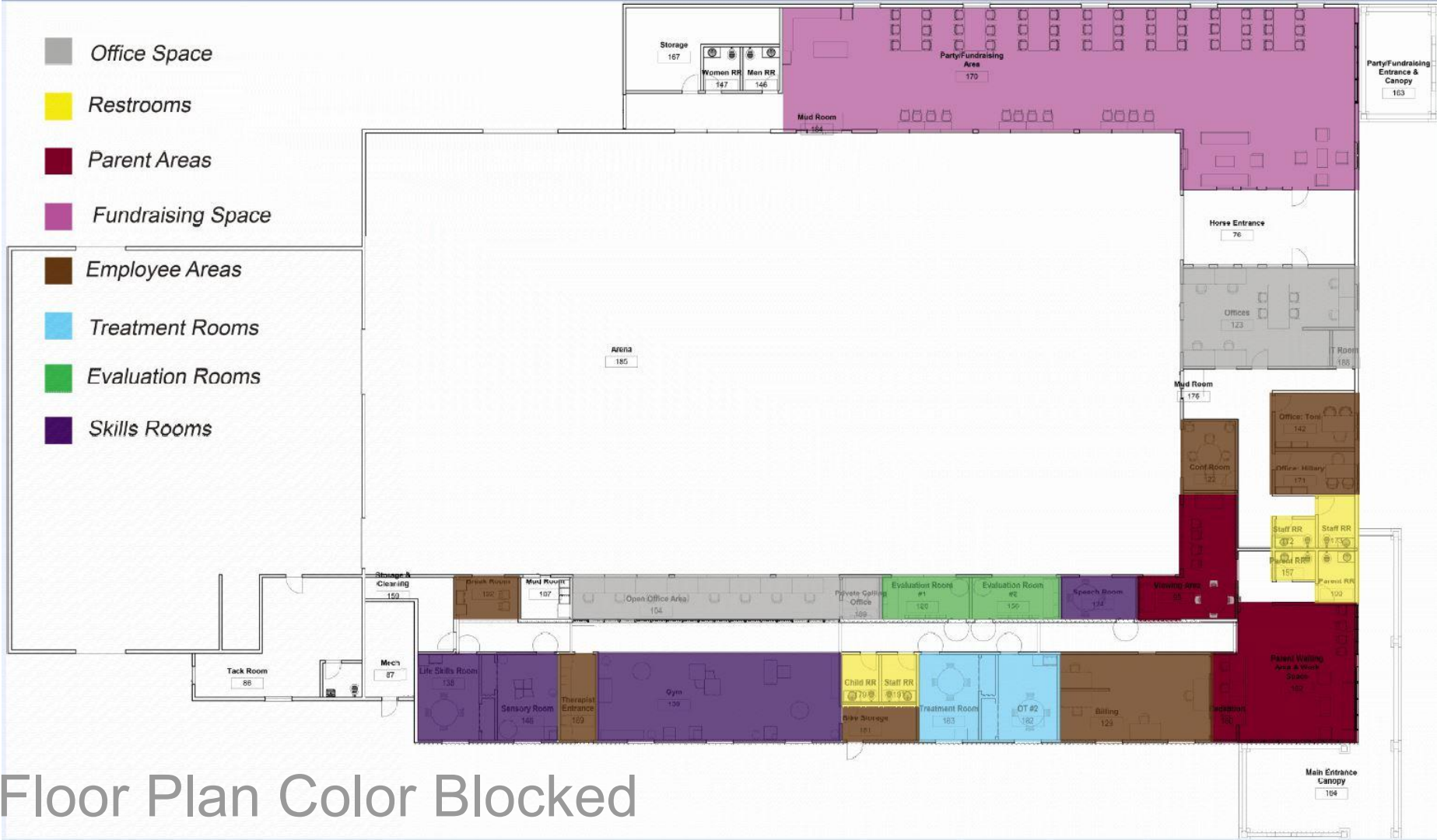
TOUCH



VISION

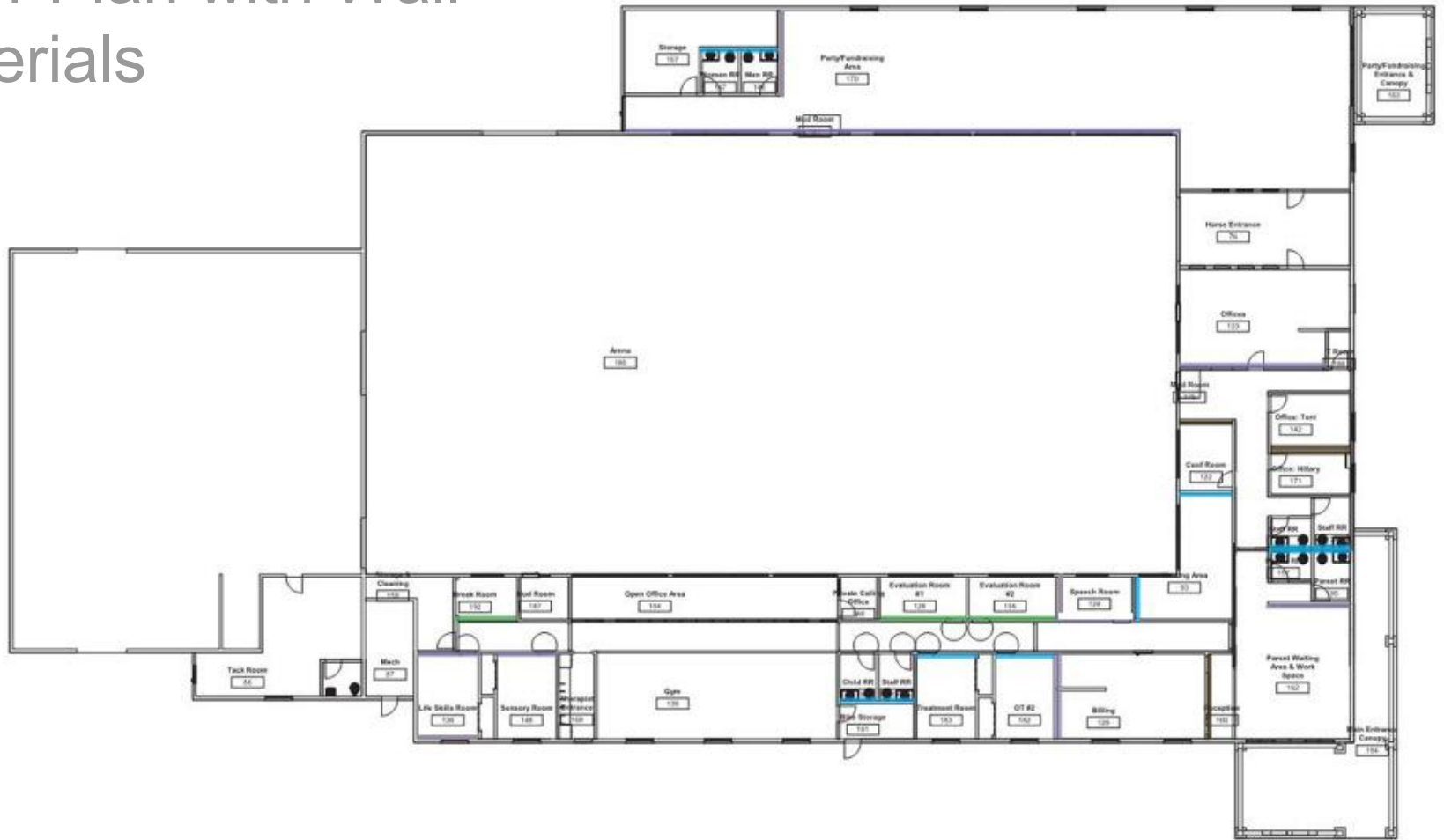
- Acoustical ceiling tiles
- Smell of food, fireplace burning, reduce smell of horses
- Taste of food during parties
- Feeling of comfortable materials throughout space
- Sight of relaxing and happy color scheme and rustic feel

Event/Party Room

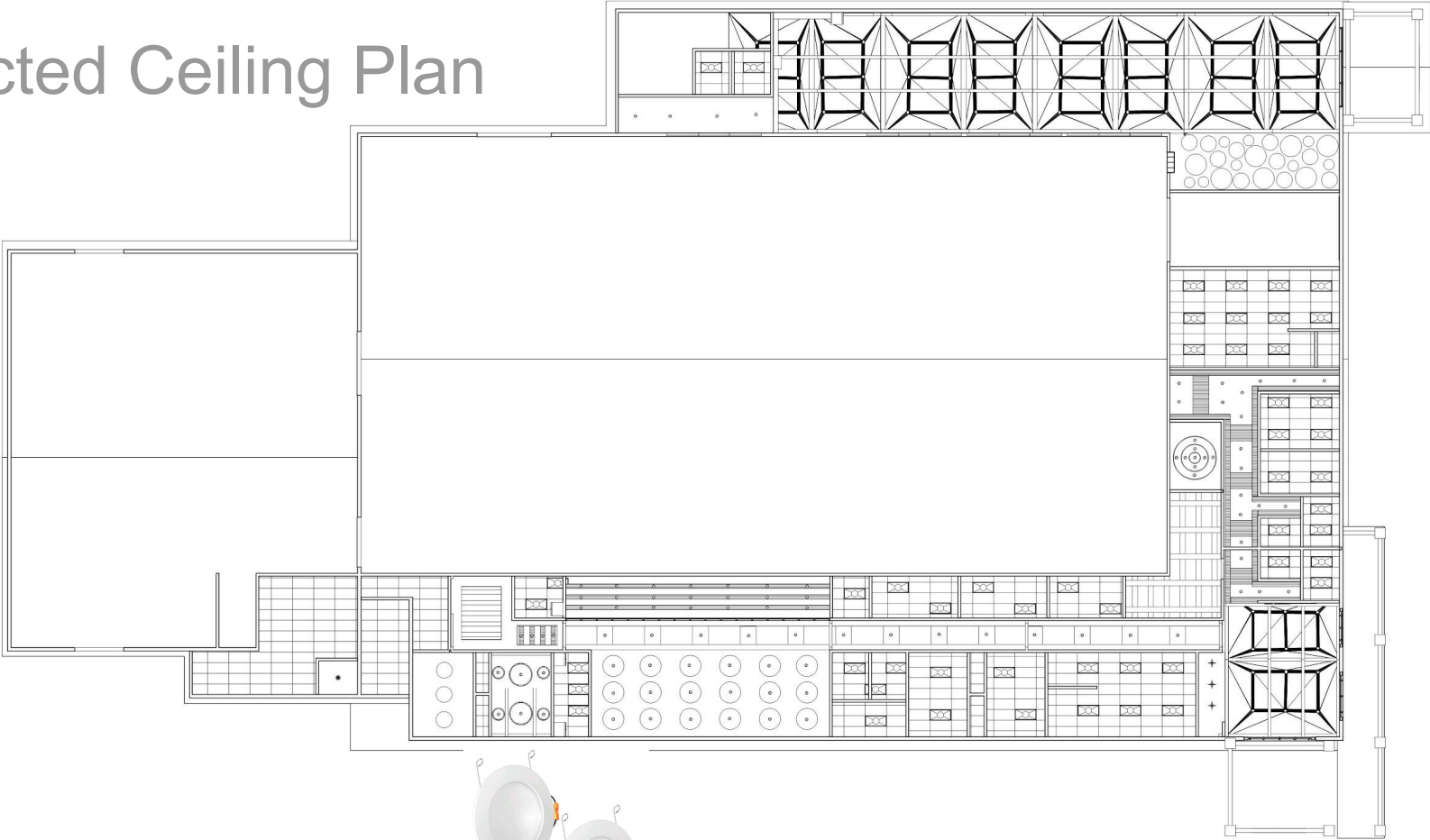


Floor Plan Color Blocked

Floor Plan with Wall Materials



Reflected Ceiling Plan



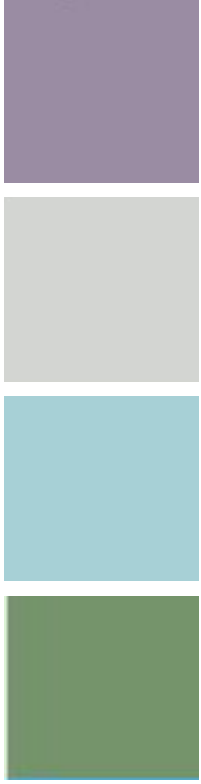
DLED-5500 Hidden Cove Light



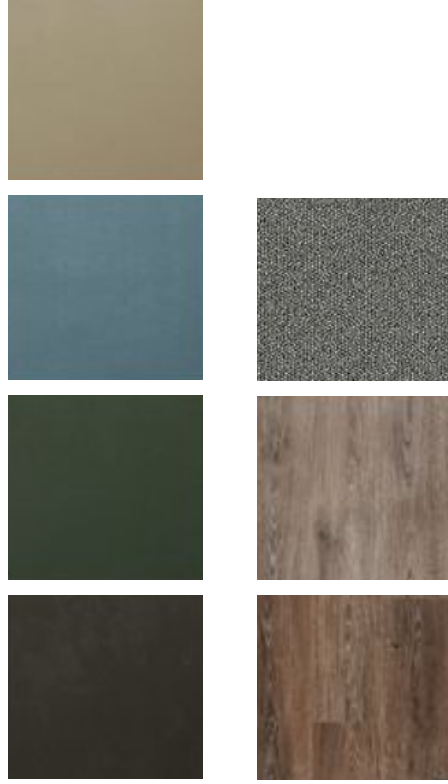
Luxrite LED Indirect cans

Materials

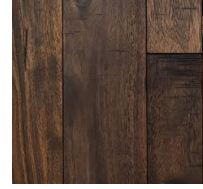
Wall Colors



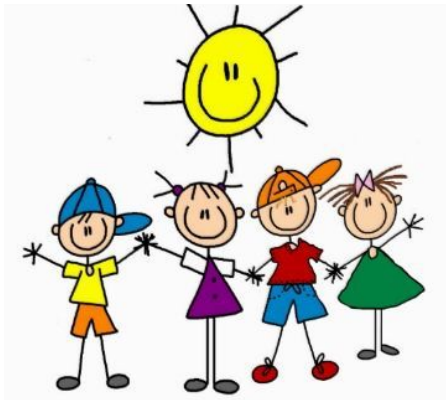
Flooring Options



Wall Accents

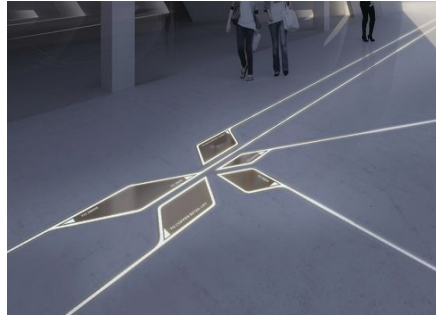


Artwork



<https://www.longdom.org/articles/art-and-autism-caregiver-input.pdf>

Wayfinding



Corridor Rendering

Brainstorming - Reception



Reception Floor Plan

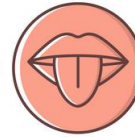
FIVE SENSES



HEARING



SMELL



TASTE

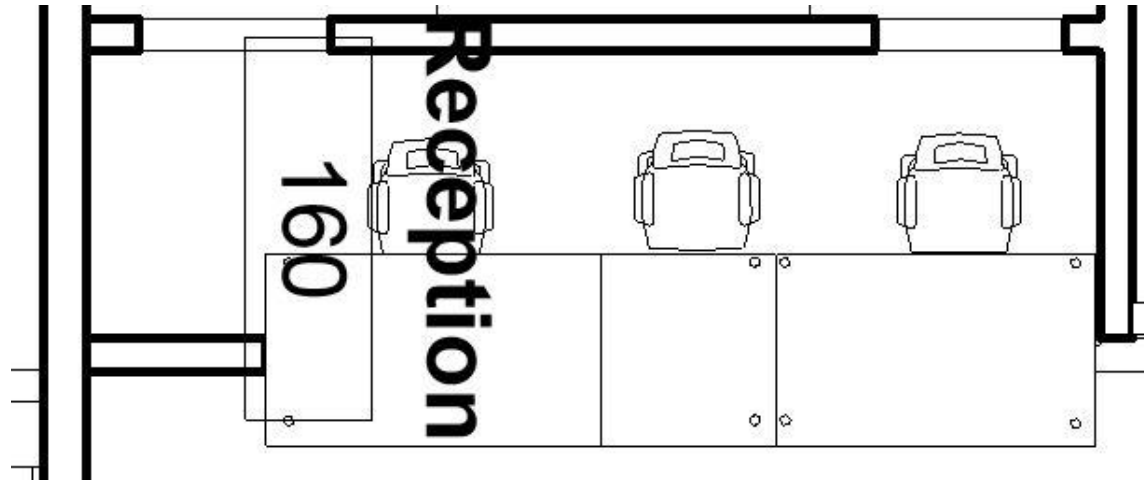


TOUCH



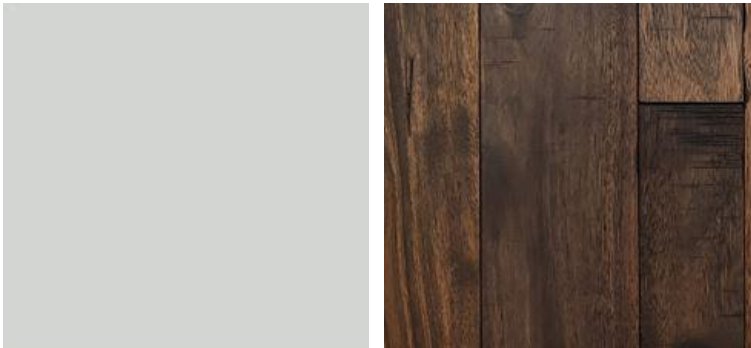
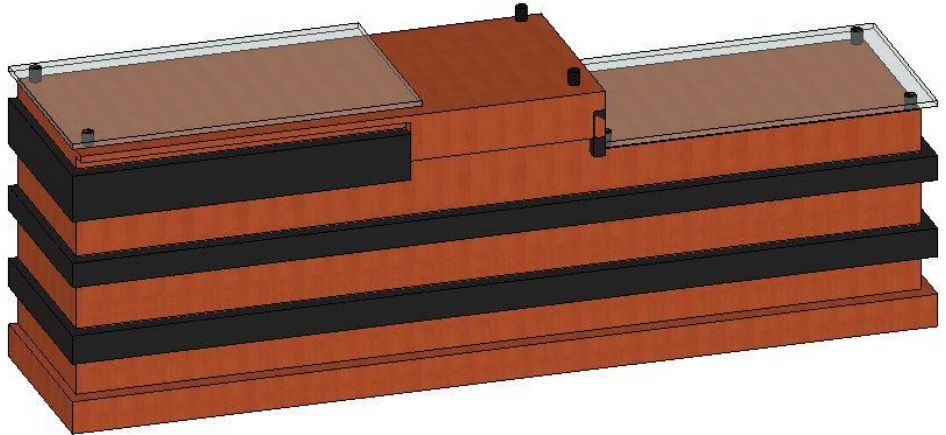
VISION

- Lots of natural light
- Touch/feeling of Graduation Tree and wood textures
- Smell of horses & pine scent from Graduation Tree
- Acoustical privacy from treatment rooms, OT rooms, arena, etc.



Reception

1. Steelcase - Gesture
2. Custom Reception Desk



Reception Renderings

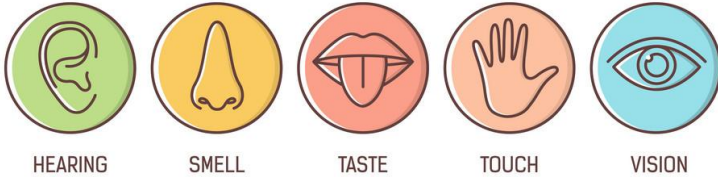


Brainstorming - Waiting Area

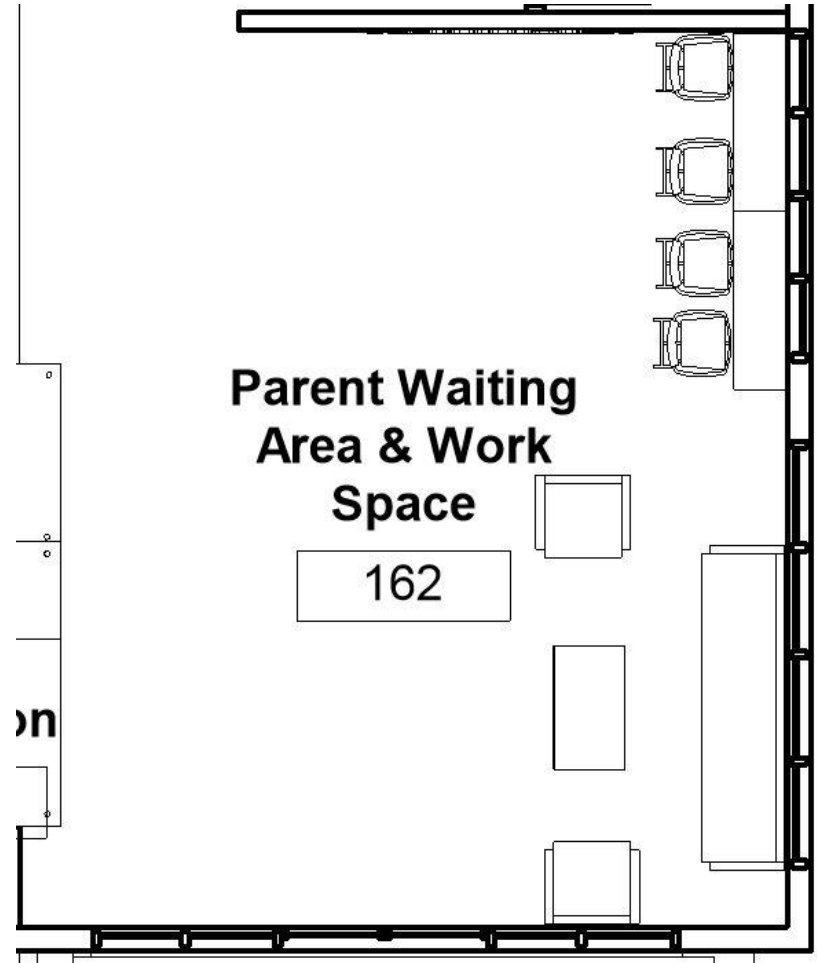


Waiting Area Floor Plan

FIVE SENSES



- Acoustical privacy to complete work
- View through large windows to outdoor patio
- Feeling of comfortable seating materials
- Taste of coffee/drink station
- Reduced smell of horses



Waiting Area

1. Steelcase - Enea
2. Kimball - fiXt Coffee Table
3. Steelcase - Millbrae Lifestyle Lounge
4. Steelcase - Campfire Standing Height Slim Table



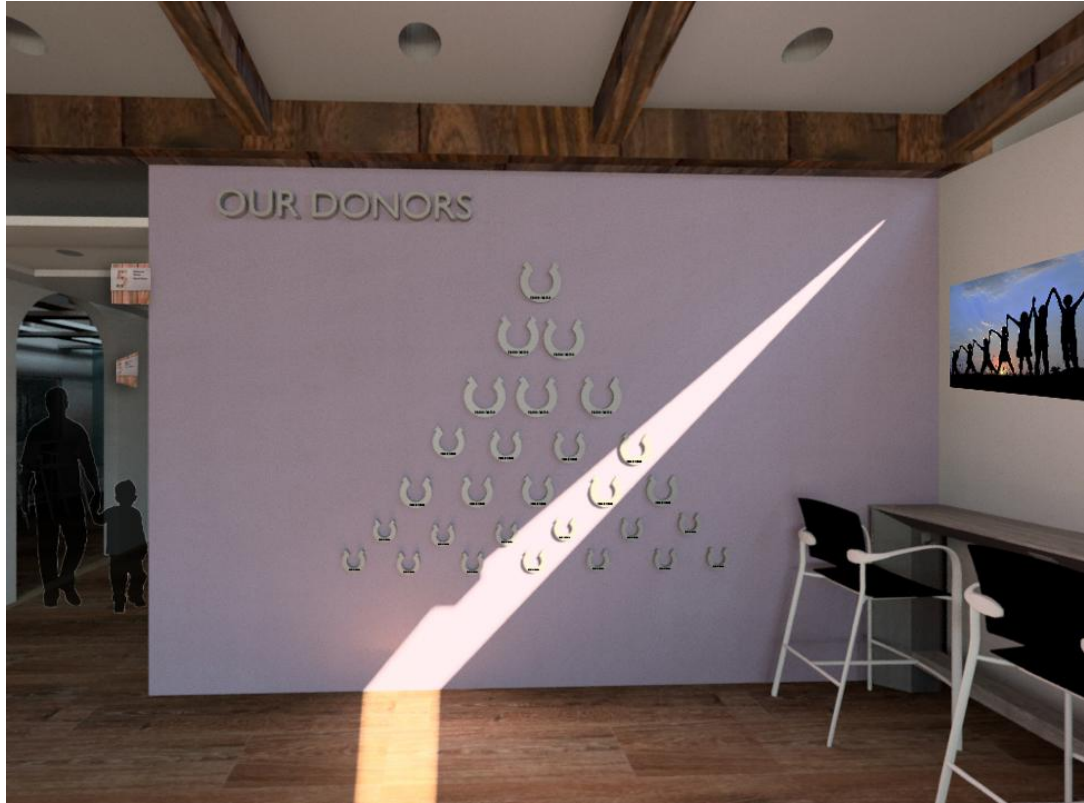
Waiting Area Renderings



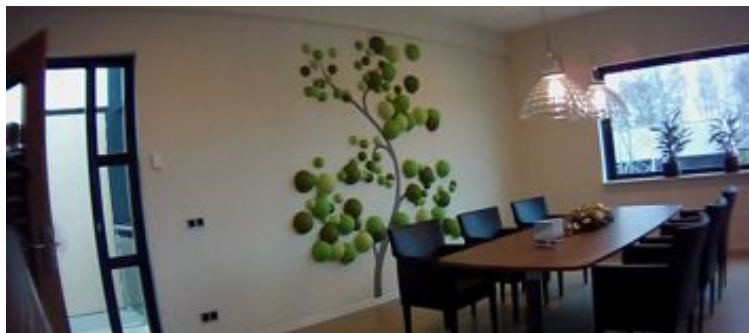
Donor Wall



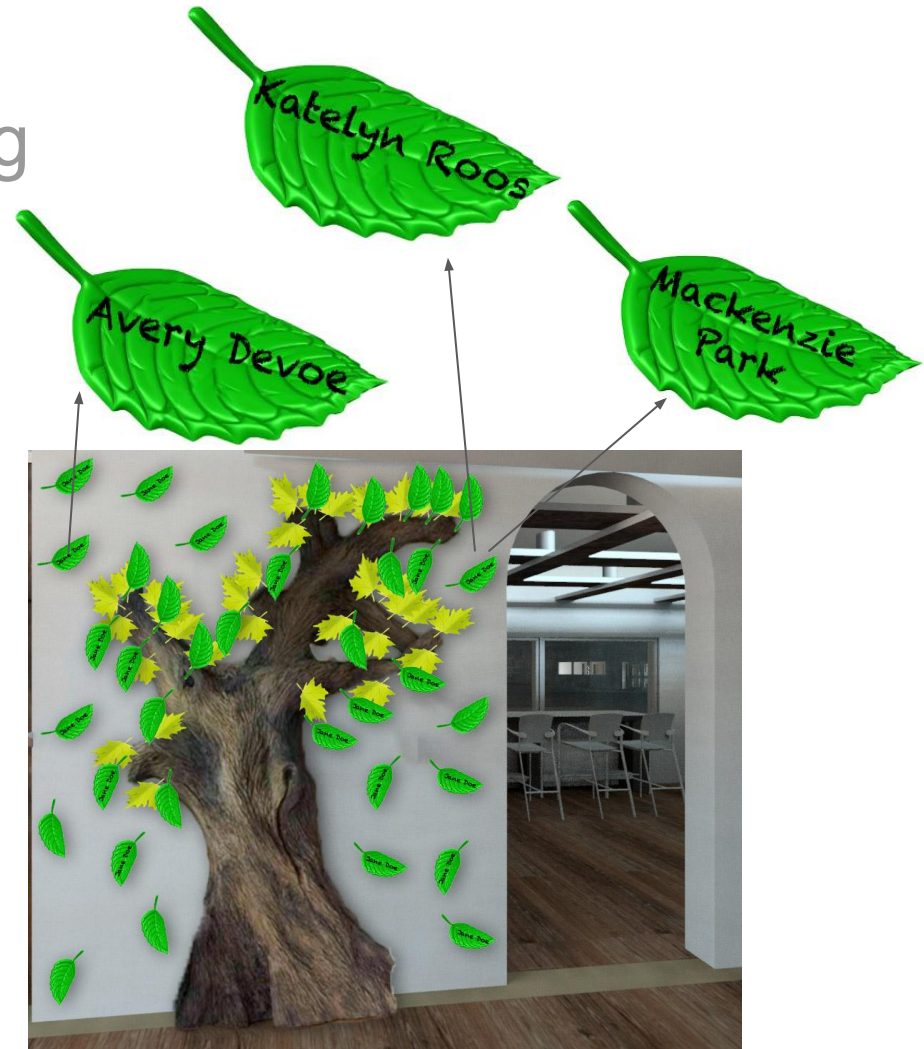
Donor Wall Rendering



Graduation Tree



Graduation Tree Rendering

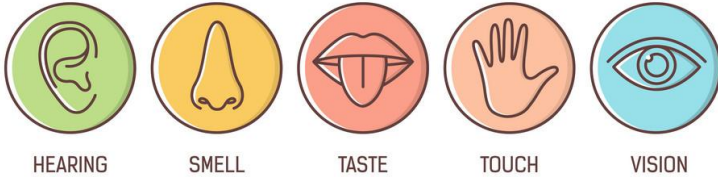


Brainstorming - Viewing Area

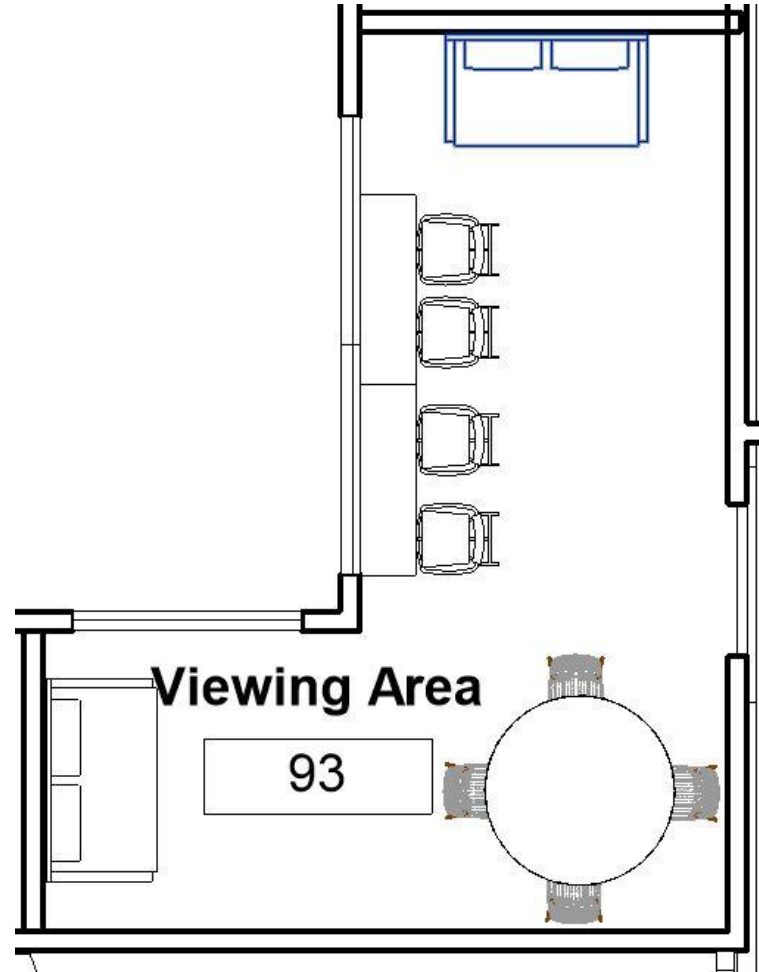


Viewing Area Floor Plan

FIVE SENSES

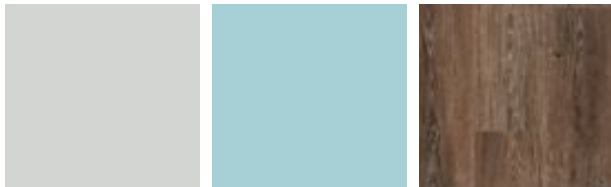


- Large windows looking into arena
- Acoustical privacy for parents to work and watch children
- Smell/taste of coffee/drink station & reduced smell of horses
- Feeling of comfortable seating materials



Viewing Area

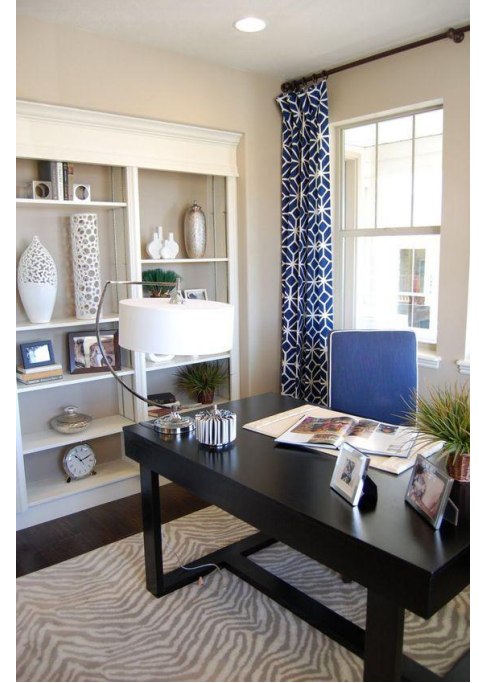
1. Kimball - Pep
2. Steelcase - Enea
3. Kimball - KORE Table
4. Steelcase - Campfire Standing Height Slim Table
5. Steelcase - Millbrae Lifestyle Lounge
- 6.



Viewing Area Renderings



Brainstorming - Private Offices



Private Offices Floor Plan

FIVE SENSES



HEARING



SMELL



TASTE

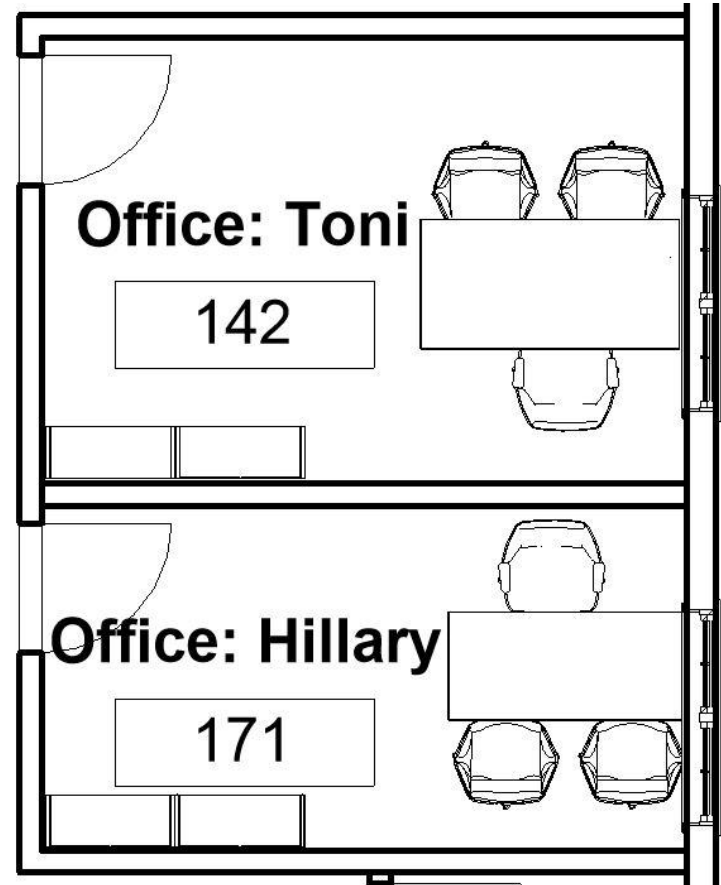


TOUCH



VISION

- Acoustical privacy
- Reduced smell of horses
- Taste of coffee/food from break room
- Feeling of wood texture & comfortable seating materials
- Sight of personal clients & privacy



Private Offices

1. Kimball - Priority
2. Kimball - fiXt
3. Kimball - Theo Guest
4. Kimball - Theo High-Back



1



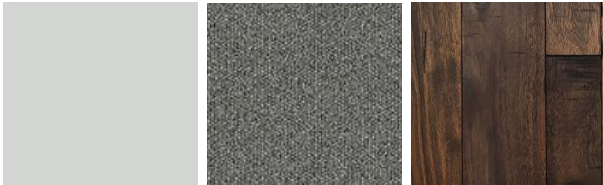
2



3



4



Private Office Renderings

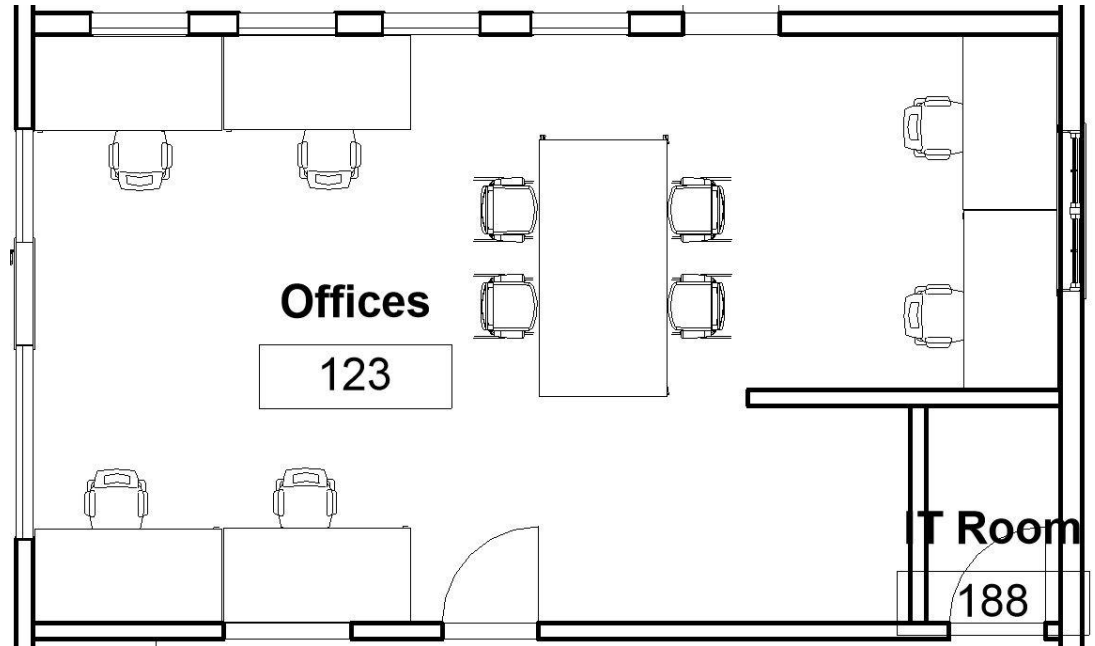
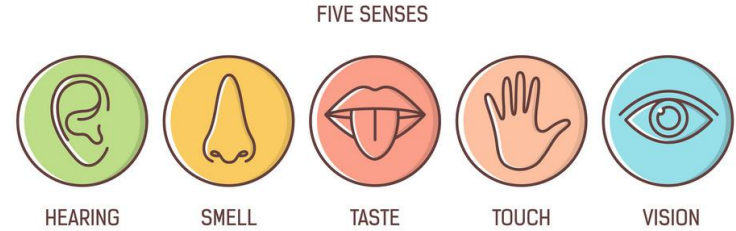


Brainstorming - Shared Offices



Shared Offices Floor Plan

- Acoustical privacy from arena
- Reduced smell of horses
- Taste of coffee/food from break room
- Feeling of wood textures & comfortable seating materials
- Sight of large open office space



Shared Offices

1. Steelcase - Migration
2. Kimball - fiXt Meeting Table
3. Steelcase - Gesture
4. Kimball - Flip

1



1



2



3



4



Shared Offices Renderings



Brainstorming - Open Office (Therapists)



Open Office Floor Plan

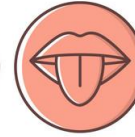
FIVE SENSES



HEARING



SMELL



TASTE

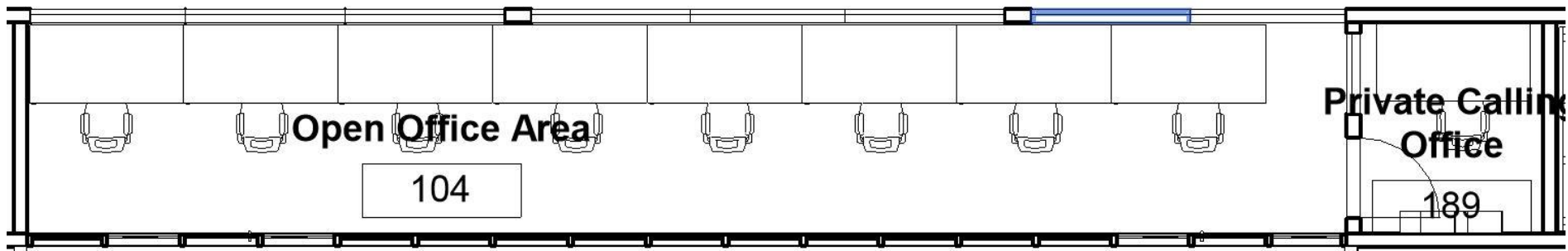


TOUCH



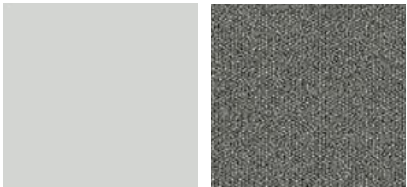
VISION

- Acoustical privacy from arena
- Reduced smell of horses
- Taste of coffee/food from break room
- Feeling of comfortable seating materials
- Sight of children & staff in arena



Open Office (Therapists)

1. Steelcase - Gesture
2. Steelcase - Migration



Open Office Renderings

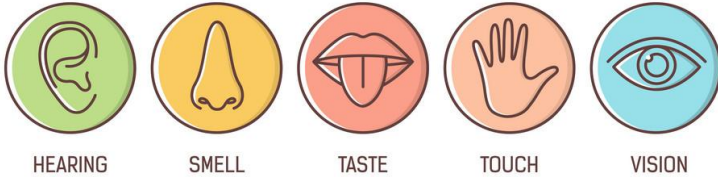


Brainstorming - Conference Room

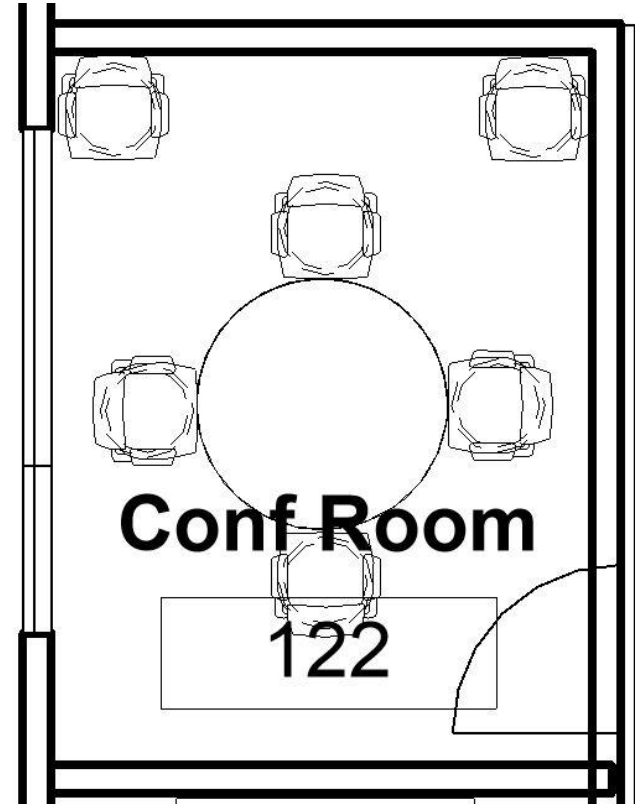


Conference Room Floor Plan

FIVE SENSES



- Acoustical privacy from arena
- Reduced smell of horses
- Taste of coffee/food from break room
- Feeling of wood textures & comfortable seating materials
- View into arena & sight of all people in conference room



Conference Room

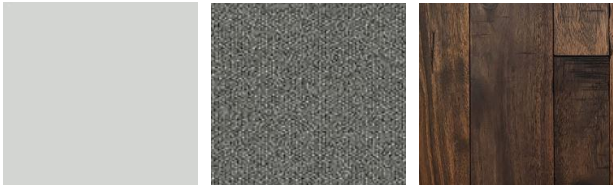
1. Steelcase - Gesture
2. Kimball - KORE Table



1



2



Brainstorming - Party/Fundraising Area



Party/Fundraising Area Floor Plan

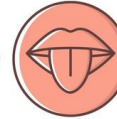
FIVE SENSES



HEARING



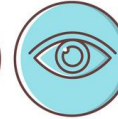
SMELL



TASTE

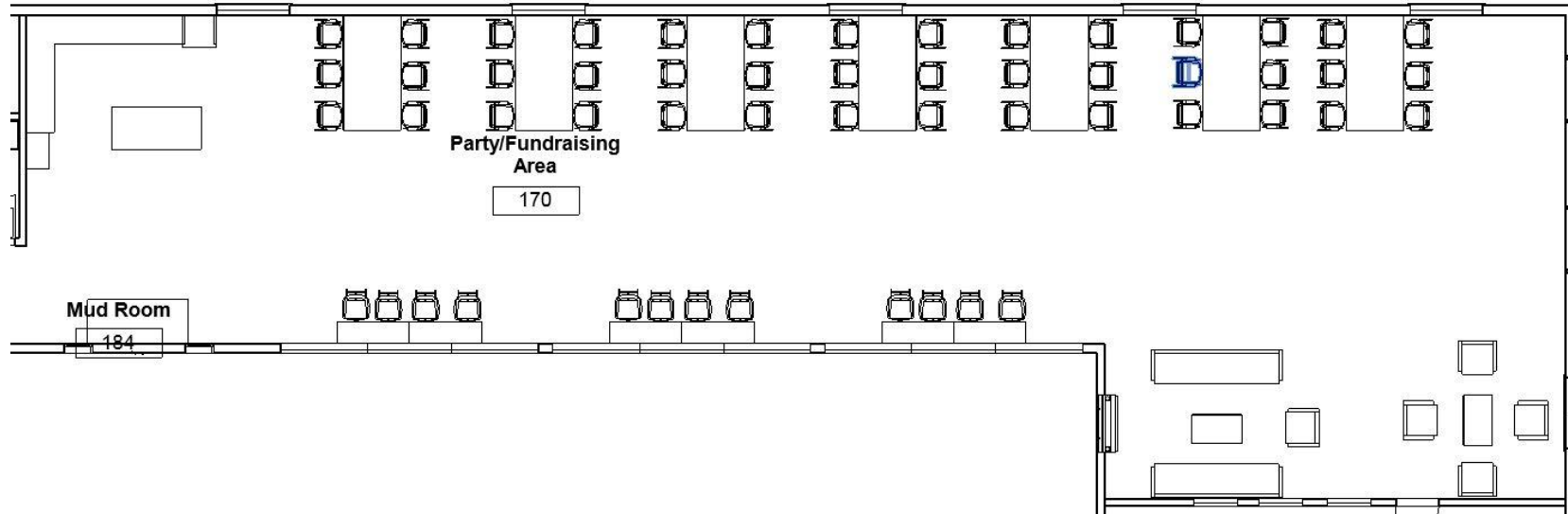


TOUCH



VISION

- Acoustical privacy from arena
- Reduced smell of horses & smell of wood from fireplace
- Taste of party room food from kitchen
- Feeling of wood textures & comfortable seating materials
- View into arena & large open space



Party/Fundraising Area

1. Steelcase - Millbrae Lifestyle Lounge
2. Kimball - Flip
3. Steelcase - Enea
4. Kimball - fiXt Coffee Table
5. Kimball - fiXt Meeting Table
6. Steelcase - Campfire Standing Height Slim Table

1



2



3



4



5



6



1



Party/Fundraising Area Renderings



Brainstorming - Sensory Room



Sensory Room Floor Plan

- Acoustical privacy from arena & other rooms
- Reduced smell of horses
- Feeling of wood textures, comfortable seating materials, sensory activating materials (toys)
- View hands on activities & hints of sensory activating colors

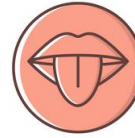
FIVE SENSES



HEARING



SMELL



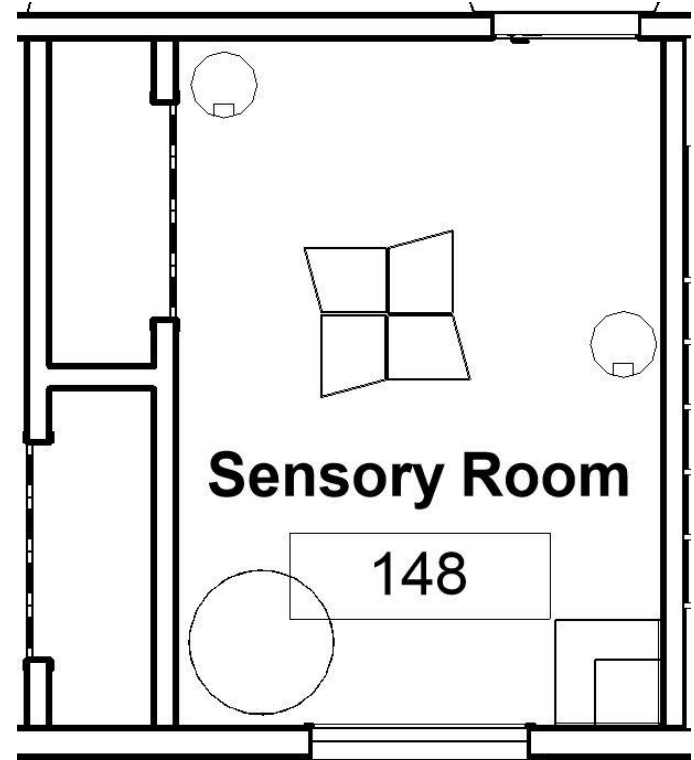
TASTE



TOUCH



VISION



Sensory Room



1



2



3

1. Theraputty - helps develop fine motor muscles in hands and fingers
2. Kimball - Pairings
3. Bi-Directional/Incline-Dcline Treadmill
4. Steelcase - Buoy
5. Kimball - Joelle
6. Pressure Vest/Pressure Sleeve - decreases anxiety
7. Peanut Ball Anti-Burst Therapy Ball - helps with stability or gross motor challenges
8. Romano Stand and Chair - mild vestibular input



4



6



5



7



8

<https://www.nationalautismresources.com/pressure-vest/>
<https://springbrookautismbehavioral.com/autism-programs-and-therapies/>

https://www.goldmedicalsupplies.com/mt200-gait-trainer-bi-directional-incline-decline-treadmill-720082/?utm_source=googleshopping&utm_medium=cpc&gclid=Cj0KCQiAw5_fBRCSARIsAGodhk_52MmLBWRgJdlypMldgxI0GGCutrltp4ZfrQZpdrsaYIhLxb6PHQ4aAhGnEALw_wcB

Sensory Room Renderings



Brainstorming - Gym



Gym Floor Plan

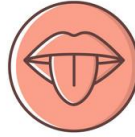
FIVE SENSES



HEARING



SMELL



TASTE

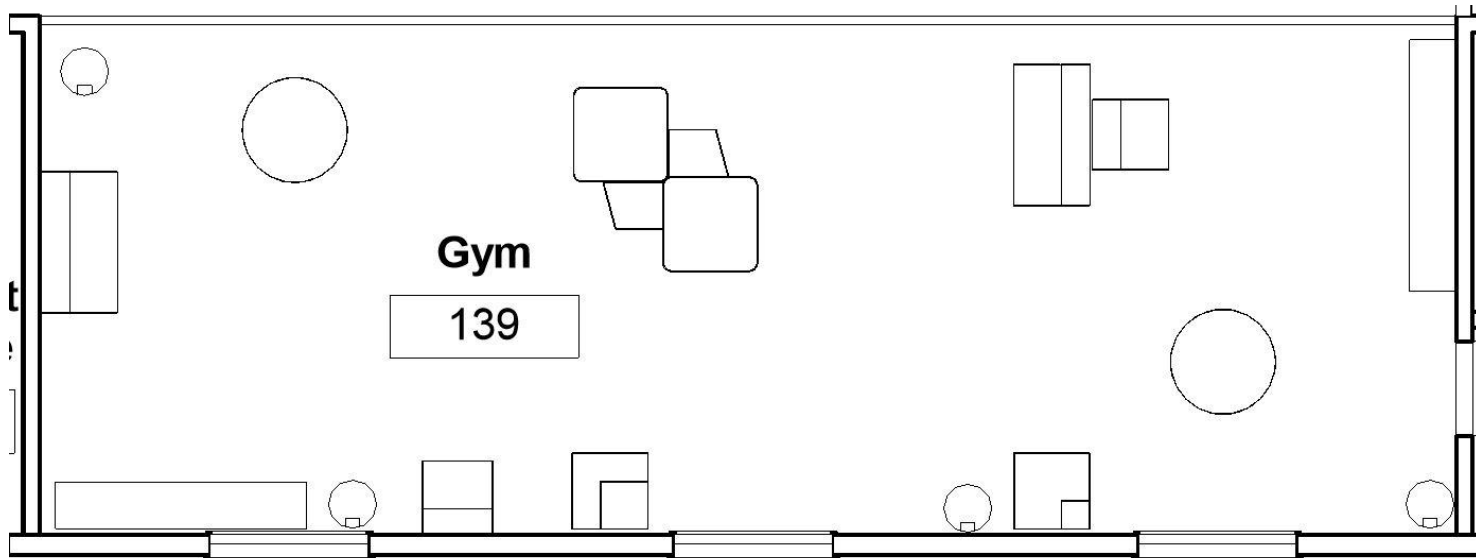


TOUCH



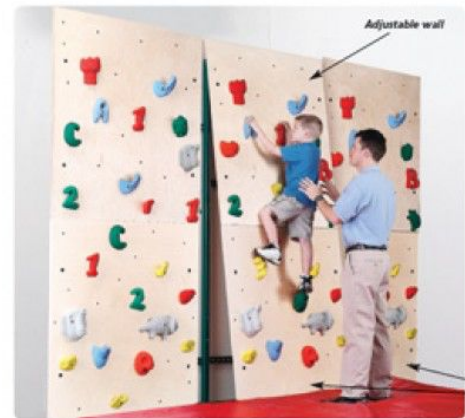
VISION

- Acoustical privacy from arena & other rooms
- Reduced smell of horses
- Feeling of wood textures, comfortable seating materials, sensory activating materials (toys)
- View hands on activities (rock climbing wall) & hints of sensory activating colors



Gym

1. Kimball - Joelle
2. Kimball - Pairings
3. Rock Wall - improves motor skills
4. Fold & Go Trampoline - develops gross motor strength, coordination, balance, and more
5. Steelcase - Buoy
6. Build n' Balance Set - develops gross motor and balance skills
7. Steelcase - Ripple

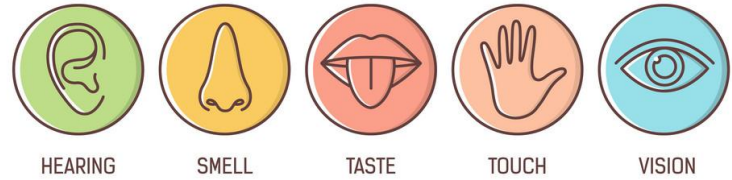


<https://www.nationalautismresources.com>
<https://www.4mdmedical.com/sammons-preston-climbing-wall-and-in-door-activity-fun-gym.html>

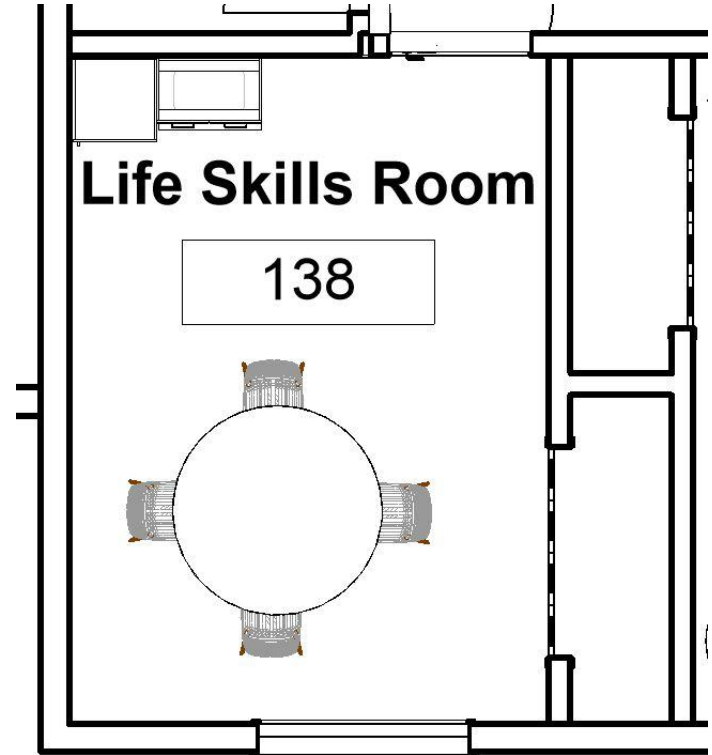
Gym Renderings



Life Skills Room Floor Plan



- Acoustical privacy from arena & other rooms
- Smell of toothpaste when learning to brush teeth
- Feeling of wood textures, comfortable seating materials, motor skills toys
- View hands on activities & hints of sensory activating colors

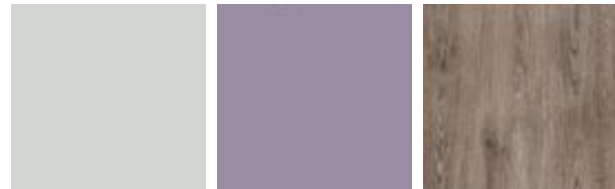


Brainstorming - Life Skills Room



Life Skills Room

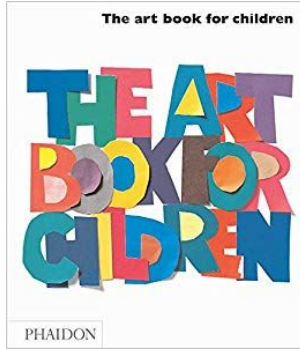
1. Dressing Frames - helps promote independence, work of hand eye coordination, fine motor skills and more
2. Kimball - Alterna
3. Tie Me - kids can practice looping and tying shoelaces
4. Kimball - Pep
5. Kimball - KORE Table



Life Skills Room Renderings



Brainstorming - Speech Room



Speech Room Floor Plan

- Acoustical privacy from arena & other rooms
- Reduced smell of horses
- Feeling of wood textures & comfortable seating materials
- View hands on activities (pronunciation learning) & hints of sensory activating colors

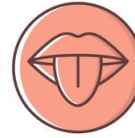
FIVE SENSES



HEARING



SMELL



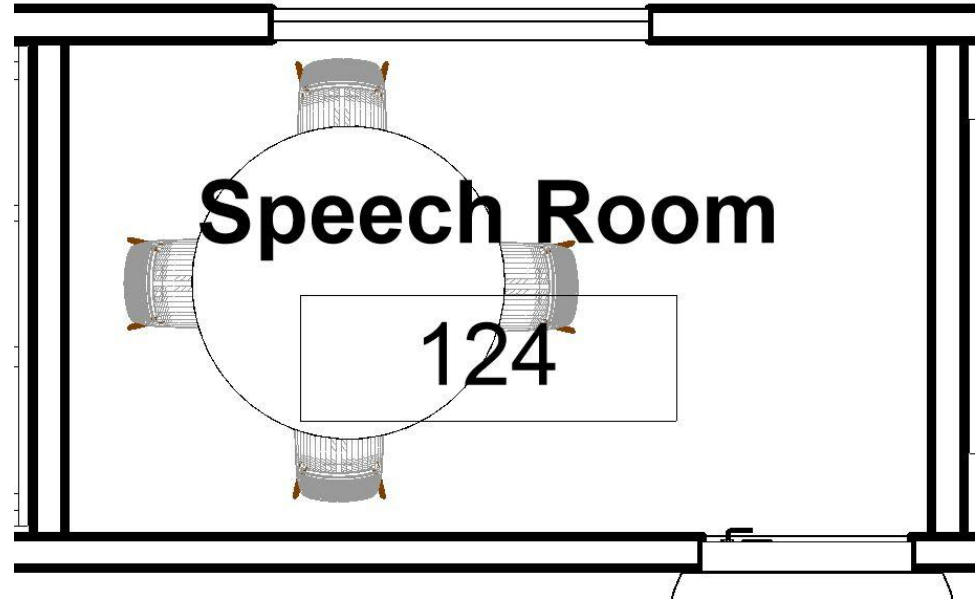
TASTE



TOUCH



VISION



Speech Room

1. SENSEational Alphabet Touch and Feel Picture Cards - each card includes a sensory experience such as an aroma or textured surface as well as a word in Sign Language and Braille
2. Communication Picture Card Sets - helps kids communicate and the hook coins you need to easily attach them to your schedules or sentence strips
3. Kimball - Pep
4. Kimball - KORE Table



1



2



<https://www.nationalautismresources.com>



3



4

Speech Room Renderings

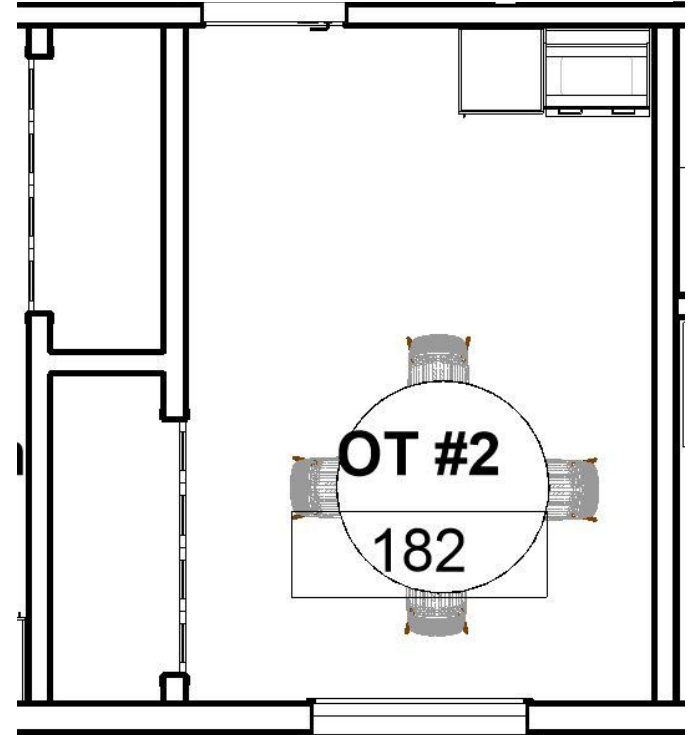
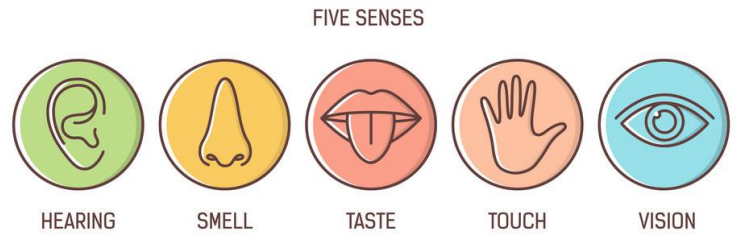


Brainstorming - OT Room



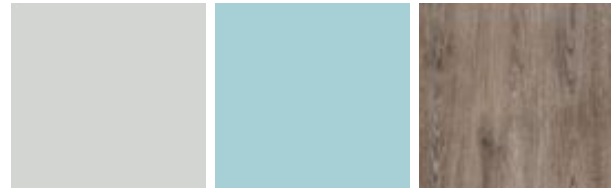
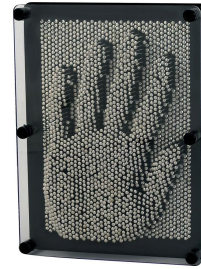
OT Room Floor Plan

- Acoustical privacy from arena & other rooms
- Reduced smell of horses
- Feeling of wood textures & comfortable seating materials
- View hands on activities & hints of sensory activating colors



OT Room

1. Stepping Stones - motor planning, balance, core strengthening, and coordination skills
2. Kimball - Alterna
3. Pin Art - connected to the sense of touch
4. Kimball - Pep
5. Kimball - KORE Table



OT Room Renderings



Brainstorming - Evaluation Room



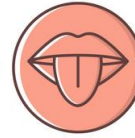
Evaluation Room Floor Plan



HEARING



SMELL



TASTE

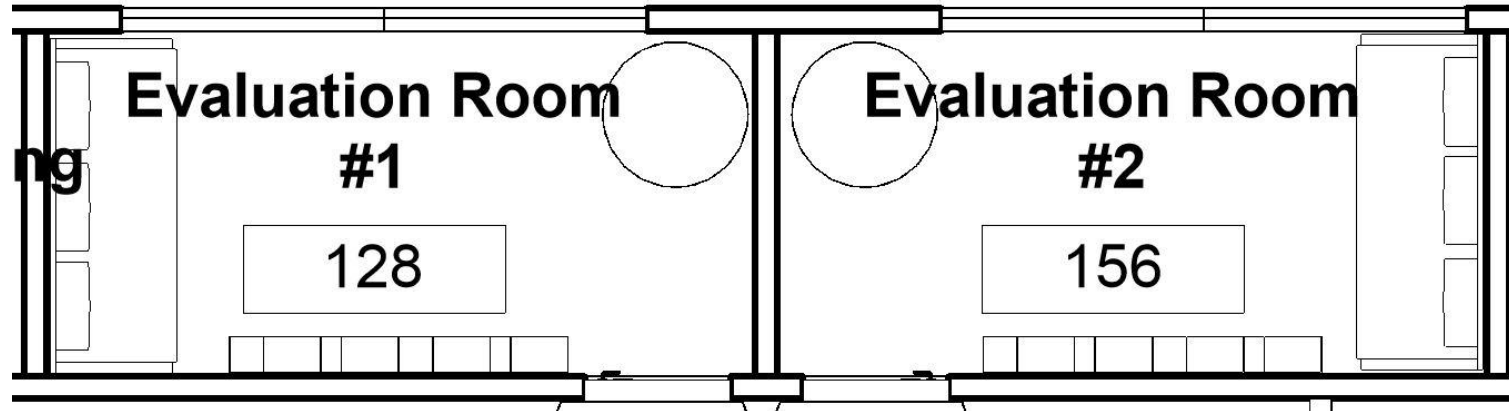


TOUCH



VISION

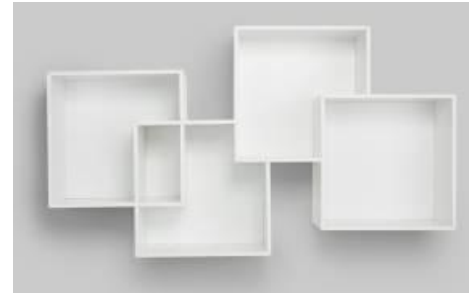
- Acoustical privacy from arena & other rooms
- Reduced smell of horses
- Feeling of wood textures & comfortable seating materials
- View hands on activities & hints of sensory activating colors



Evaluation Room

1. Steelcase - QUADRO Shelf
2. Kimball - Joelle
3. Steelcase - Millbrae Lifestyle Lounge

1



2



3



Evaluation Room Renderings



Brainstorming - Treatment Room

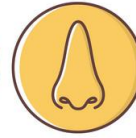


Treatment Room Floor Plan

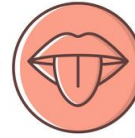
FIVE SENSES



HEARING



SMELL



TASTE

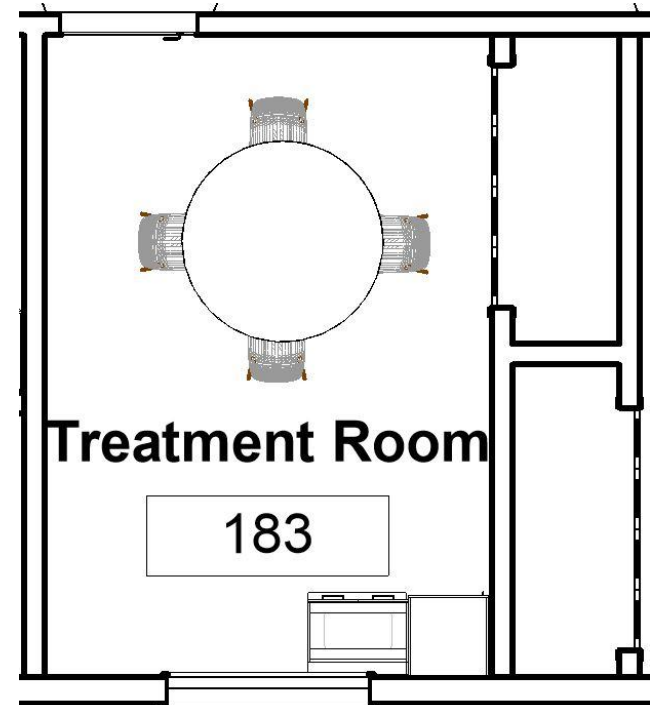


TOUCH



VISION

- Acoustical privacy from arena & other rooms
- Reduced smell of horses
- Feeling of wood textures & comfortable seating materials
- View hands on activities (interactive wall) & hints of sensory activating colors



Treatment Room

1. Kimball - Alterna
2. Kimball - Pep
3. Kimball - KORE Table



Treatment Room Renderings



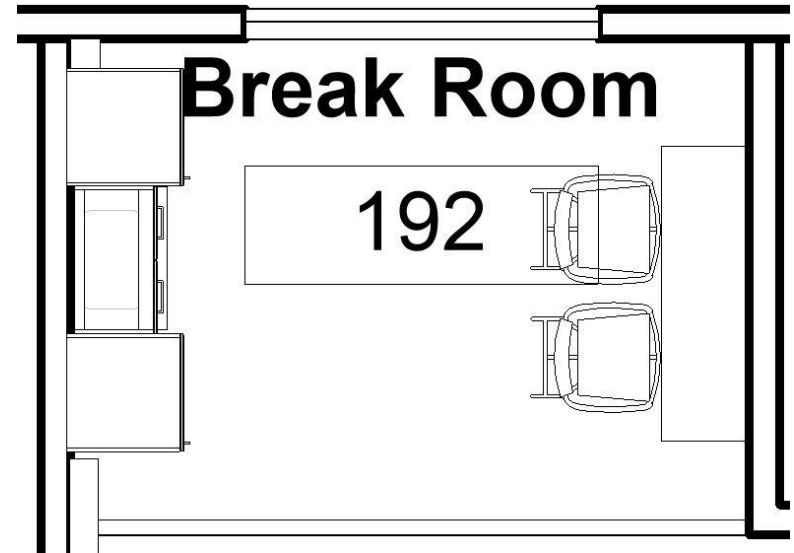
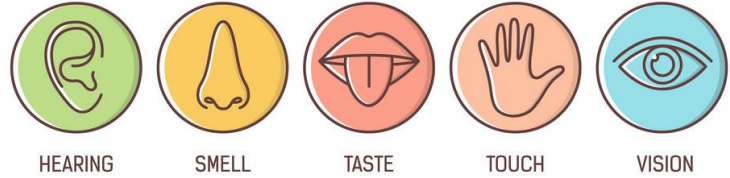
Brainstorming - Break Room



Break Room Floor Plan

- Acoustical privacy from arena & other rooms
- Reduced smell of horses
- Taste of coffee/food
- Feeling of wood textures & comfortable seating materials
- View of arena

FIVE SENSES



Break Room

1. Kimball - Alterna
2. Steelcase - Enea
3. Steelcase - Campfire Standing Height Slim Table

1



2



3



Brainstorming - Mud Room



Mud Room Floor Plan

- Acoustical privacy from arena & other rooms
- Reduced smell of horses
- Feeling of wood textures, comfortable seating materials, antibacterial materials
- View of arena

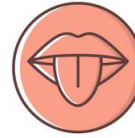
FIVE SENSES



HEARING



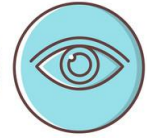
SMELL



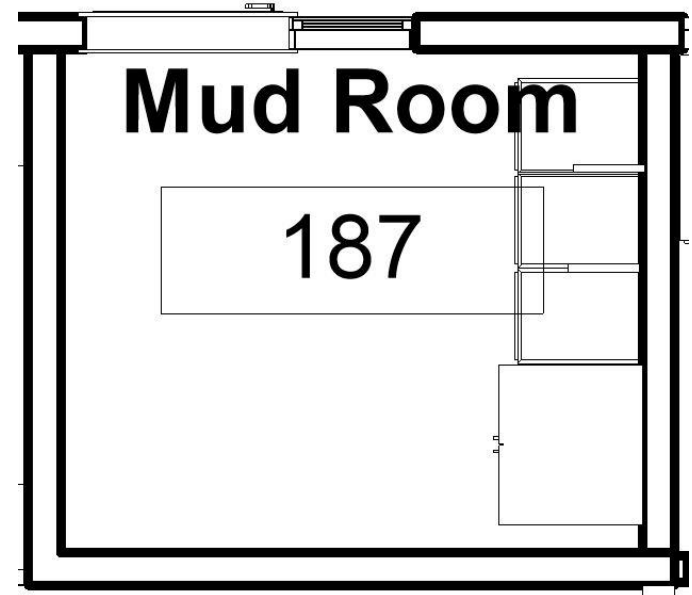
TASTE



TOUCH



VISION

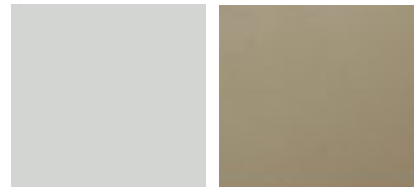


Mud Room

1. Kimball - Alterna



1



Mud Room Renderings

