



Yorktown Park



Charlie S., Laura M., Jonny R., Dani S.

Intro to Nebo

Our site lies in the east of Yorktown, a town of nearly 12,000 located in Delaware County Indiana. Yorktown prides itself on its active and involved community, a community that ranks Yorktown among the top 20 towns to raise a family throughout Indiana. It is because of this community that we believe that Yorktown will be a great place to implement a new pocket park.

The plot inhabits 0.52 acres of land located between two homes, this future development sits in the middle of a residential area in the vicinity of a commercial district and beside an industrial site. It was originally the plot that two single family homes resided on, however, now it is a vacant lot soon to become Yorktown's newest public park.

An aerial photograph of a suburban neighborhood. The scene shows several houses with varying roof colors (brown, grey, blue) and green lawns. A prominent road runs vertically through the center. To the right, there is a large green field, possibly a park or sports field, with a building labeled 'Bradford Park Bible Church' nearby. The overall lighting is soft, suggesting late afternoon or early morning.

Why Nebo?

Yorktown has an estimated number of about 4,300 families living within its district. Within the vicinity of this site alone lives a significant portion of those families. All of which deserve a space that best represents this demographic of residents.

As CAP Students at Ball State, we want to prioritize simplicity, necessity, and enjoyment for the Yorktown residents.

Bradford Park
Bible Church



BEACON GIS PARCEL REPRESENTATION (Aerial Perspective)

Parcel # 172-175

SITE PICTURES

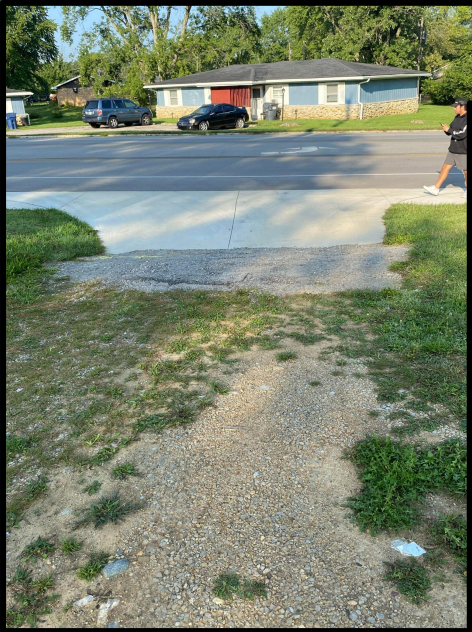
Terrain Pictures w/ Aerial Perspective



(AERIAL PROVIDED BY BEACON)

ADJACENT

GROUND LEVEL



LISTED: PARK FACES SINGLE FAMILY HOME(S) ACROSS STREET



LISTED: PARK FACES SINGLE FAMILY HOME(S)



LISTED: PARK FACES STREET AND AHEAD IS COMMERCIAL



LISTED: PARK FACES STREET, BRIDGE, & HOME(S)

LOCAL AMENITIES

The Players Club at Woodland Trails	6 min walk	from site
Heritage Hall Christian School	9 min walk	
Happy Dogs	13 min walk	
Colonial Apartment	22 min walk	
Yorktown High School	10 min bike	
Yorktown Middle School	10 min bike	



STRENGTHS



WEAKNESSES



OPPORTUNITIES



THREATS

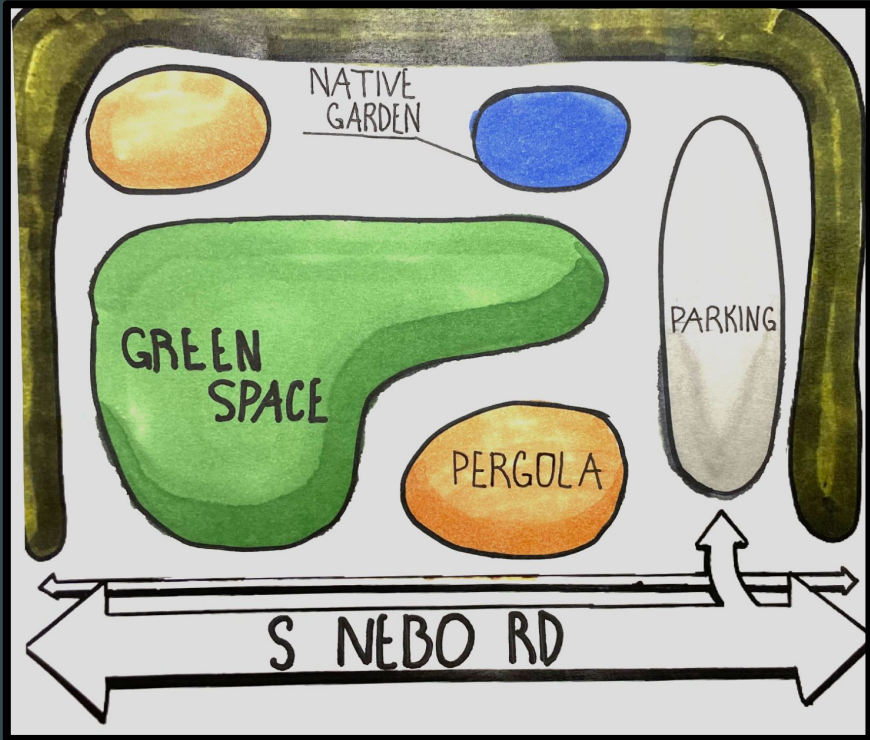


- Natural Tree Barrier
- Access to Gas/Electricity
- Surrounded by Residential
- Strong Local Trail Network
- Good Communication between Locals & Future Development

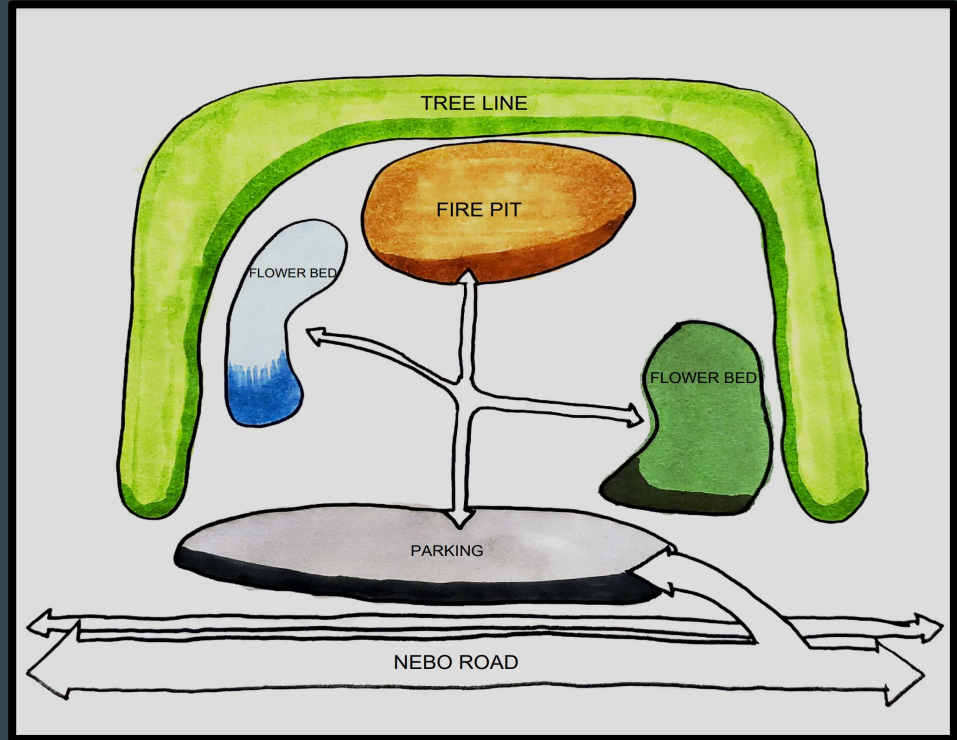
- No Crosswalk
 - Speed Limit (40)
- No nearby bus stops
- No Place to put Trash
- No nearby Parking

Bradford Park Bible Church (3 min.), McDonald's/Burger King/Subway (5 min.), The Players Club (7 min.), Foster's Flowers and Gifts (7 min.), Lowry's Homemade Candies (7 min.), Heritage Hall Christian School (9 min.), Grace Baptist Church (10 min.) Paradise Bar and Grill (15 min.)

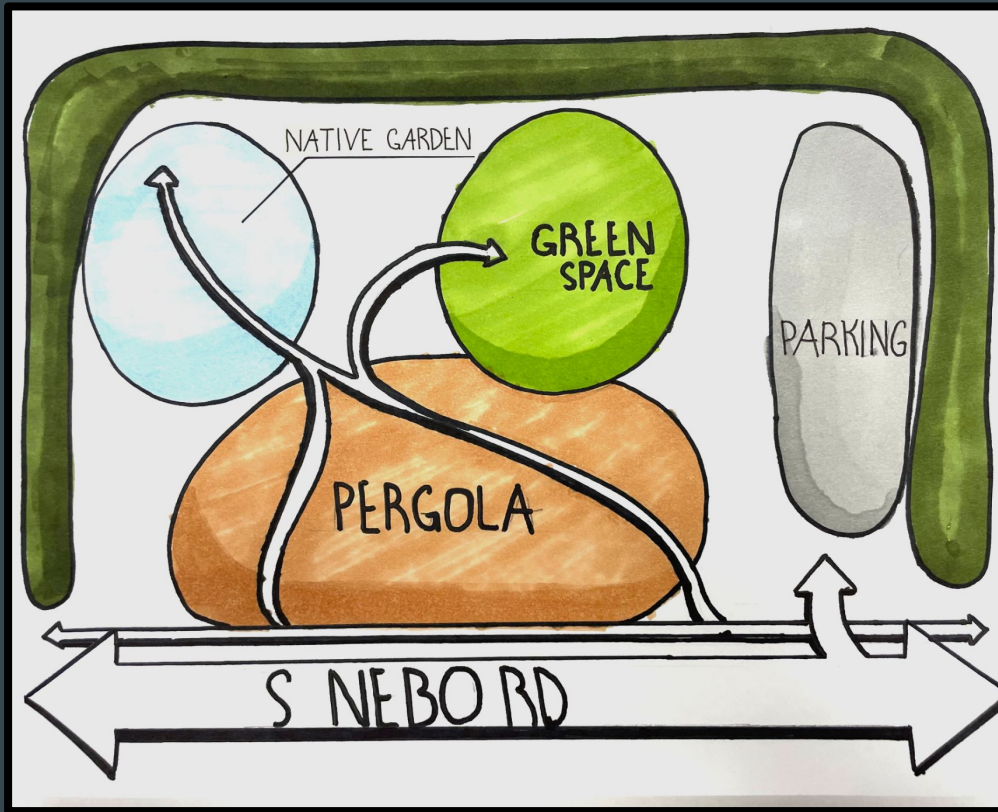
- Electrical Lines
- Busy street of Nebo (40 mph)
- Total square feet is 0.52 acres



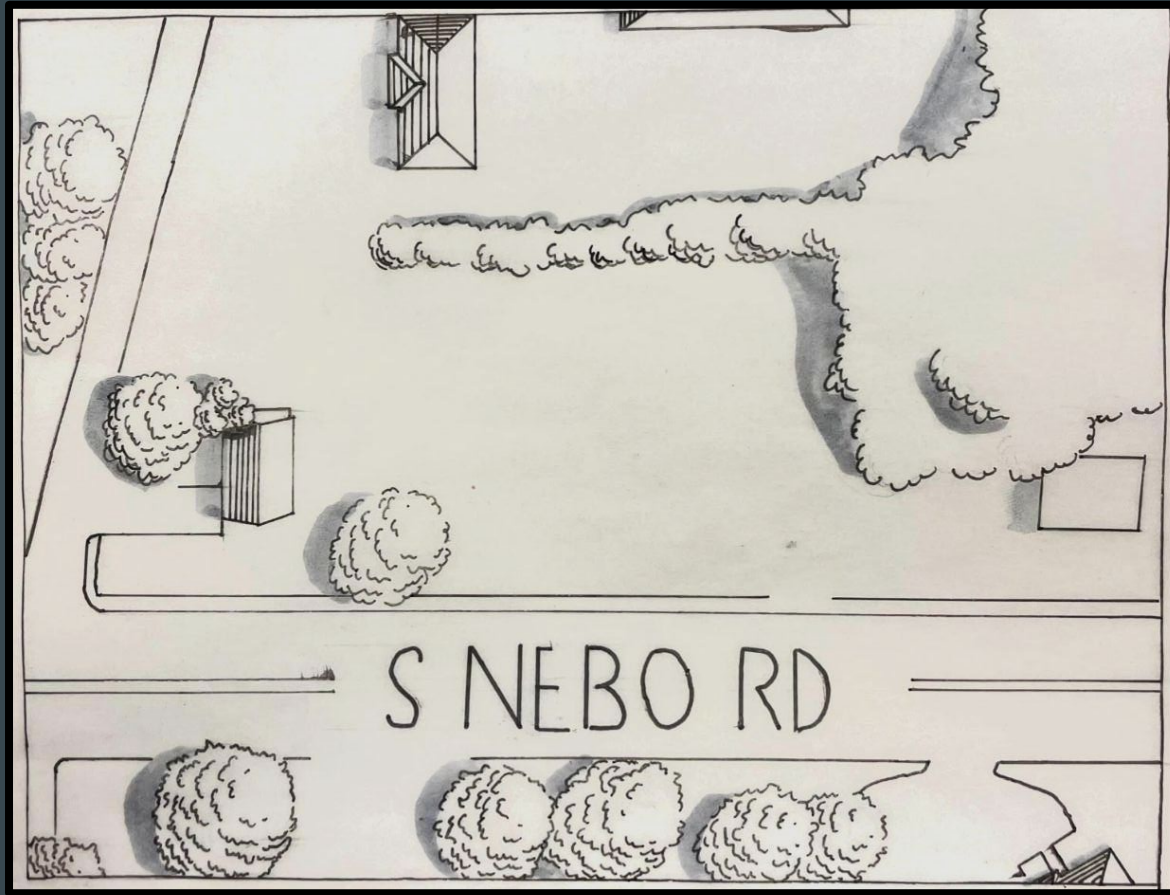
LISTED: FIRST BUBBLE DIAGRAM



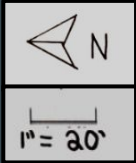
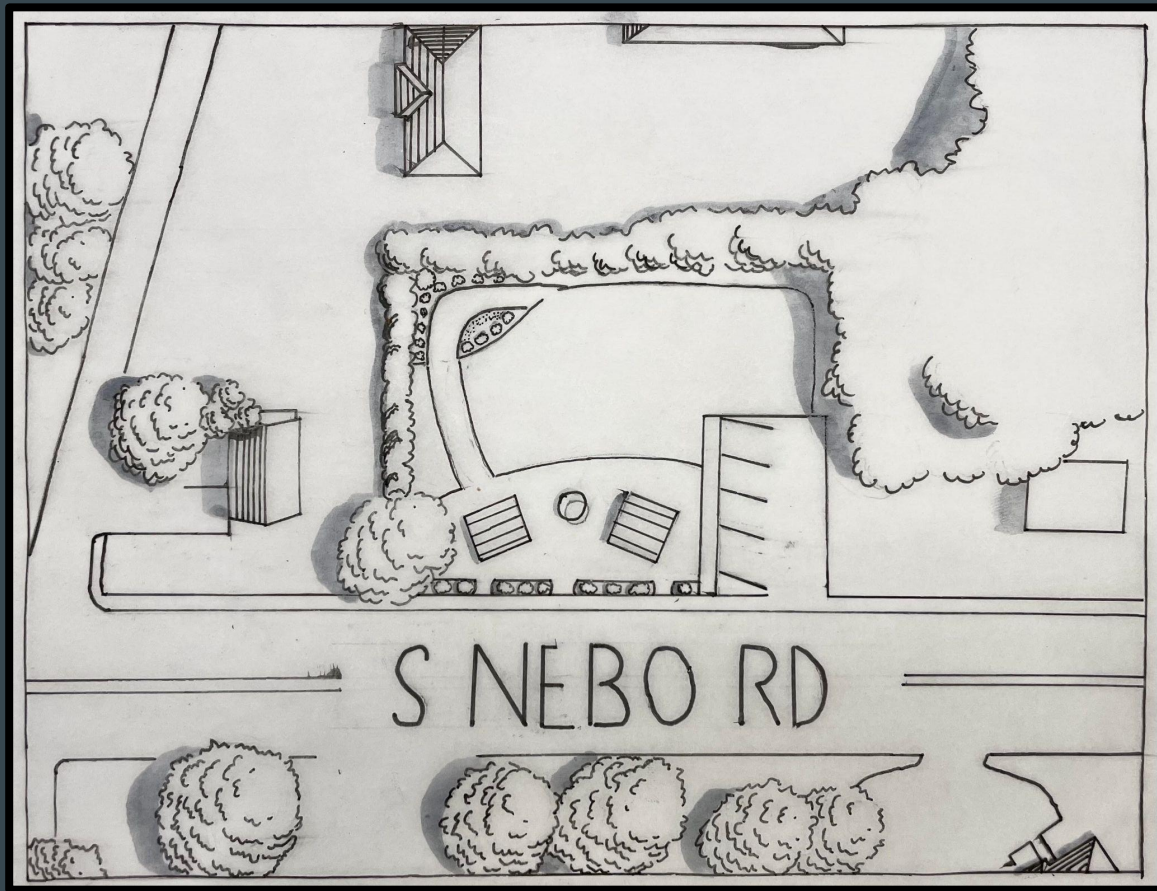
LISTED: SECOND BUBBLE DIAGRAM



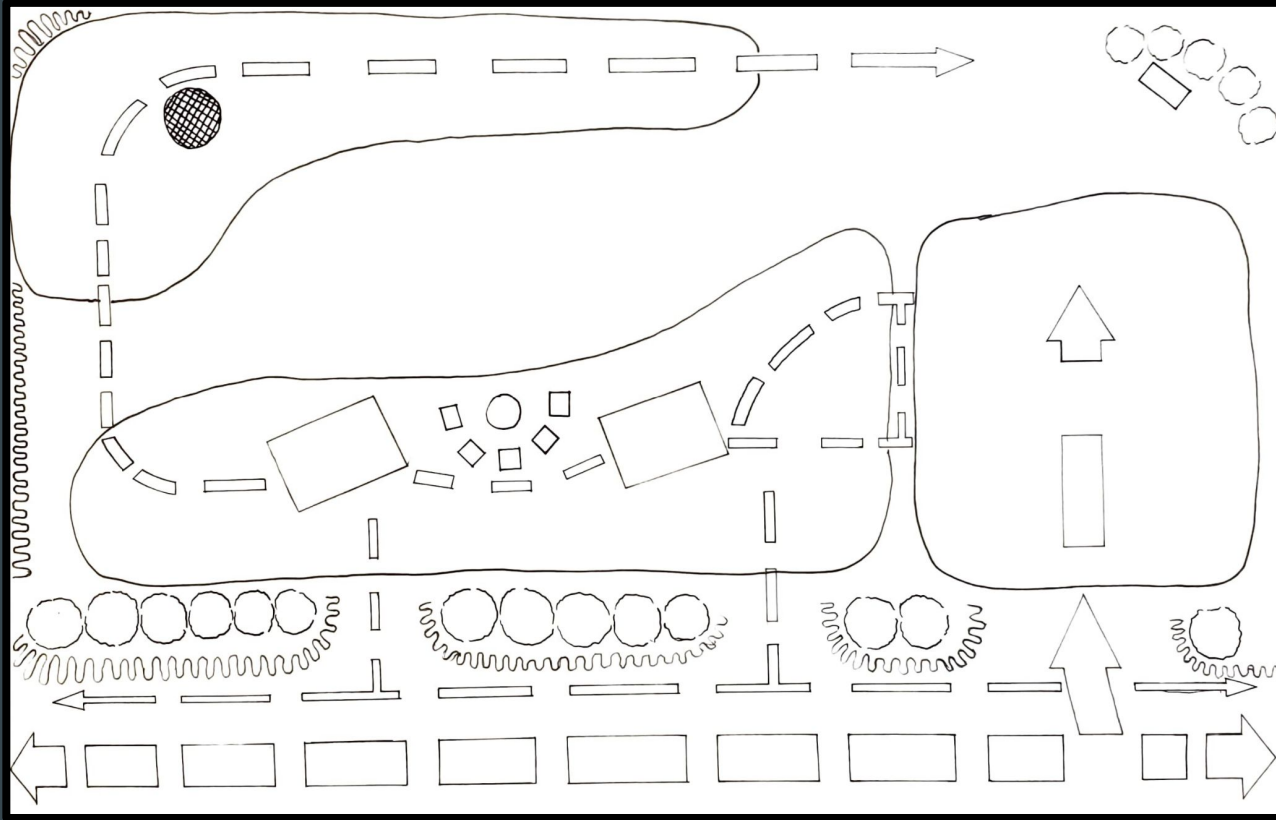
LISTED: FINAL BUBBLE DIAGRAM






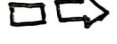

Before Aerial Plan View



After Aerial Plan View



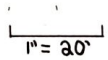
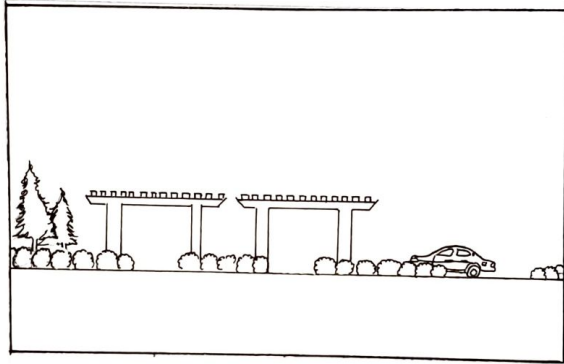
Key

-  - Edges
-  - Nodes
-  - Landmarks
-  - Paths
-  - Districts



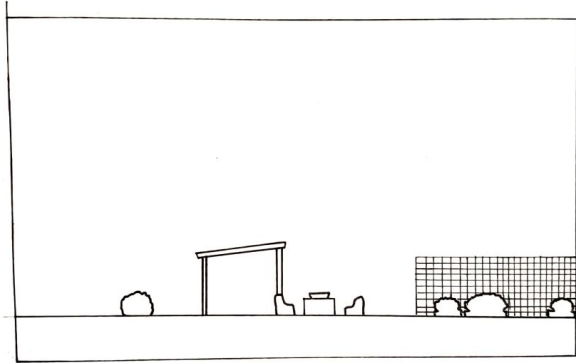
Concept Plan Map

NORTH TO SOUTH ELEVATION



*IMAGE: Terrain Perspective of Main Square
Pegolas*

EAST TO WEST ELEVATION



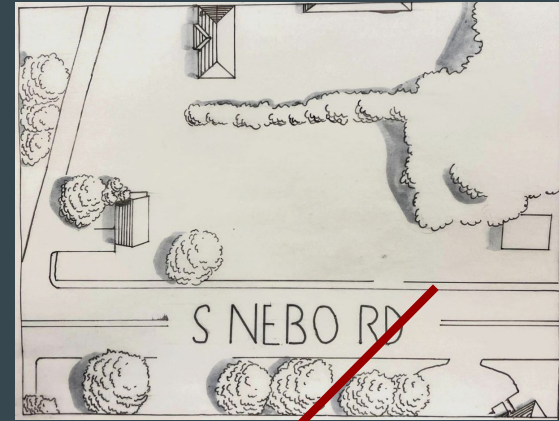
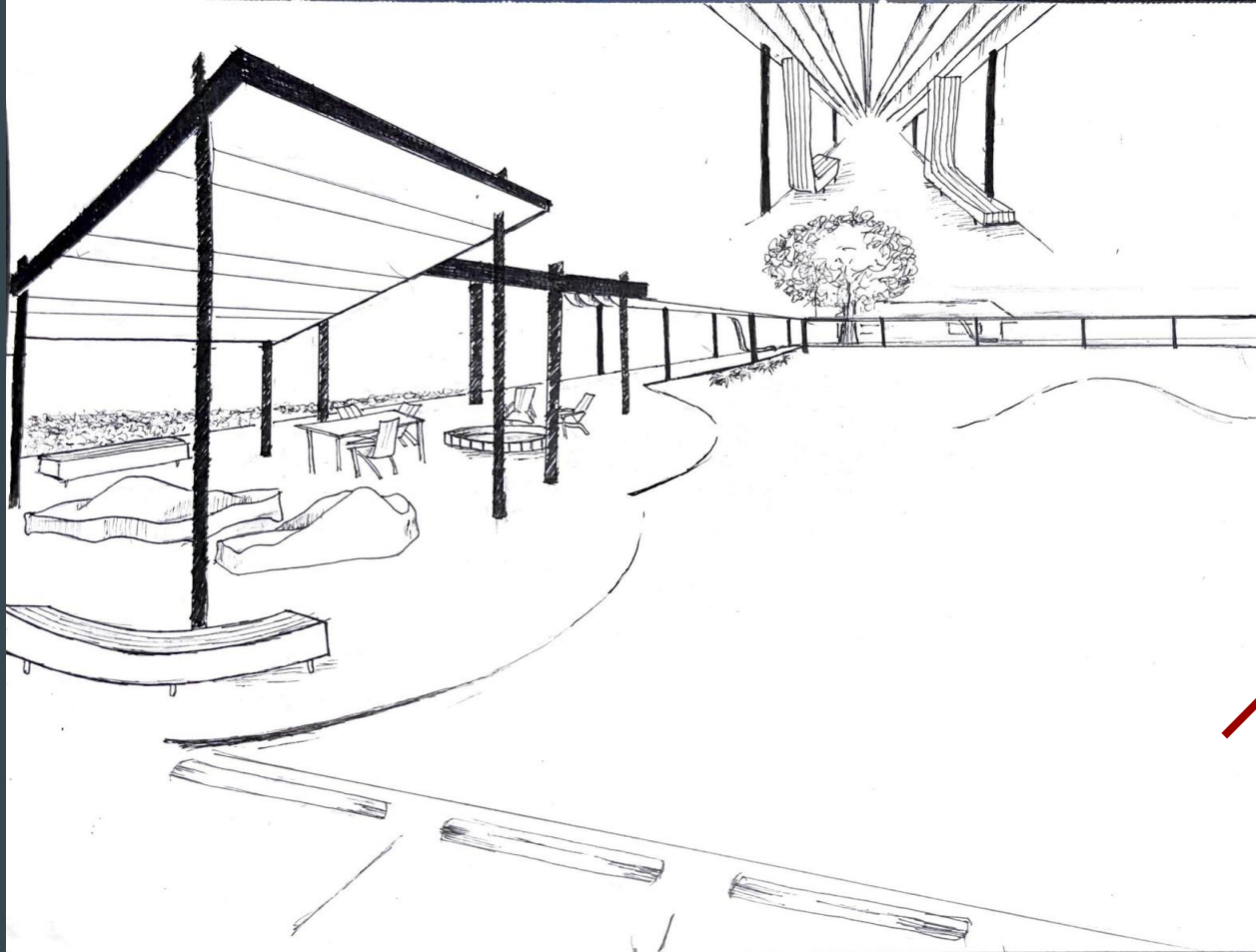
1" = 20'



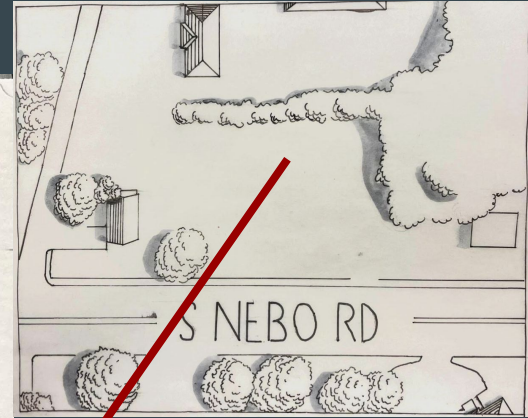
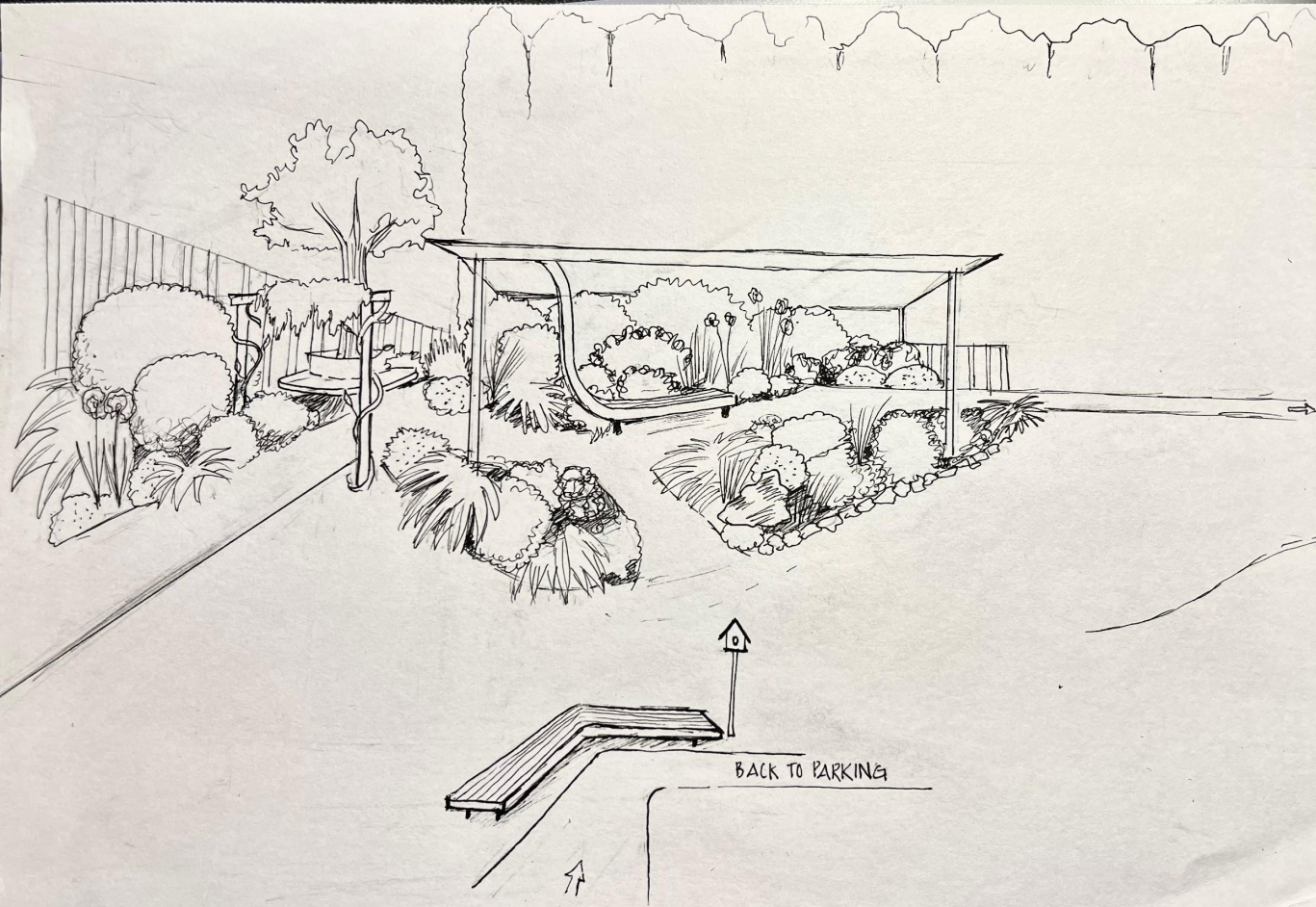
TOP: Ground View of the Main Square

BOTTOM: Image of Seating in Main Square

Perspective 1



Perspective 2



SOURCES

- Google Earth
- PBS documentary: Now entering Yorktown
- Google Maps
- Beacon
- Yorktown Facebook
- Yorktown History Online