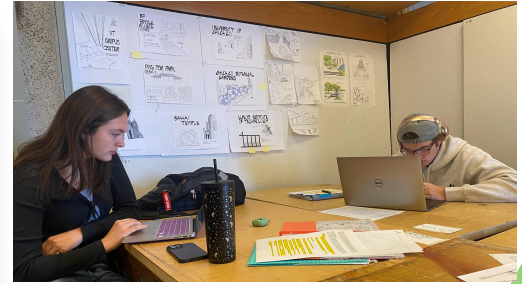




Yorktown Pocket Park

McKenna Scoles, Shanena Knight, Cora Ransbottom, Braxton Ridens, Alex Casas

Who Are We?



You're Invited
TO AN OPEN HOUSE

Monday, September 26 // 10-11:45am
2nd floor of Yorktown Town Hall

*Come meet students from Ball State University's
College of Architecture and Planning and hear the research
they have gathered for a new park in Yorktown.*



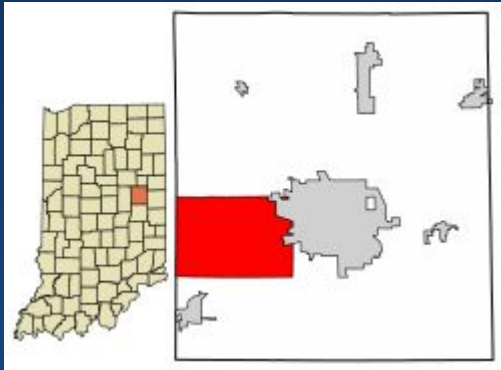
Intro To Place

Welcome to 1100 S Nebo Road!
This site has the potential to bring communities together and make long lasting memories. With multiple neighborhoods close by, this open area is perfect for a communal space.



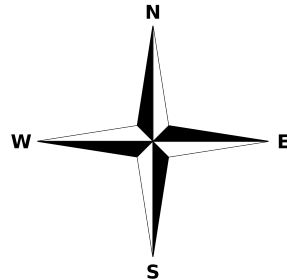
History

Yorktown consists of 11-12 thousand people and is growing and expanding their community. Yorktown was designed in 1837 by Oliver H. Smith who represented Indiana in the U.S. Senate and was a member of the Committee on Public Lands. Smith based his thinking around implementing railroads in Yorktown. By the early 1850's Yorktown was connected to Indianapolis through the tracks. In the past decade, more than a dozen new residential and three new commercial subdivisions have established themselves here. Yorktown is just getting started and has big future plans.



Site Pictures

North



Base Map

East



South

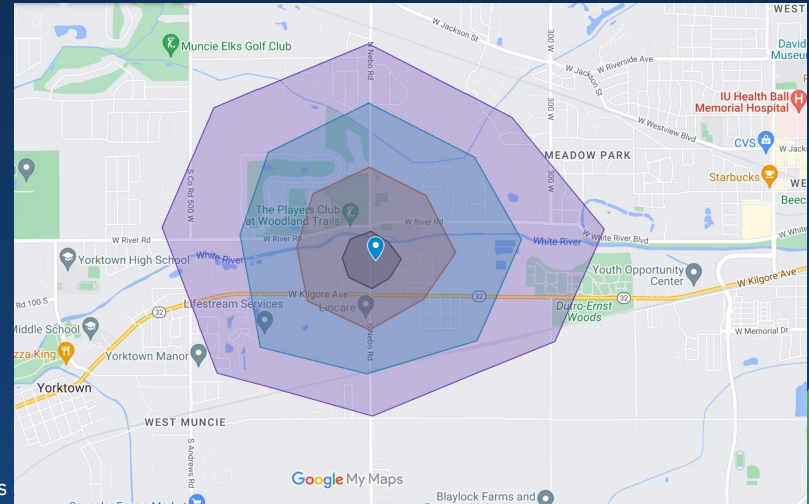


West



Walk Amenities

- Within 5 minutes- McDonald's, Marathon Gas Station, White River, Friendly Package Liquors & Burger King
- Within 10 minutes- Subway & The Players Club at Woodland Trails
- Within 15 minutes- Dollar General & Paradise Bar & Grill
- Within 20 minutes- IU Yorktown Pharmacy



Grey: 5 mi radius
Orange: 10 mi radius
Blue: 15 mi radius
Purple: 20 mi radius

Adjacent Pictures



Nearby Pictures



Dark Star Printing & Embroidery Shop is at the end of Nebo St.

Site Analysis Checklist

Site Features

- No Existing Parking
- No Existing Amenities
- No Existing Water Access
- No Existing Comfort
- Bad View:
 - Nothing exist here
 - There are several electrical lines
 - Not much nature or beauty
- Good View:
 - The site is connected to a neighborhood
 - Can be community friendly

Site Contextual Connections

- Existing Schools Close By
- Existing Paths
- Existing Residential Areas
- No Existing Greenways, Parks, or Pedestrian Walkways
- Near a Busy Road
- Existing Bridge
 - Across White River
- Access to Churches, Fast Food, Golf Courses, and Retail Areas

Map Elements

- Existing Soft Edges
 - Tree Barriers
- Existing Hard Edges
 - Residential Areas
 - Sidewalks
- Steep Areas
- High & Low Slopes
- Existing Landmark:
 - White River
- District Location:
 - Yorktown & Muncie

Site Analysis Checklist

Vegetation & Hydrology

- Existing Solar Movement
- Existing Plants & Trees
- No Existing Habitats
- Existing Sunlight
 - Lots of Sunshine
- Existing Shadow Areas
 - Located in front of the tree barrier
- Existing Water Line
- Existing Areas

Physical Site Elements & Utilities

- Existing Residential Areas
- No Existing Bike Rails
- No Existing Road Signs
 - Including Wayfinding Directions
- Existing Path: Sidewalks
 - Connects the neighborhood
- Existing Fire Hydrant
 - Across the Street
- Existing Electrical Lines

SWOT ANALYSIS

SITE: 1100-1108 South Nebo Road Yorktown, Indiana 47304



STRENGTHS

- Surrounded by residential
- Near commercial
- Good visibility
- Good location (Kilgore + Nebo intersection is 0.2 mi. South of the site)
- Good communication between locals and future development/planning processes
- Strong local trail network



WEAKNESSES

- No cross walk
- No nearby bus stops
- No place to put trash
- No nearby parking



OPPORTUNITIES

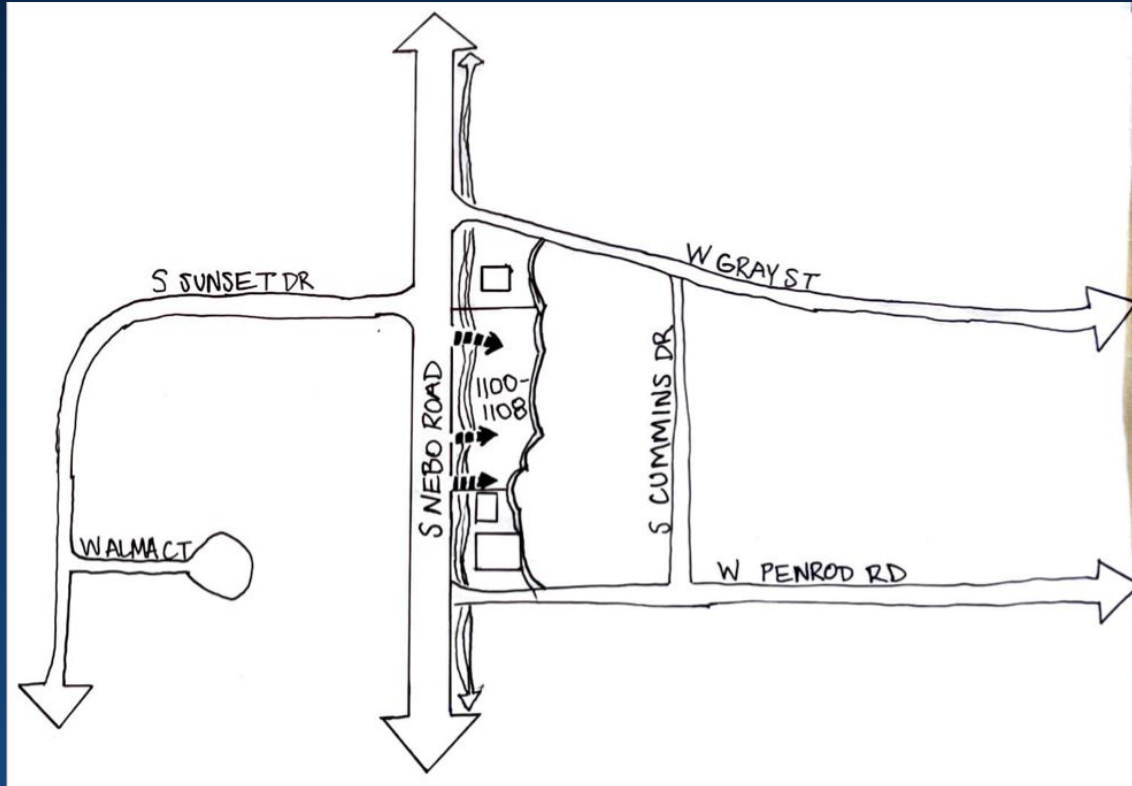
Bradford Park Bible Church (3 min.), McDonald's/Burger King/Subway (5 min.), The Players Club (7 min.), Foster's Flowers and Gifts (7 min.), Lowry's Homemade Candies (7 min.), Heritage Hall Christian School (9 min.), Grace Baptist Church (10 min.), Dollar General (10 min.), Paradise Bar and Grill (15 min.), Colonial Apartment (22 min.), Yorktown High School & Middle School (39 min. walk; 10 min. bike), First Free-Will Baptist Church (20 min.), Dutro-Earnst Woods (20 min.)



THREATS

- Electrical lines
- Busy street of Nebo (40 MPH)
- Total square feet is 0.52 acres

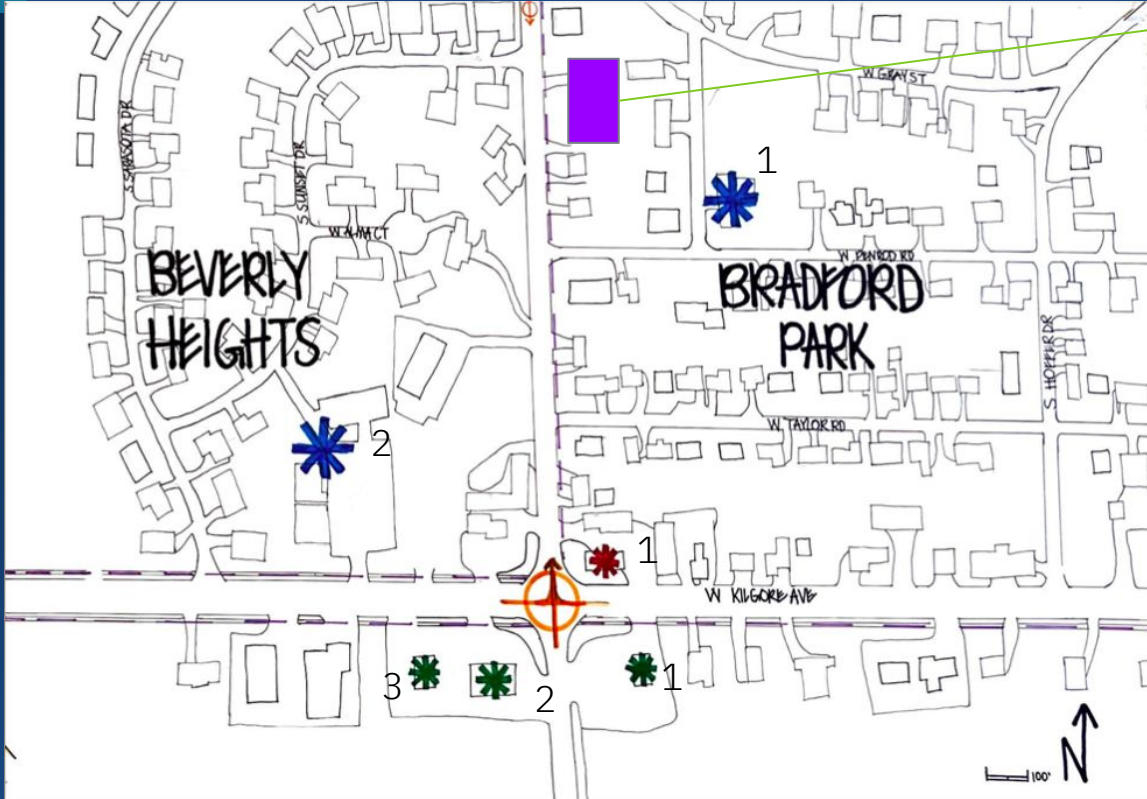
Conceptual Diagramming



1" = 100'

Context Map

Pocket Park Site



- Landmarks
- Blue : Church
 - 1 - Bradford Park Bible Church
 - 2 - West Side Church of Christ
 - Green : Food
 - 1 - McDonalds
 - 2 - Burger King
 - 3- Subway
 - Red : Gas Station
 - 1 - Marathon Gas
 - Purple Lines
 - Sidewalk/Pedestrian movement

Observation Suggestions

Water: How will the waterline work for this park?

- Can it provide water for installed restrooms and water fountains?
- How much can the waterline support if water features are added?

Climate: Is there a way to increase shade? How will we get rid of extra water if it storms?

- Where will the water go to prevent flooding in the streets and backyards?

Biological: How will we prevent kids from running in the street? Are the plants and trees on the site safe for children?

- Reduce speed limit.
- Identify and remove all dangerous life forms.

Cultural: How will we make this space appealing for all age groups?

- Has something for everyone.

Inspirations/Notes



- Artist Shawn Dunwoody turns Rochester MLK Park into giant chalkboard.

Inspirations/Notes

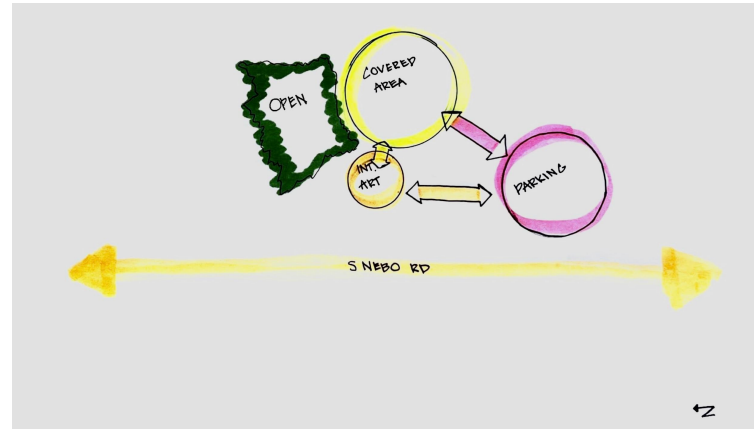
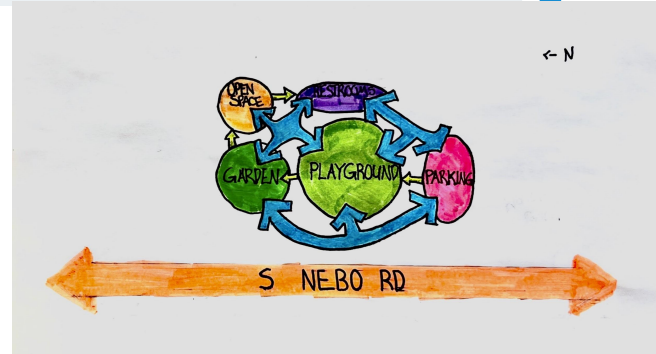
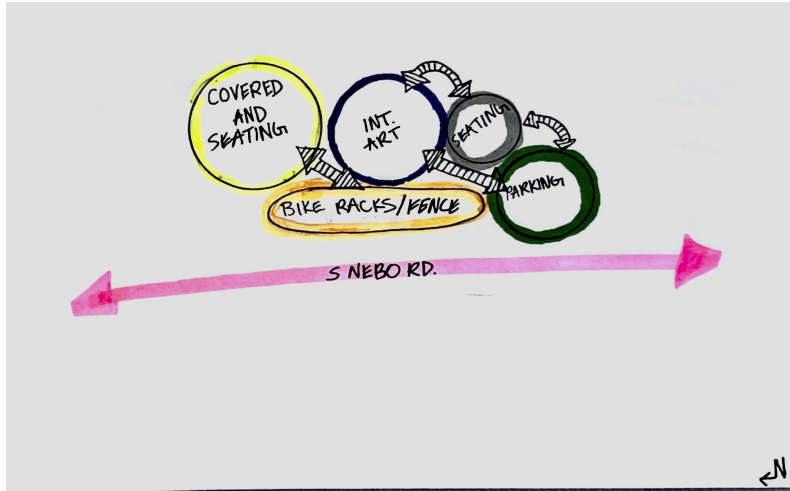


- Pavilion

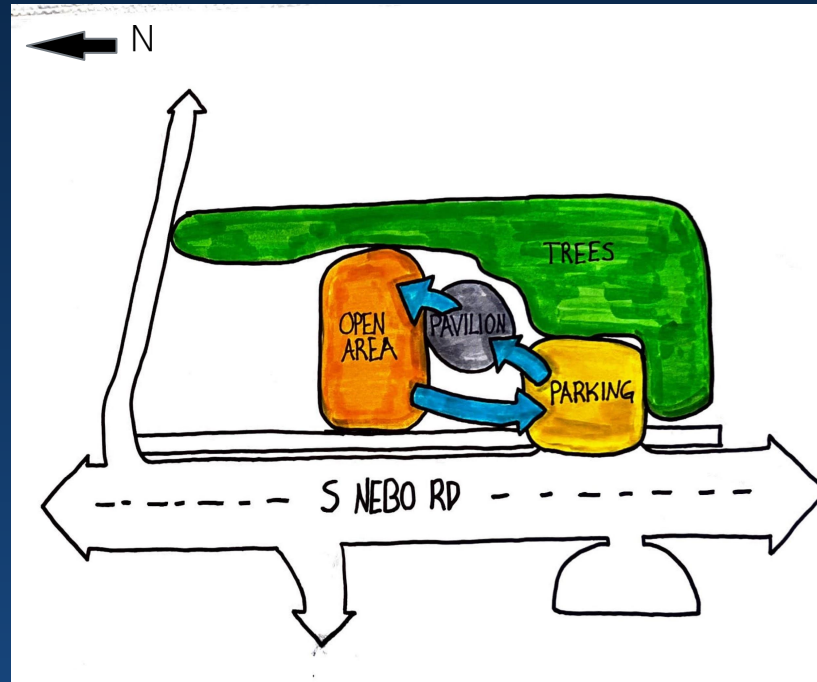


- Downtown Yorktown

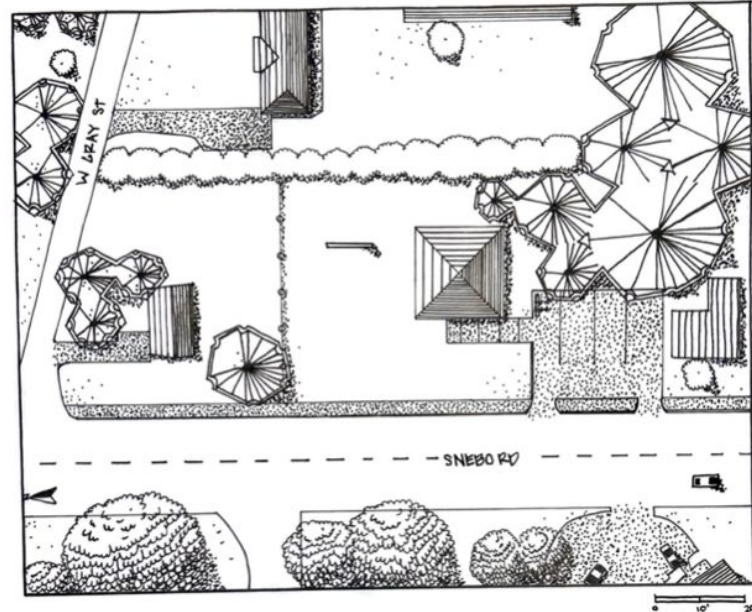
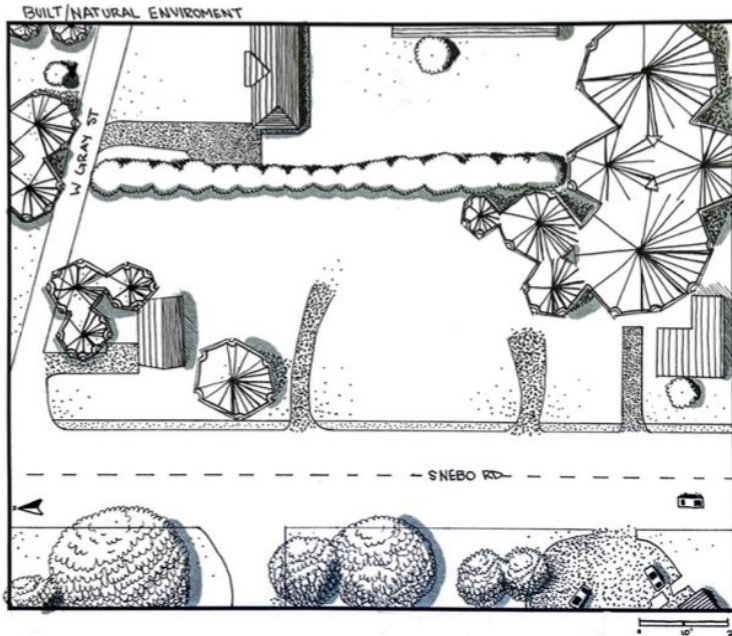
Bubble Diagrams



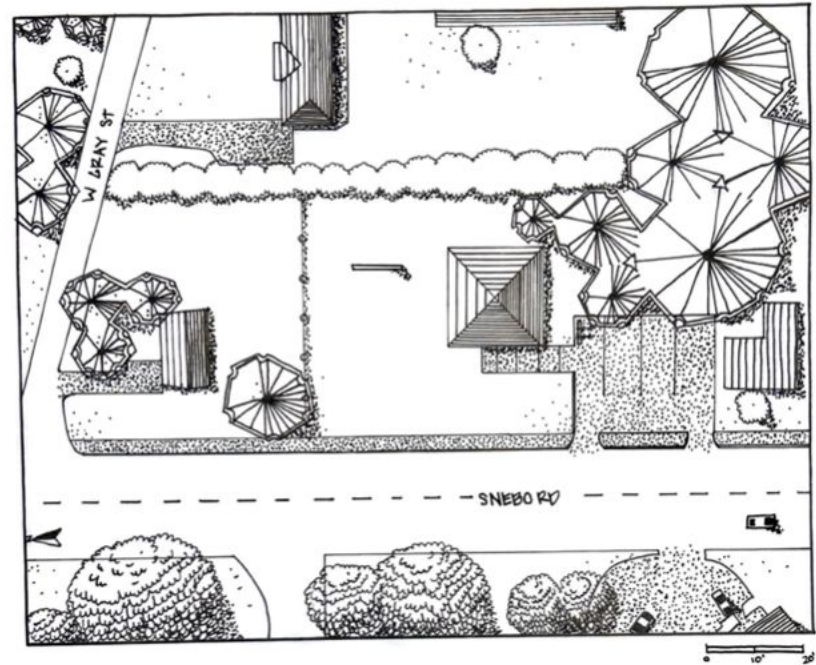
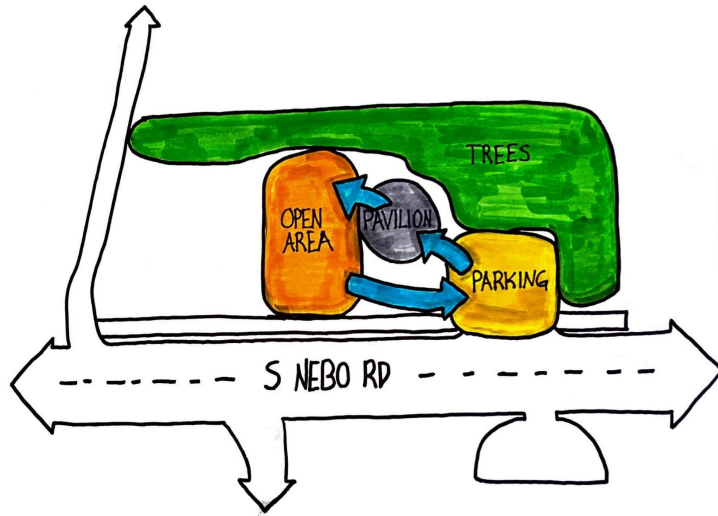
Final Concept



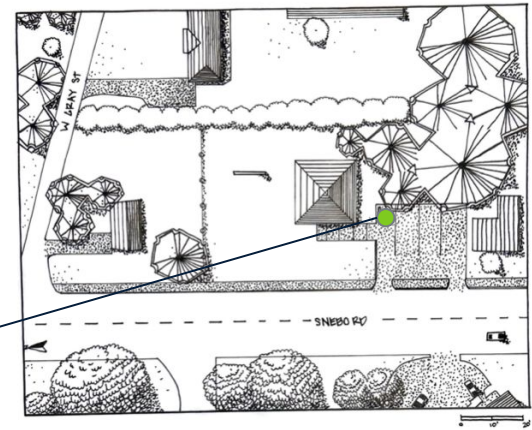
Before & After Refined Plan View



After Refined Plan View + Bubble Diagram



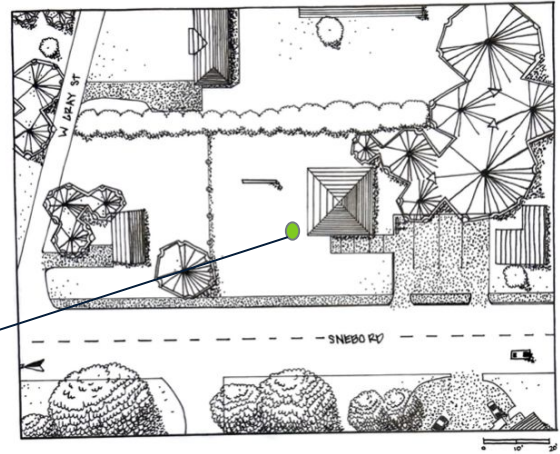
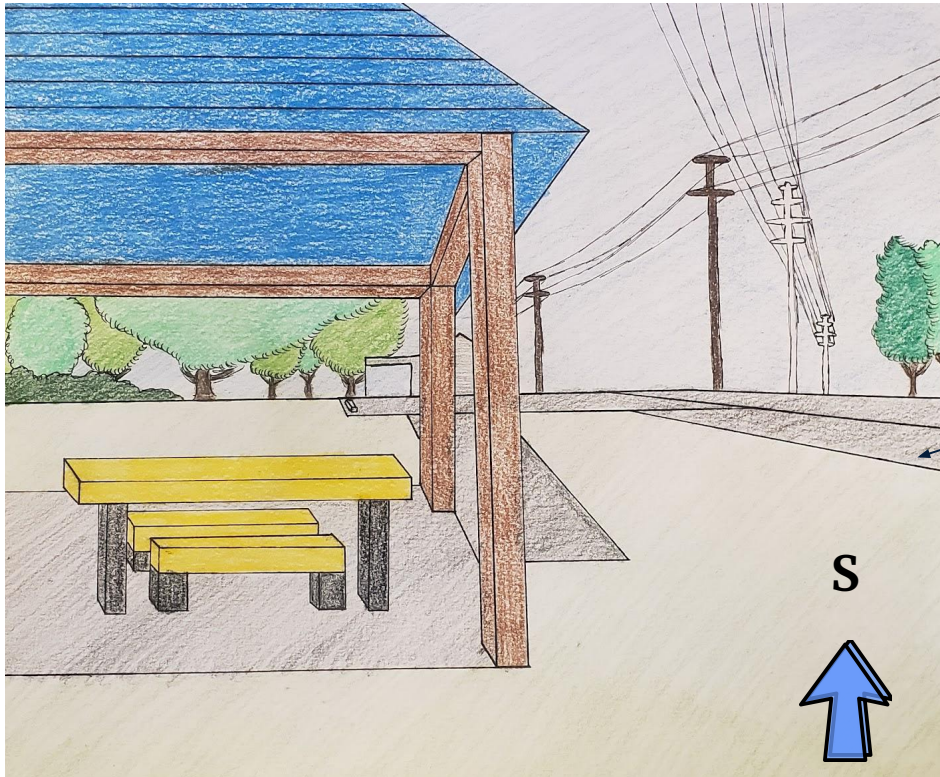
Perspective One



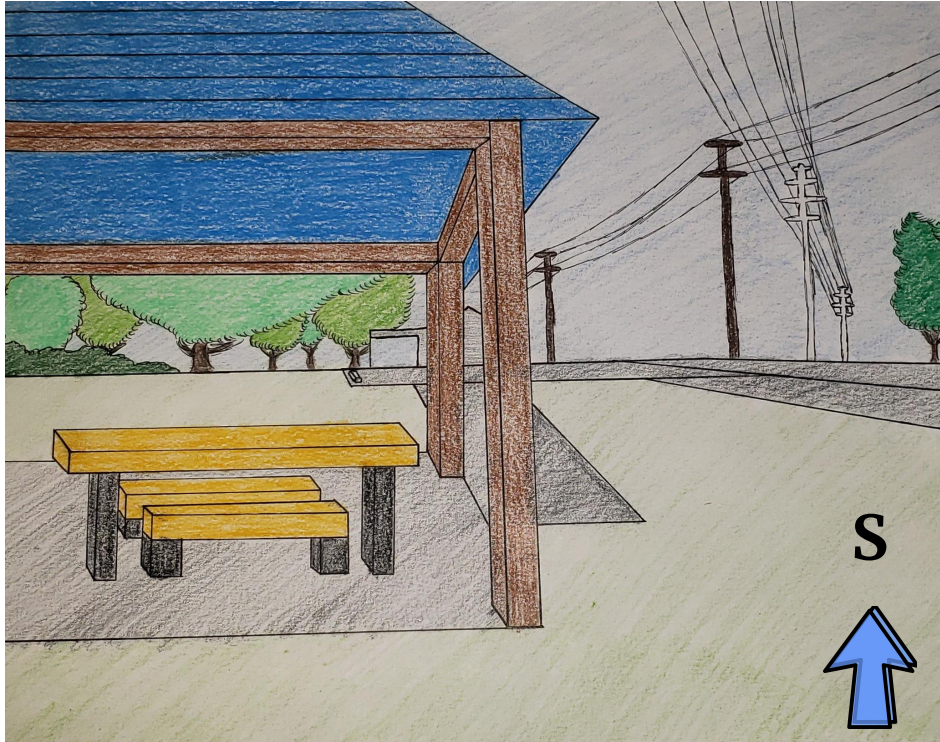
Perspective One Comparison



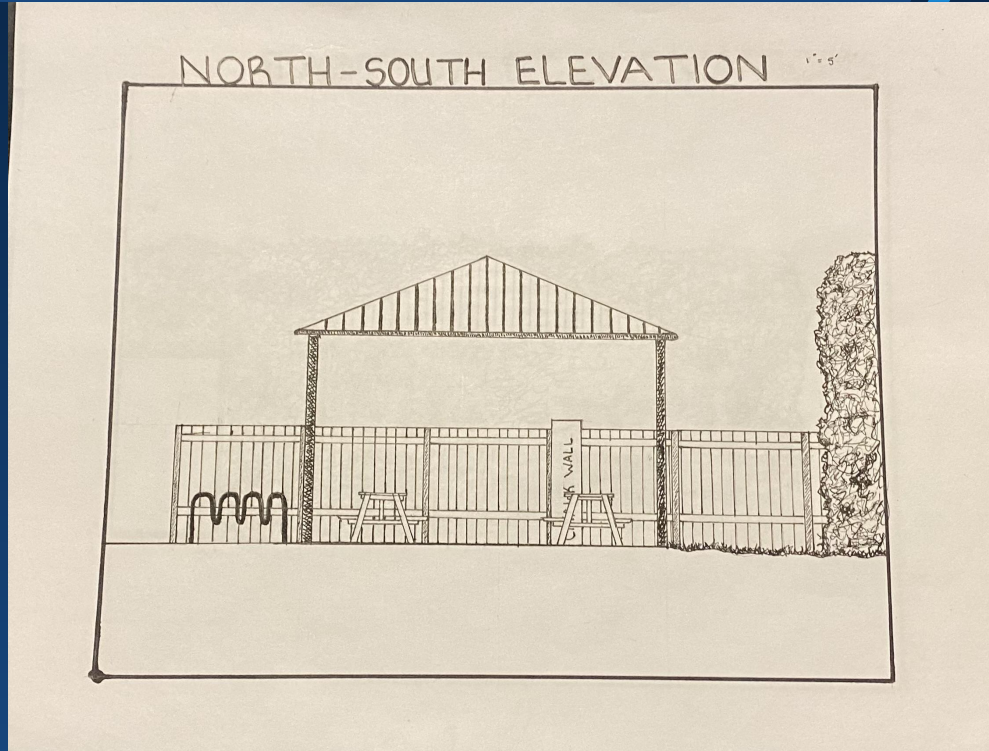
Perspective Two



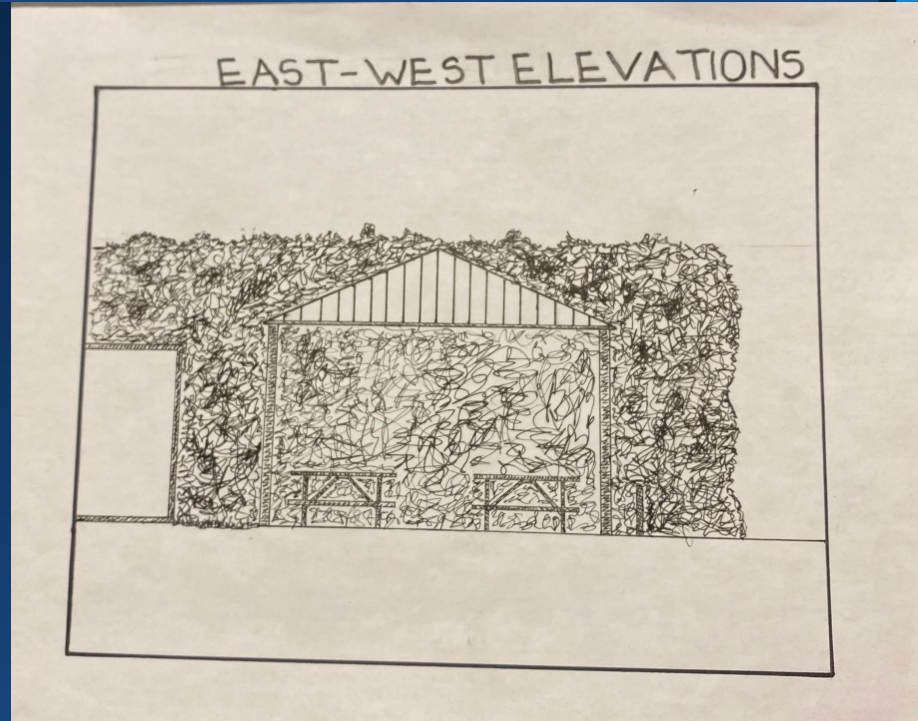
Perspective Two Comparison



Elevation (North to South)



Elevation (East to West)



Sources

Book Sources:

- “Landscape Graphics,” Grant W. Reid Fasla

Website Sources:

- Now Entering...Yorktown: <https://youtu.be/3OMIod1Z9sY>
- Google Maps: <https://www.google.com/maps>
- Google Earth: <https://earth.google.com/web/>
- Beacon Maps: [Beacon \(schneidercorp.com\)](https://www.beaconmaps.com/)
- National Aspirations, Financial Chicanery and the Ultimate Destiny of the Bee Line Railroad: <https://blog.history.in.gov/tag/oliver-h-smith/>

The background features a dark blue gradient with several diagonal stripes in shades of light blue and lime green, creating a modern, geometric aesthetic.

Thank You!