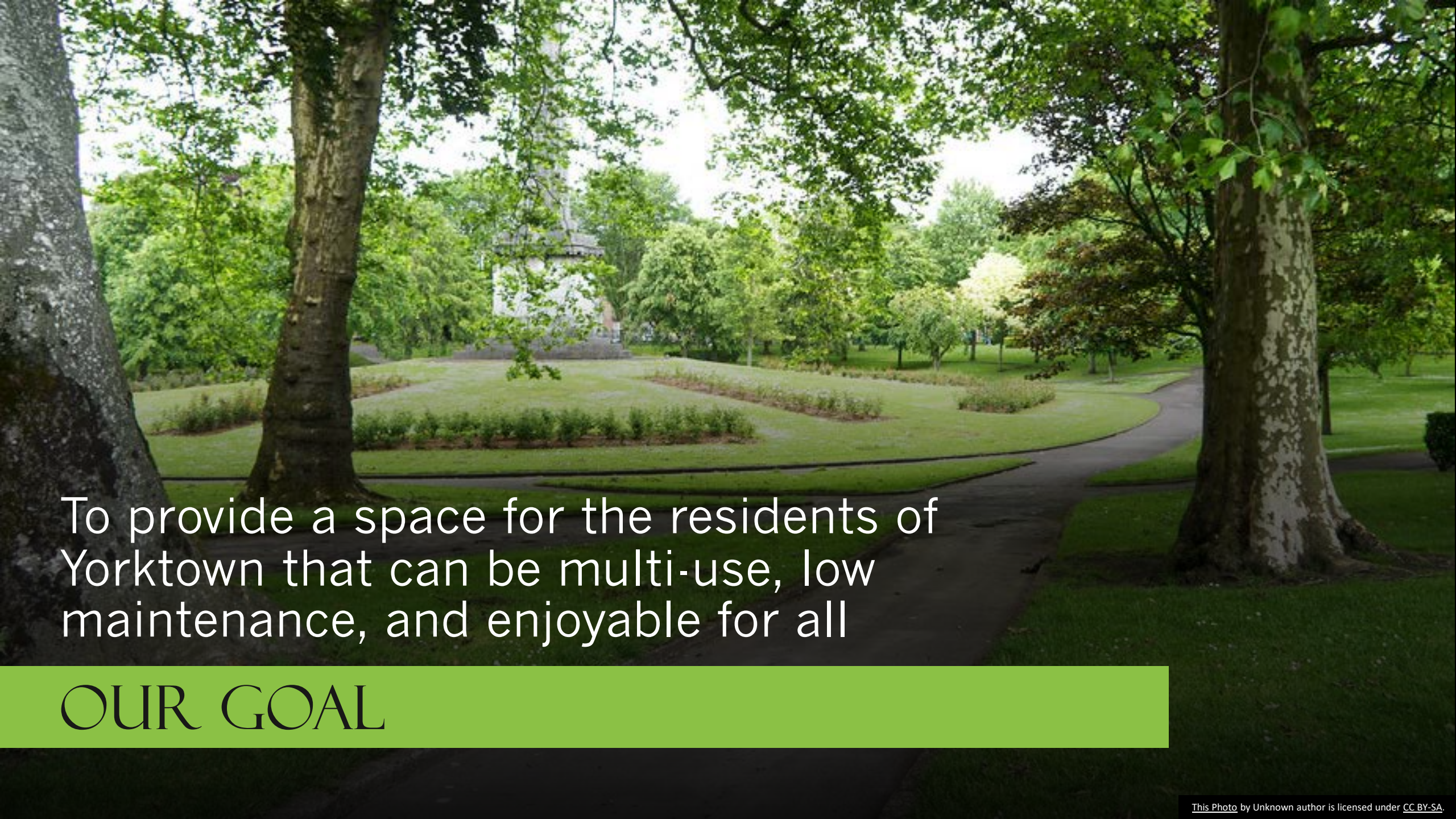


YORKTOWN SITE DEVELOPMENT

By Keagan Powell, Aiden Snedigar, Anna Ware, Noah Piliponis, and
Carlos Salgado-Quintana

Team Fruits and Veggies at Work



A photograph of a park with a winding path, trees, and a building in the background. The path is paved and curves through a grassy area with several trees. In the distance, a white building with a tower is visible through the trees.

To provide a space for the residents of Yorktown that can be multi-use, low maintenance, and enjoyable for all

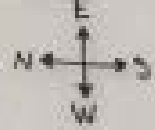
OUR GOAL




- Location: 1100 S Nebo St, Yorktown, Indiana
- Lots of untapped potential

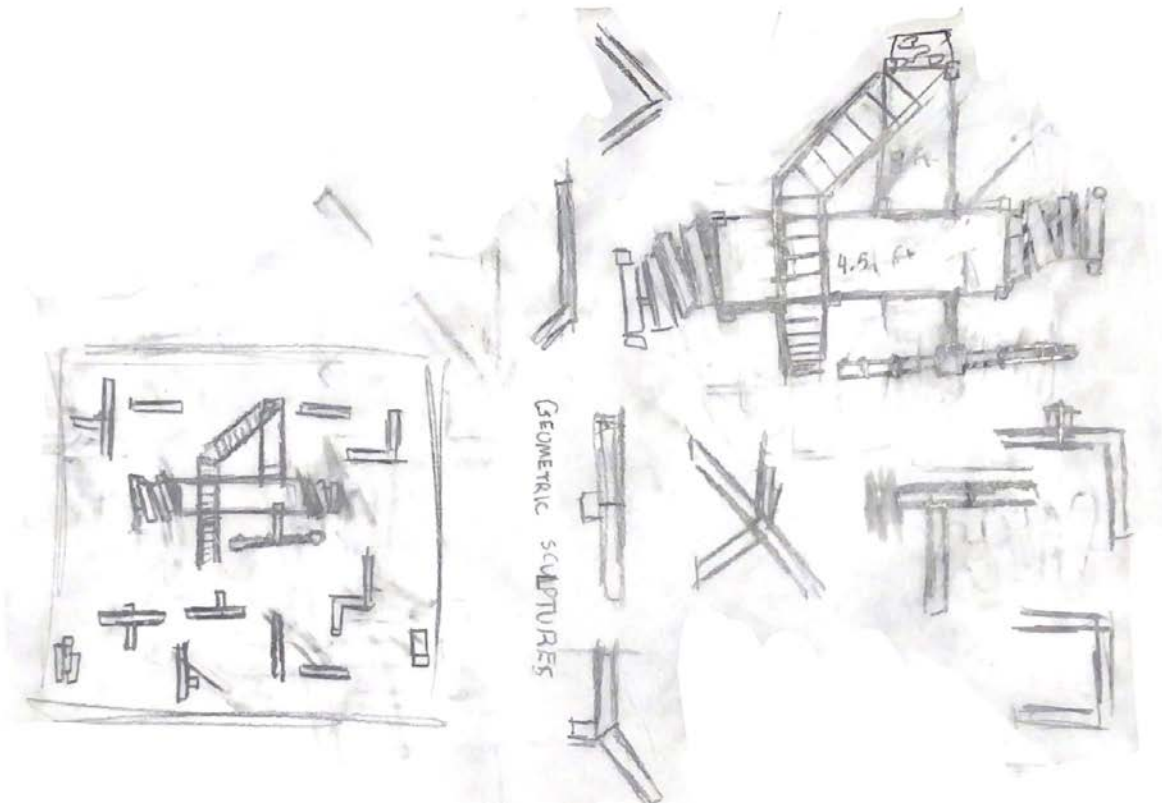
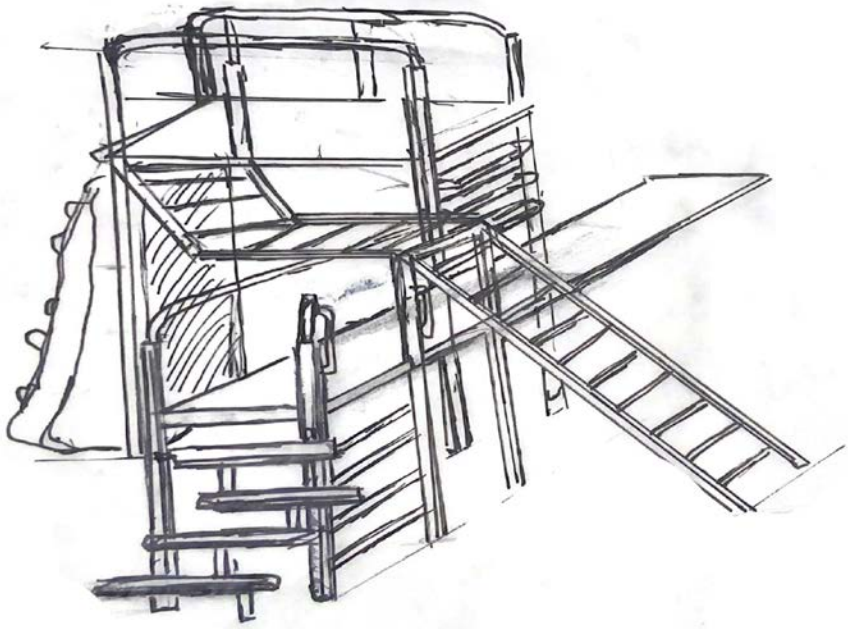
KEY

- ROADS (ROADS) →
- NODES ●
- EDGES —
- DISTRICTS [shaded green]
- LANDMARKS *
- SITE BOUNDARIES []





Strengths	Weaknesses	Opportunities	Threats
Surrounded by residents	No cross walk across Nebo	Lots of nearby locations	Electrical lines
Near commercial businesses	No public transportation	Bradford church	Nebo's speed limit (40 mph)
Strong local trail	No nearby trash/recycling	McDonald's	Total sq ft .52 acres
Fairly fertile soil for plant life		Burger King	
Good visibility			



Seating

- An interactive seating area for the adults visiting the park as well as the kids

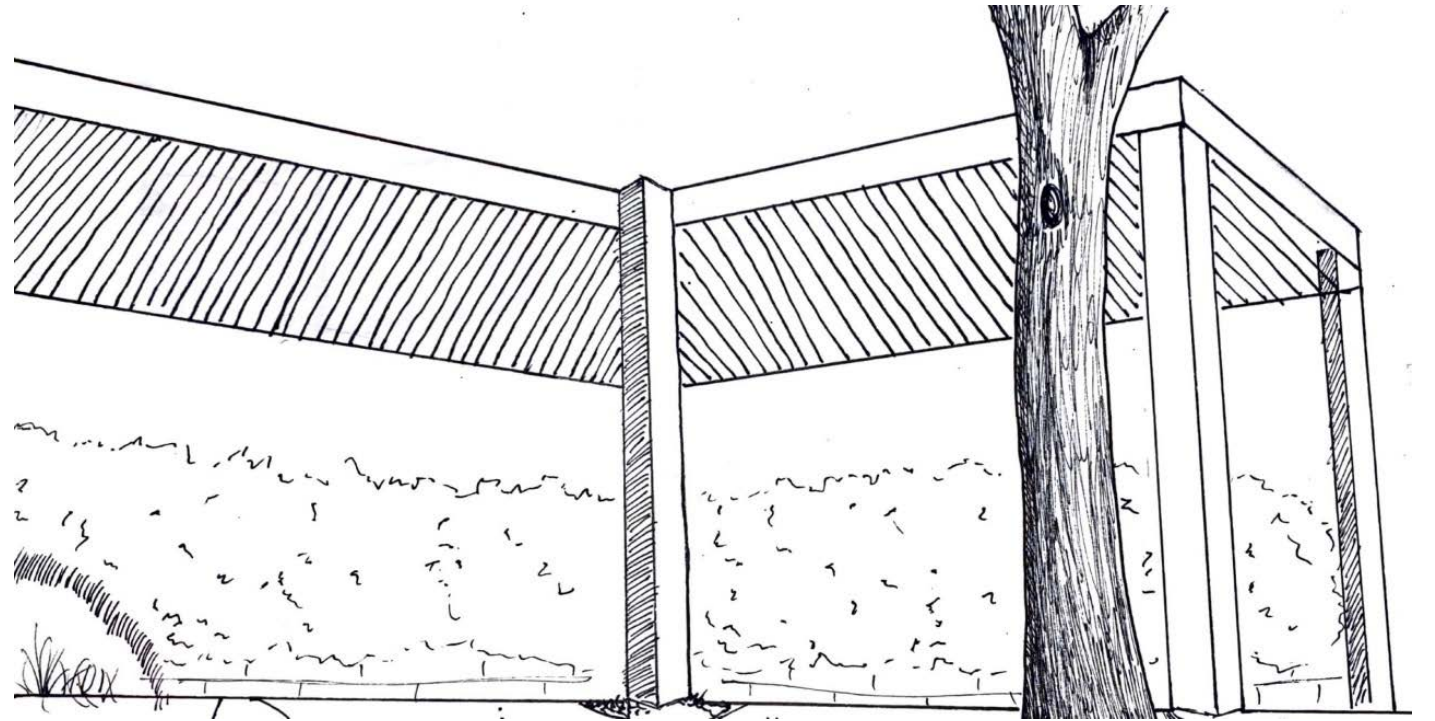
Vertical Garden Walls

- Privacy
- Pleasant to look at
- Creates a nature scape



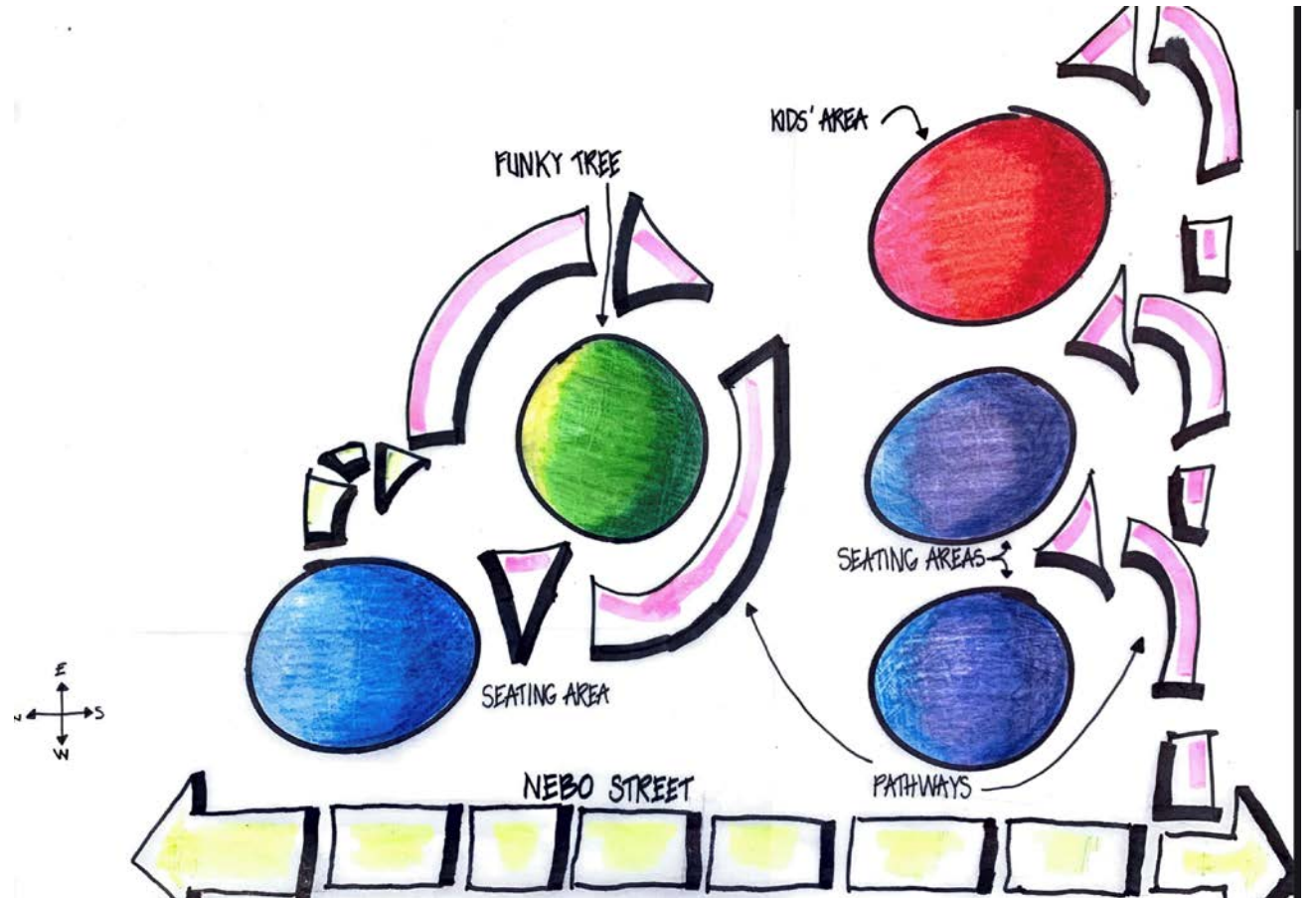
Pavillion

- Paved seating area
- Shelter



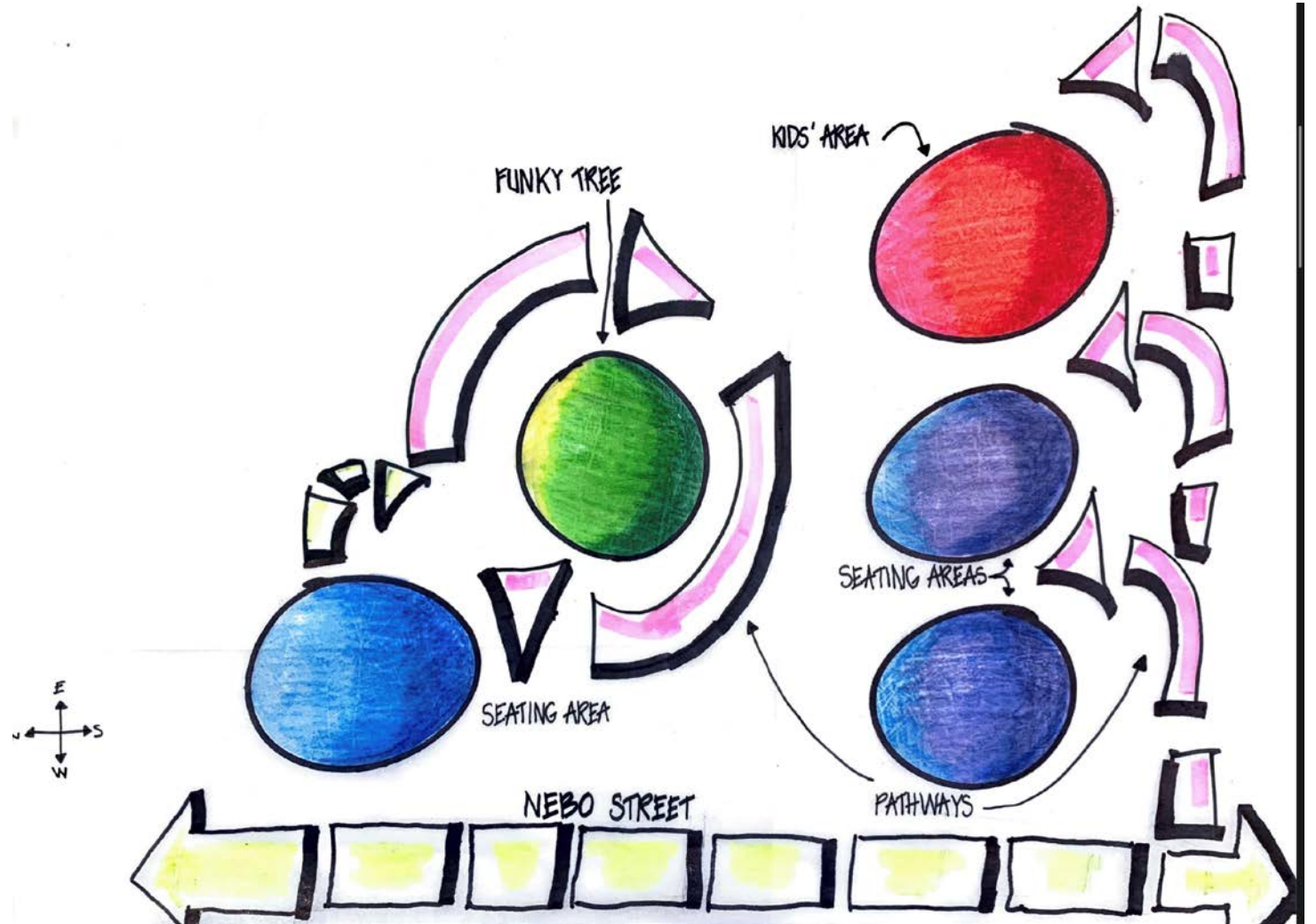
Concept 1

- This concept focuses on diverse functionality. There are seating areas that are geared toward adults and there is also an area for children to play in the eastern corner.



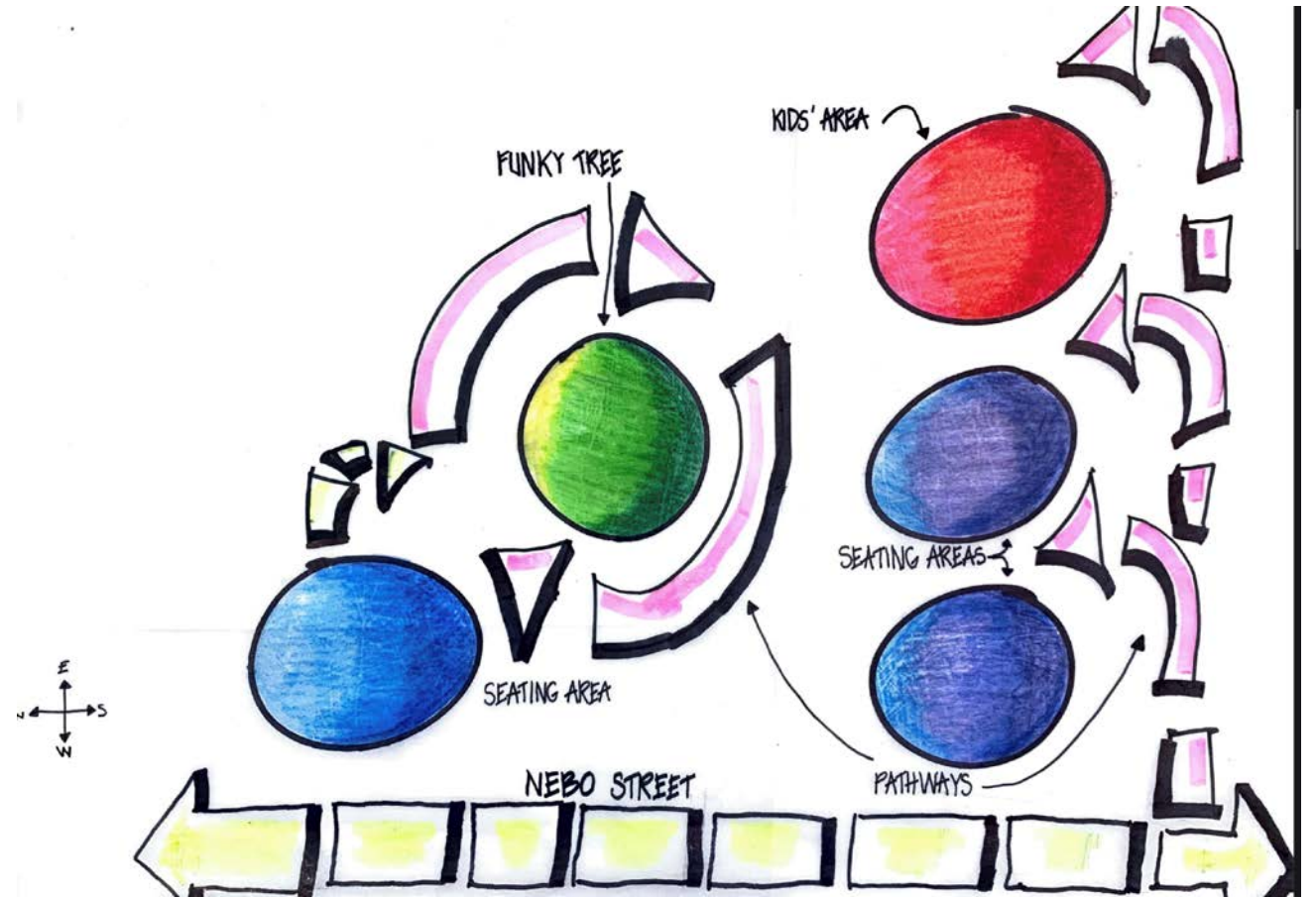
"A little bit of everything"

- A place for everyone
- Plenty of seating
- Play set for younger kids
- Centralized tree to act as the focal point of the park



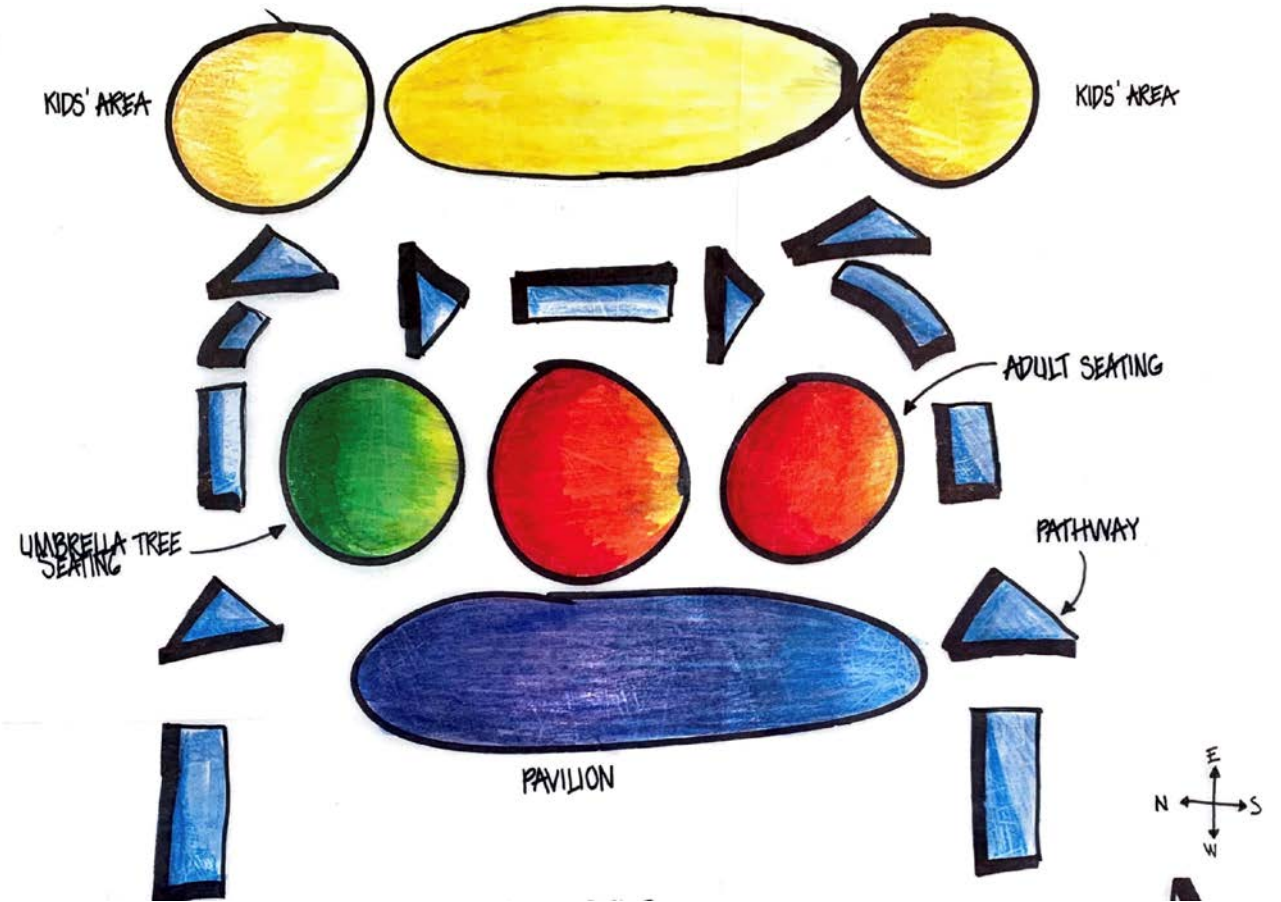
Flaws

- Too busy
- Not enough green space
- Unorganized
- Too specialized



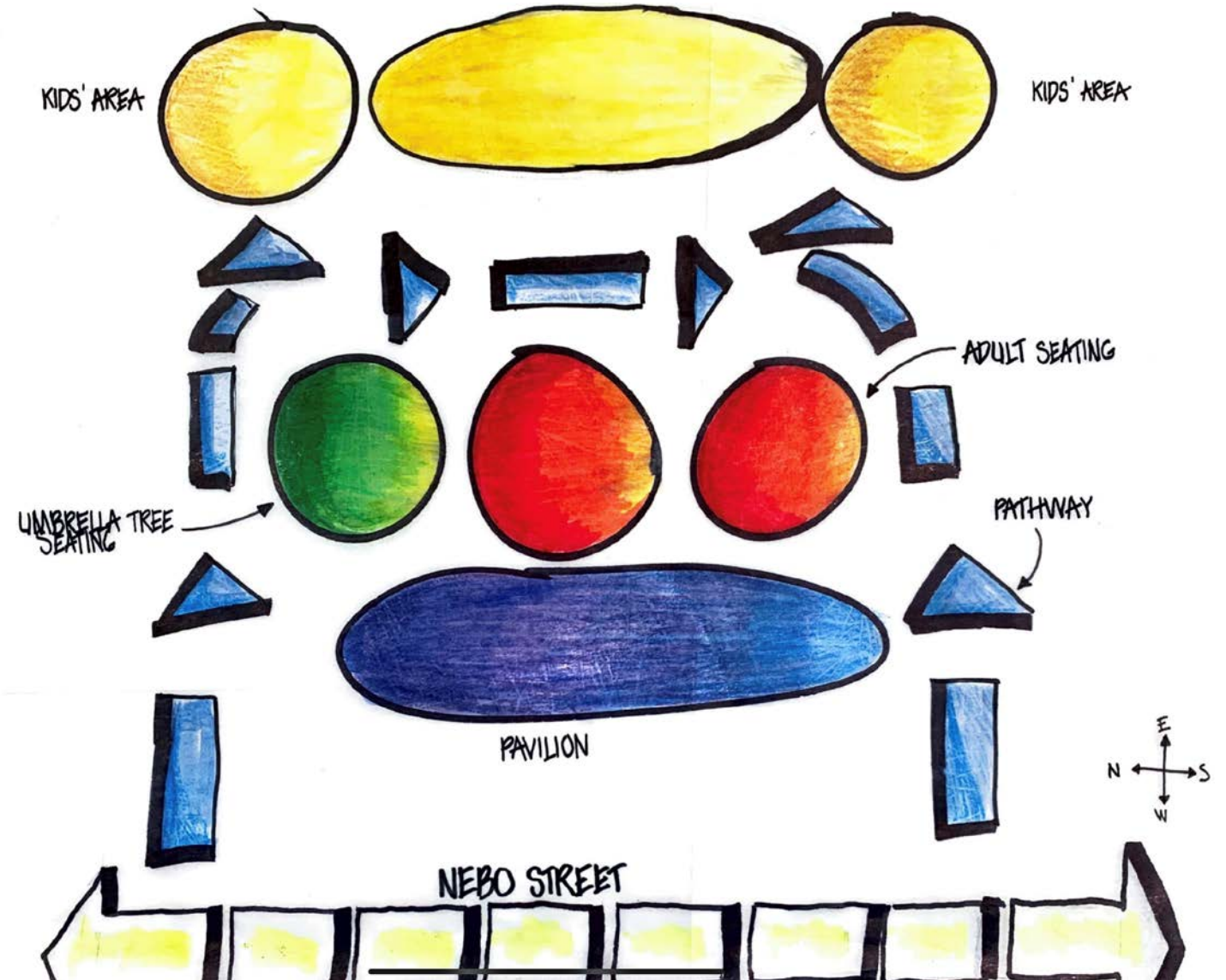
Concept 2

- This design focused on the kids having a large play area with swings and slides galore, as well as tables with umbrellas for lunch or snacks.



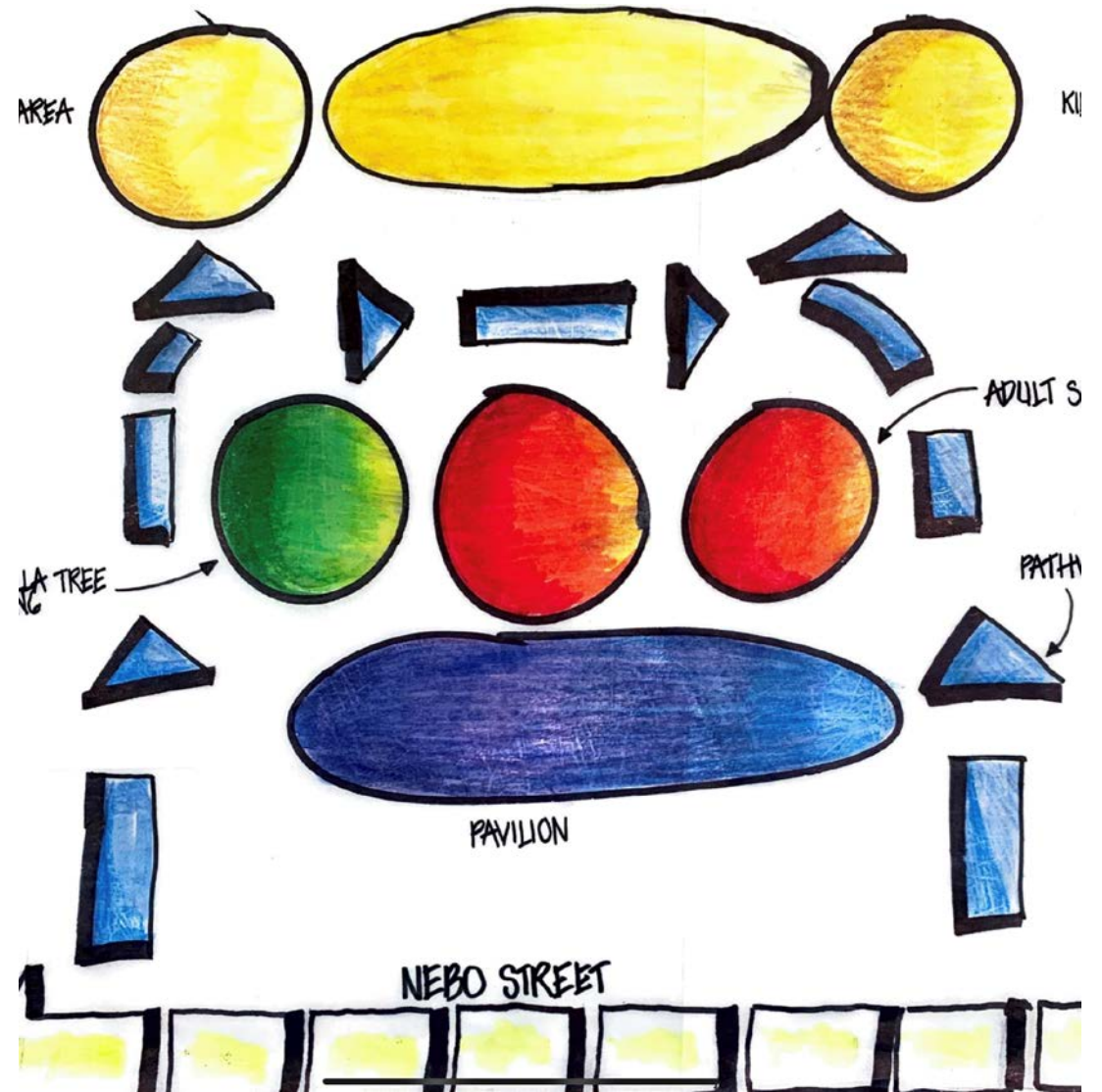
Kid Orientated Design Details

- Child focused
- Large interactive seating area for adults
- Tables with umbrellas on the left
- Swings for the adults
- Large play area with slides, swings, places to climb, etc.
- Focus placed on the back half to ensure kids stay away from the road



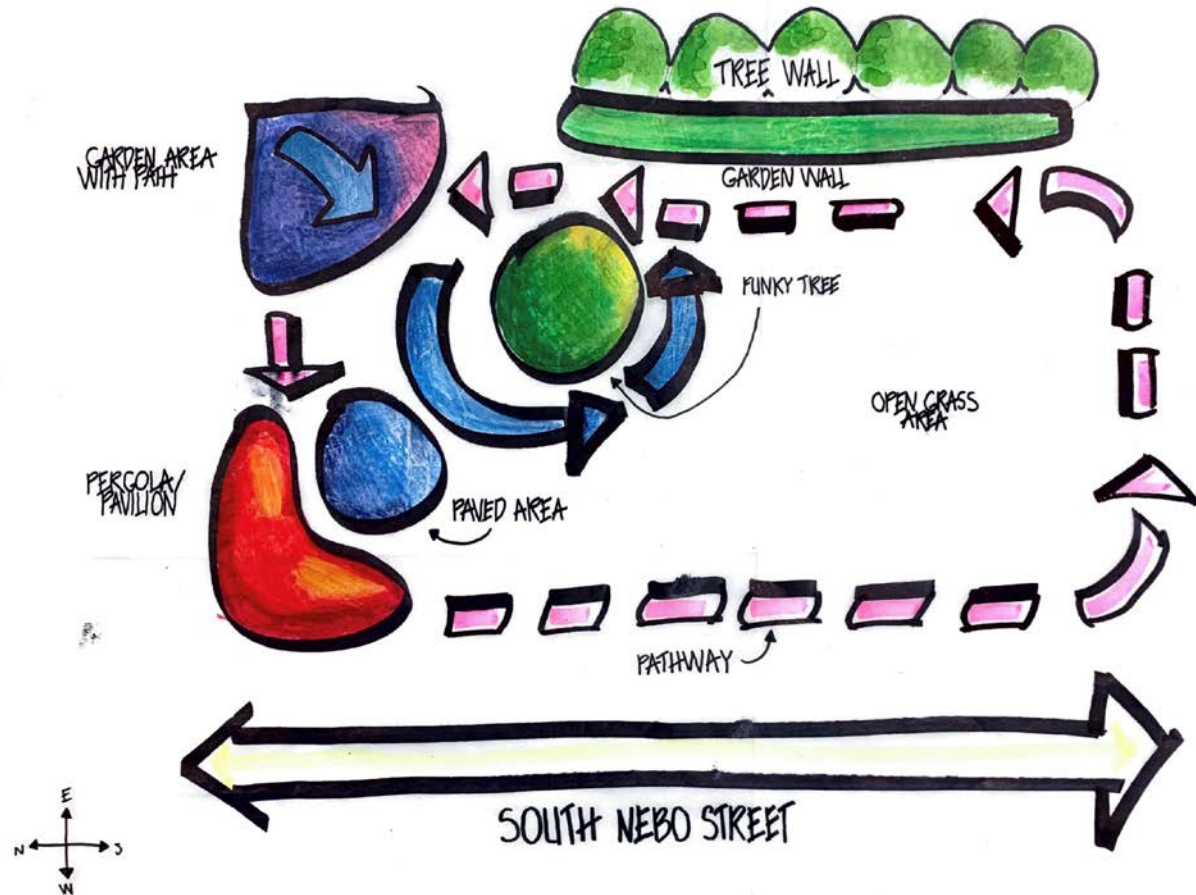
Flaws

- Not for all ages
- Not inviting
- Discourages people from visiting
- Upkeep



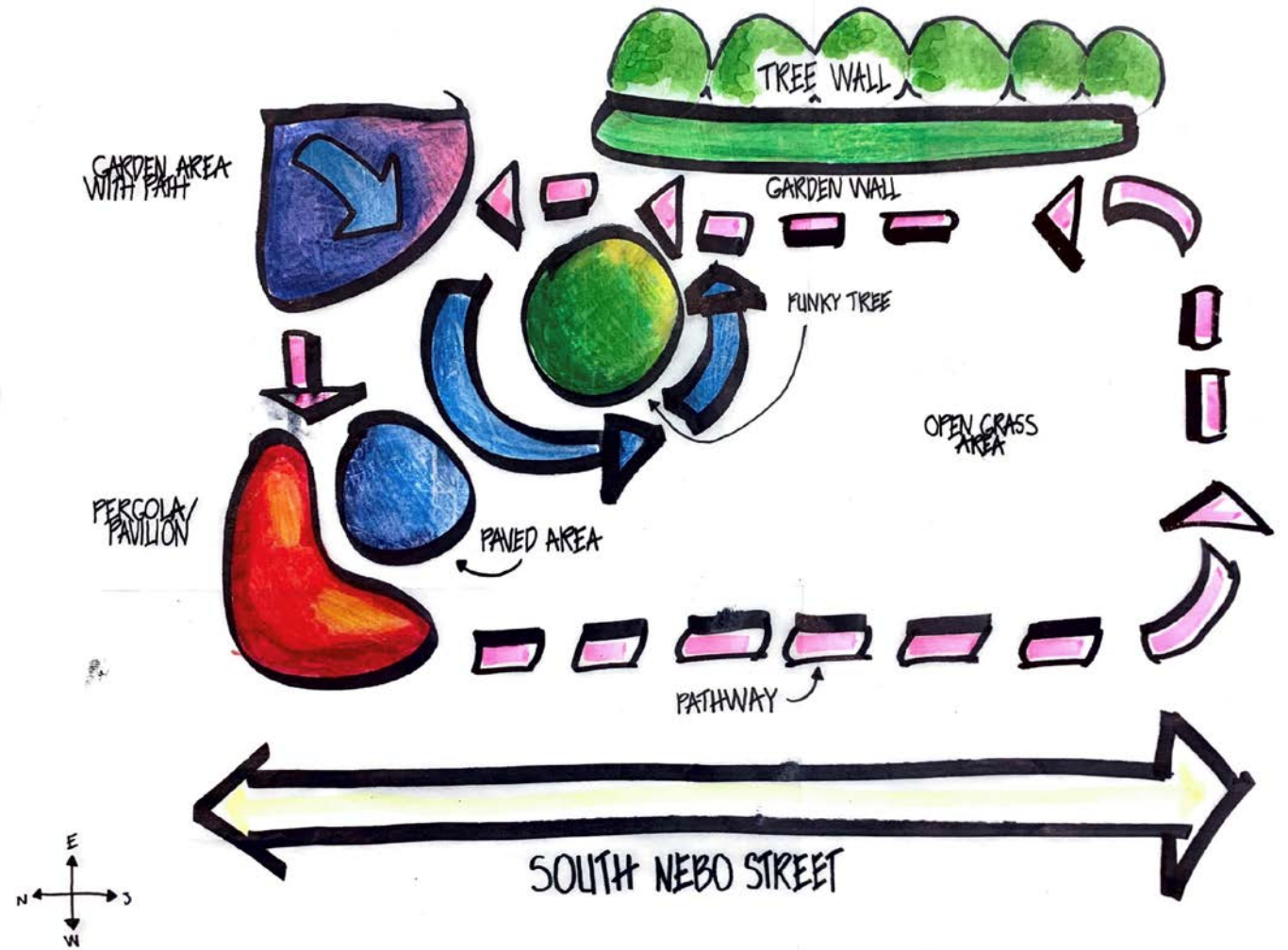
Final Concept

- For our final concept, we went smaller to allow for an open area for a multi-use space. Seating is still provided with the pavilion, which also provides some shade for the park. A centralized tree is the focal point of the park. With encompassing paths that line the park, we create a unified environment for people to enjoy and use.



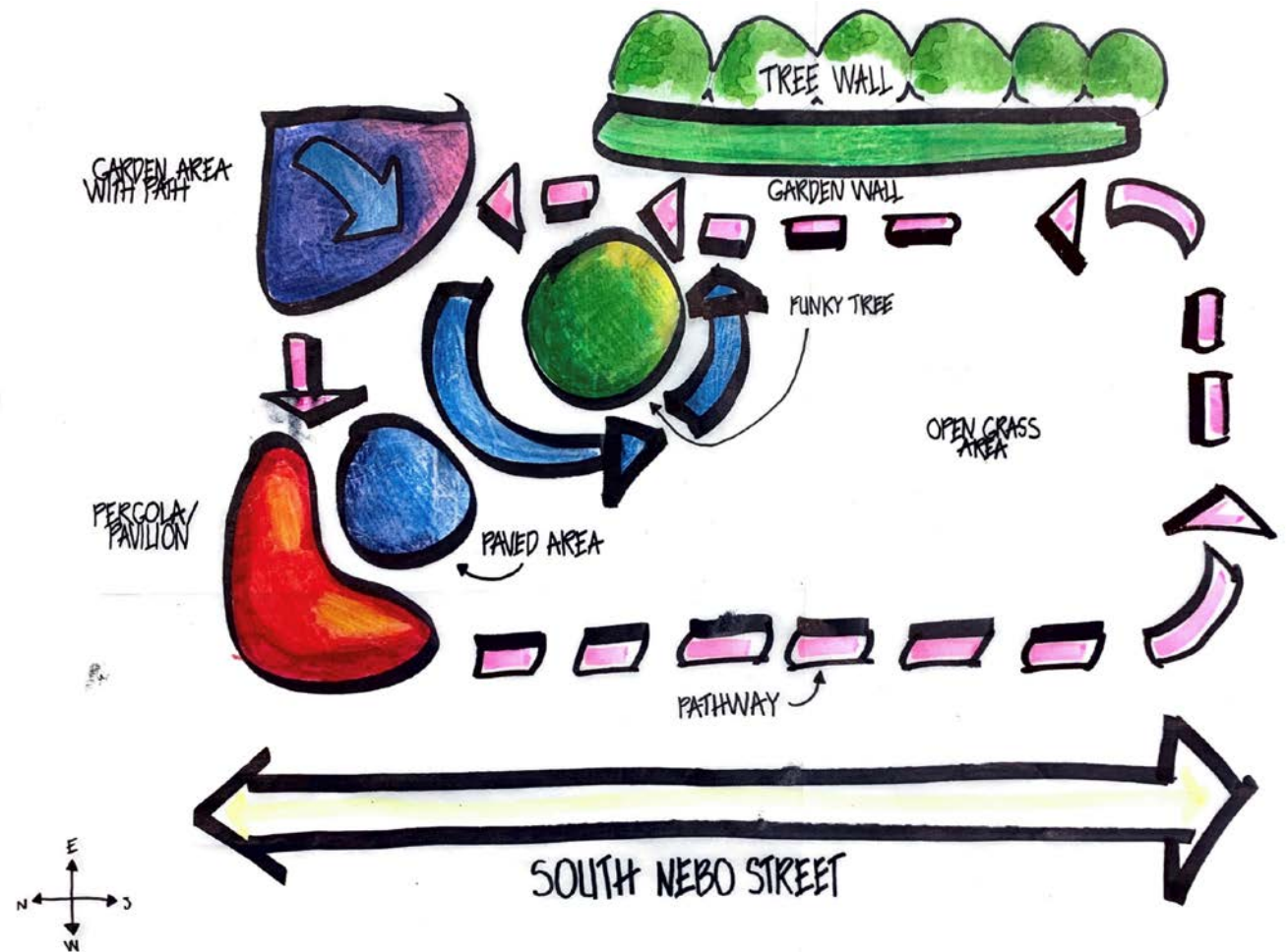
Bubble Diagram 2

- A large open area for dogs or kids to run around
- Pavilion and paved area for seating
- A tree with small bushes and such as the folly
- A garden space in the top left with garden walls for the community to use

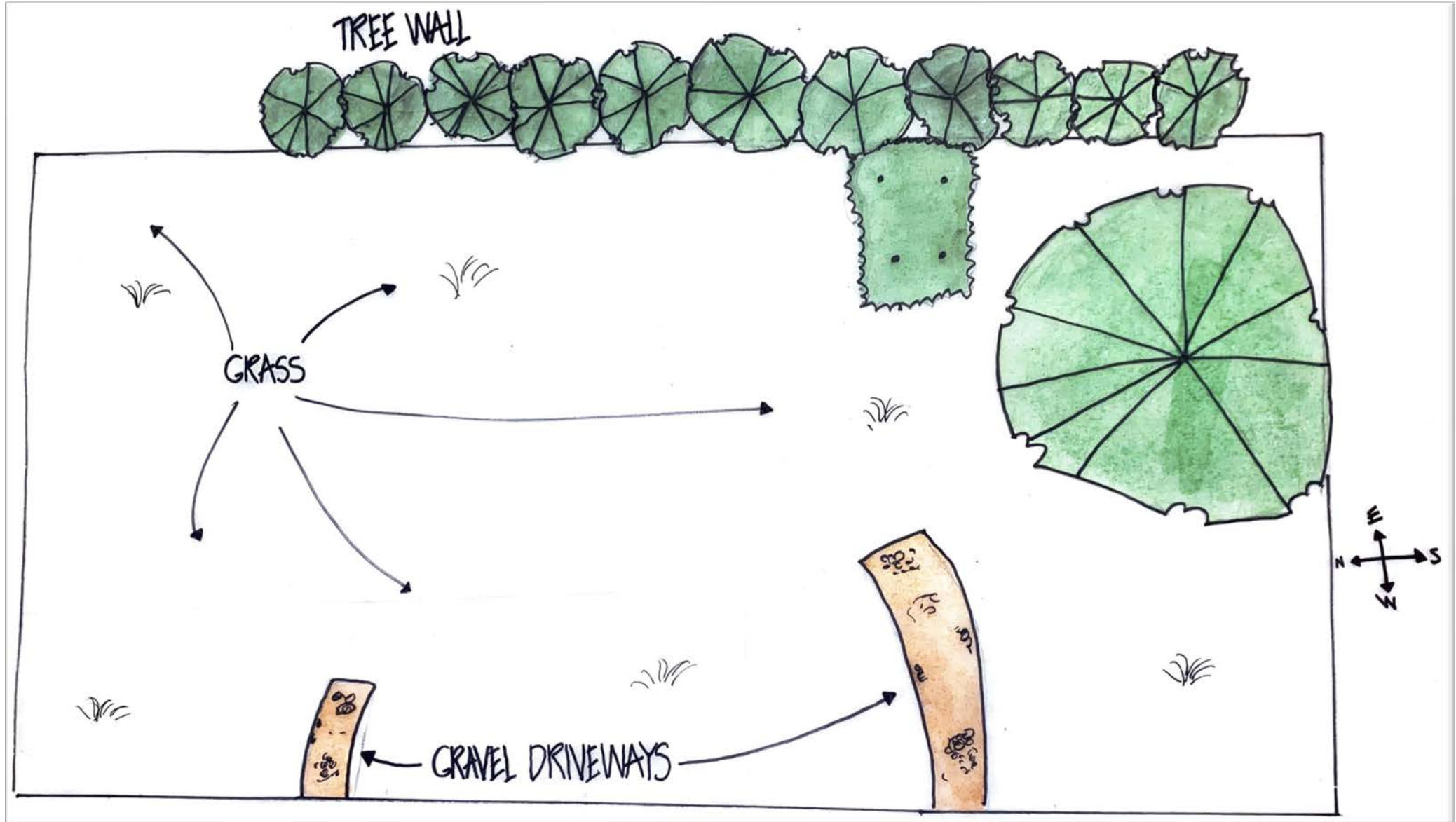


Flaws

- Doesn't have amenities
- Neighbors
- Not completely open
- No parking



Current site



Refined Plan View

