

Post Occupancy Evaluation

Riverside United Methodist Church

201 N Wheeling Avenue, Muncie, IN, 47303

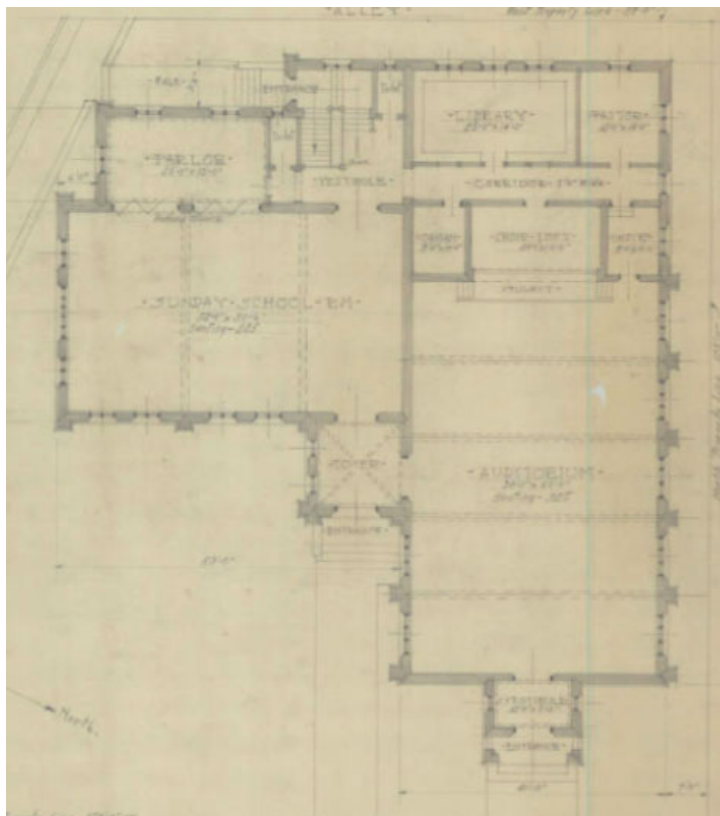
Team 2: Isabelle Copeland, Ava Blount, Sydnie Matula, Kenzi Stephenson,  
McKenna Anthony, Andrew Bradberry, Dalin Case, Devin Cleaver



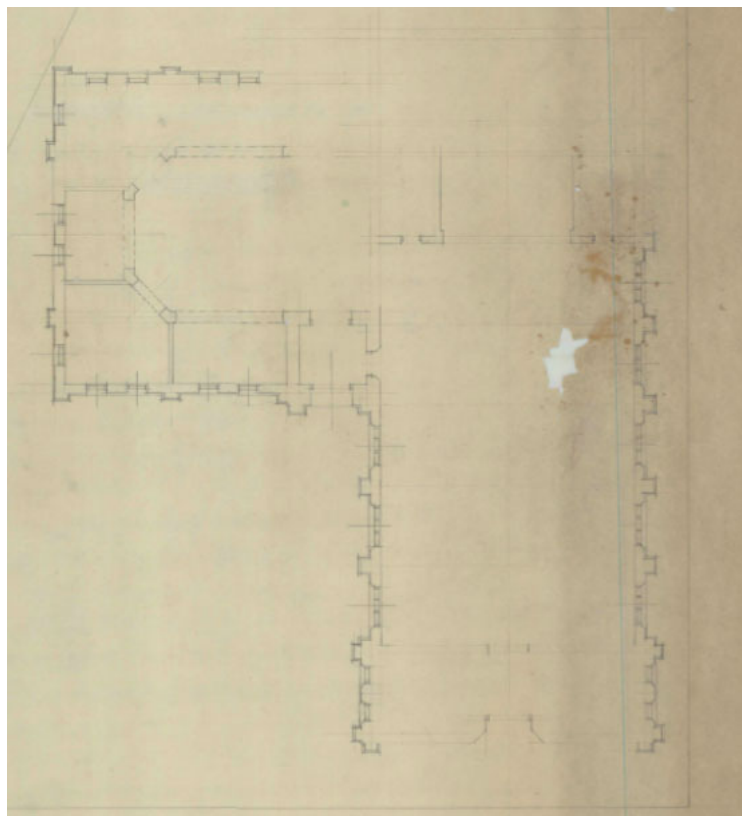
## Table of Contents

Contents	Page
Title Page	1
Table of Contents	2
Floorplan Keys	3
Physical Conditions	7
<ul style="list-style-type: none"><li>• Temperature, Lighting</li><li>• Noise, Air Quality</li><li>• Water Use/ Waste, Energy Efficiency</li></ul>	
Space	11
<ul style="list-style-type: none"><li>• Layout/Flow</li><li>• Wayfinding</li><li>• Safety</li><li>• Storage/Furnishings</li><li>• Accessibility</li><li>• Public/Private</li></ul>	
Ergonomics	21
<ul style="list-style-type: none"><li>• Work Station</li><li>• Body Relation</li></ul>	
Aesthetics	23
<ul style="list-style-type: none"><li>• Color Light/Dark</li><li>• Quality/ Effectiveness</li><li>• Durability</li><li>• Finishes</li><li>• Equipment</li></ul>	
Biophilia	28
<ul style="list-style-type: none"><li>• Nature Infused</li><li>• Window Locations</li><li>• Views</li></ul>	
Additional Notes	32

# Original Plans

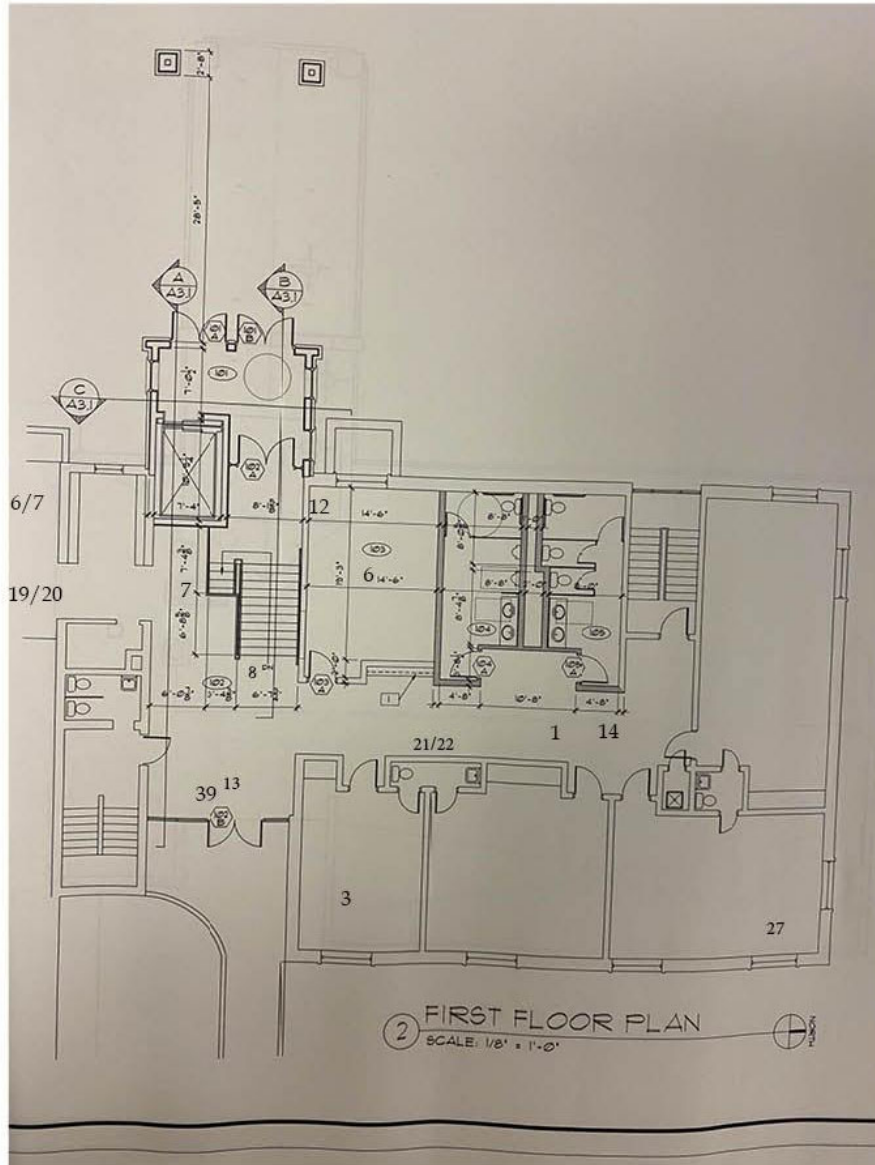


First Floor



Second Floor

# Educational Center Addition

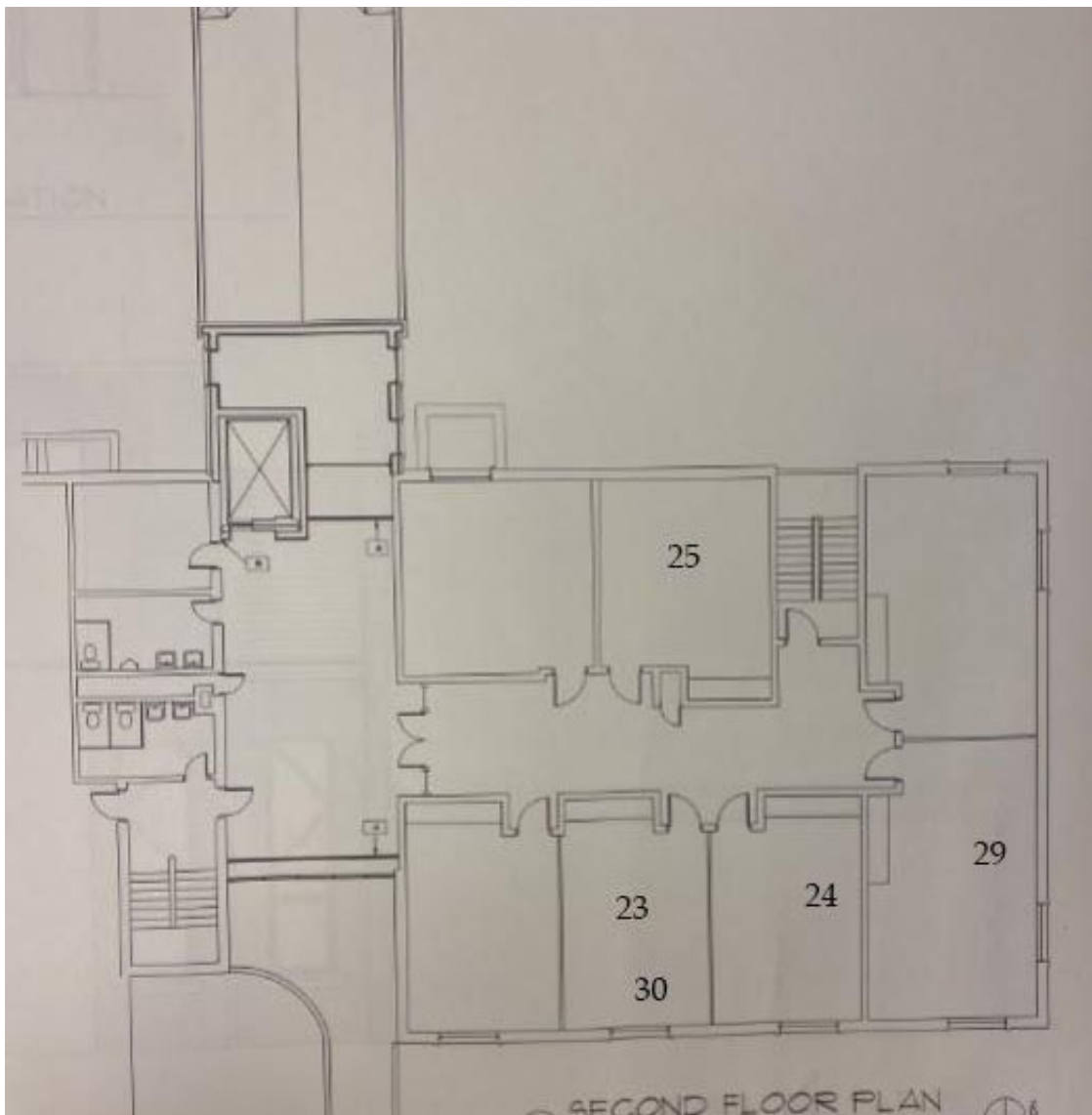


First Floor

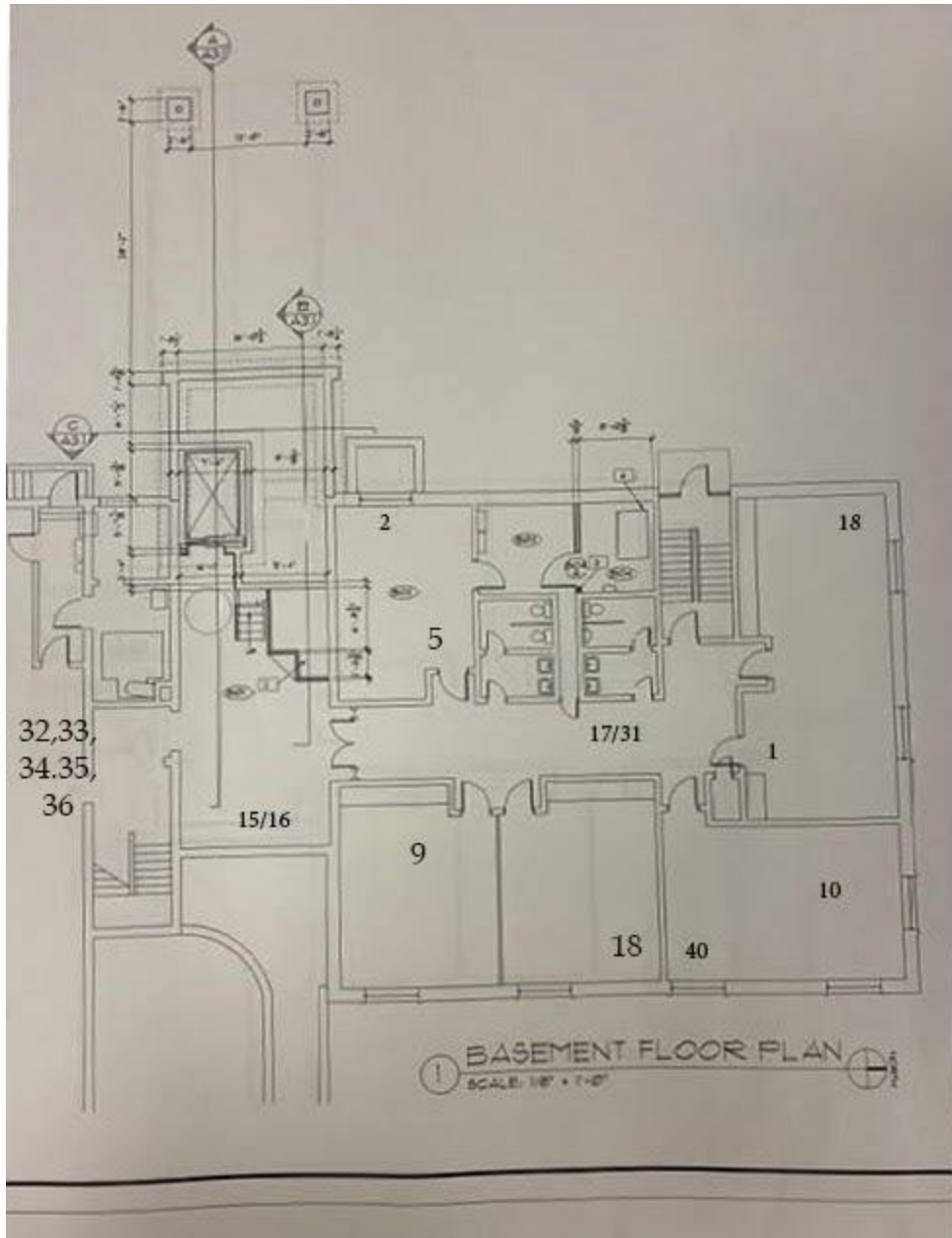
## Notes for all educational center addition floor plans:

- Images are labeled on the floor plans based on each image number specified in the POE below
- Not all images are labeled on these floor plans due to only being the educational center addition floor plans

### Second Floor



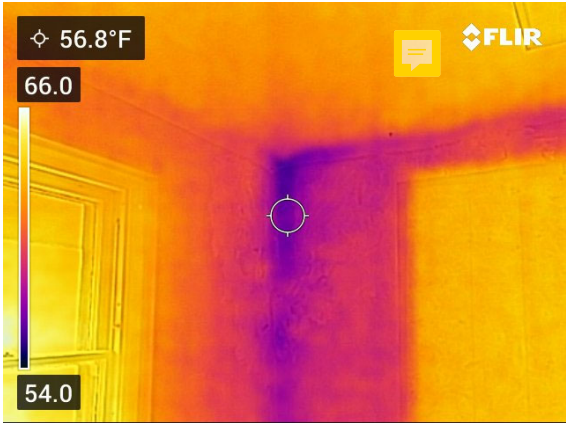
# Basement



# PHYSICAL CONDITIONS

**RATING: 2/5:** The temperature

throughout the space was really cold and drafty and the lighting wasn't bright throughout the entire building

TOPIC	OBSERVATIONS	SPACES
TEMPERATURE (CM)	<ul style="list-style-type: none"><li>● Temperature 56.8 degrees</li><li>● Basement was freezing, individual heaters placed misc.</li><li>● Basement is the coldest area</li><li>● Immediately felt a draft of cold air</li><li>● Draft seems like it is coming from the windows</li><li>● Warmer in kitchen/boiler room</li><li>● Heaters placed in each room</li></ul>  A thermal image from a FLIR camera showing a room with a temperature of 56.8°F. A color scale on the left ranges from 54.0°F (blue) to 66.0°F (yellow). The image shows a doorway and a window, with a white circle highlighting a specific area on the wall.	<ul style="list-style-type: none"><li>● Educational Center</li></ul>







AIR QUALITY

- Draft of air from each window(s).
  - Needs sealed
  - Could feel the cold air by putting hand near the window
  - Did not have to touch the window to know cold air was coming through



Image 2



Image 3

- Whole building

- Upstairs tiki theme room blinds

- Window AC unit

WATER USE/WASTE	<ul style="list-style-type: none"><li>● All sink faucets had high water pressure</li><li>● Low pressure toilets</li><li>● Needs more water pressure in a couple of restroom faucets</li><li>● Water fountain</li></ul>	<ul style="list-style-type: none"><li>● Whole building</li></ul>
ENERGY USE	<ul style="list-style-type: none"><li>● Individual heaters</li><li>● Heaters are placed in each room</li></ul>	<ul style="list-style-type: none"><li>● Educational center</li></ul>





Image 6

- Main ceremonial room



Image 7



Image 8



Image 9



Image 10

WAYFINDING	<ul style="list-style-type: none"><li>● Paper signs all around the church<ul style="list-style-type: none"><li>○ Pointing arrows</li></ul></li><li>● Exit signs<ul style="list-style-type: none"><li>○ Some exit signs were blinking or not working all together</li></ul></li></ul>	<ul style="list-style-type: none"><li>● Whole Building</li> <li>● Whole Building</li></ul>
------------	--------------------------------------------------------------------------------------------------------------------------------------------------------------------------------------------------------------------------------------------------------------------------------------	------------------------------------------------------------------------------------------------

SAFETY

- Exposed wires on terrace



Image 12



Image 13

- Exit signs
- Rails on the side of stairways
  - Carpet for anti-slip
- Unprotected electric box in main hallway

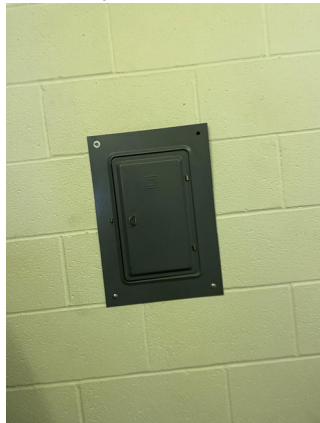


Image 14

- 
- Emergency lights

- Exposed wire on terrace

- Old entrance on back of entryway

- Entryway
- Ed. Center

- Exposed wire box



- Janitor/mechanical closets were not locked
- Crumbling foundation in between each side of the building
  - Water damage



Image 15

- 



Image 16

- Lights exposed without shield in painted hallway



Image 17

- 

- Educational Hallway
- Entryway
- Basement water damage

- Basement foundation issue

- Painted hallway in educational hallway


<p>STORAGE/ FURNISHINGS</p>	<ul style="list-style-type: none"> <li>● Newer side of the building is currently being used for storage. Clothing piled on tables Smaller items placed on tables/out in the open Little/no storage furniture Classrooms need more storage furniture Not a lot of furnishings in each classroom</li> <li>● Janitorial closets are very narrow</li> <li>● 2x4 ceiling tiles</li> </ul>	<ul style="list-style-type: none"> <li>● Educational center</li> <li>● Educational Center</li> <li>● Throughout</li> </ul>
<p>ACCESSIBILITY</p>	<div style="display: flex; align-items: center; justify-content: center;">  <div style="margin-left: 20px;"> <p>Image 18</p> </div> </div> <ul style="list-style-type: none"> <li>● Elevator to second floor</li> <li>● Ramp on back of the building (although ramp is not in use)</li> <li>● Toilet handrails</li> <li>● Many bathrooms need 5 foot clearance for handicap accessible bathroom</li> <li>● Ceremonial benches spaced close together- not wheelchair accessible</li> </ul>	<ul style="list-style-type: none"> <li>● Entryway</li> <li>● Whole Building</li> <li>● Ceremonial Space</li> </ul>



Image 19

- Ceremonial Space



Image 20

- Ceremonial Space

- May be one wheelchair accessible space in between benches if the chairs occupying the space are removed
- Not a very wide walkway in between benches
- Two people standing side by side in the walkway is very uncomfortable and crowded
- Small childrens toilet

- Ceremonial Space

- Educational Room



Image 21

- 



Image 22

- Small childrens restroom is hard for adult trying to help since there is minimum space

- Lower level educational center restroom-connected to room

- Entrance to children's bathroom

PUBLIC/PRIVATE	<ul style="list-style-type: none"><li>● Private classrooms</li><li>● Private storage rooms</li><li>● Private mechanical rooms (needs to be locked)</li><li>● Public restrooms</li><li>● Public/Private kitchen? (looks as though there is a line for the public to be served from the kitchen)</li><li>● Public boiler room (has somewhat of a stage and chairs)</li></ul>	<ul style="list-style-type: none"><li>● Whole Building</li></ul>
----------------	----------------------------------------------------------------------------------------------------------------------------------------------------------------------------------------------------------------------------------------------------------------------------------------------------------------------------------------------------------------------------	------------------------------------------------------------------

# ERGONOMICS

**RATING: 2/5:** Not a lot of biophilic elements and

their offices are very cluttered with little storage throughout. As well as in some rooms there were just foldable tables.



TOPIC	OBSERVATIONS	SPACES
<p>WORK STATION</p>	<ul style="list-style-type: none"> <li>● Offices to the right of ceremonial room cluttered               <ul style="list-style-type: none"> <li>○ Lots of furnishings</li> </ul> </li> <li>● Many desks- no storage (enough?)</li> <li>● Very little biophilia in offices but there are a couple of plants</li> <li>● Front desk/reception area looked somewhat cluttered with a lot of loose paper laying around</li> <li>● More file cabinets may be needed?</li> </ul> <div style="display: flex; justify-content: space-around; align-items: center;"> <div data-bbox="550 810 915 1289">  </div> <div data-bbox="964 1020 1078 1052"> <p>Image 23</p> </div> </div> <ul style="list-style-type: none"> <li>● <div style="display: flex; justify-content: space-around; align-items: center;"> <div data-bbox="550 1304 915 1782">  </div> <div data-bbox="964 1545 1078 1577"> <p>Image 24</p> </div> </div> </li> </ul>	<ul style="list-style-type: none"> <li>● Ceremonial Room</li> <li>● Whole Building</li> <li>● Office space</li> </ul>



Image 25

- Office space



Image 26

- Office space



Image 27

- Educational Side Conference room

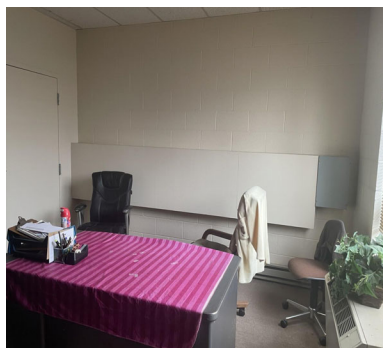


Image 28

- Receptionist desk



Body Relation		
---------------	--	--

**AESTHETICS**

**RATING: 2/5:** There are rooms upstairs that don't

make sense with the paintings on the wall like the paint splatters. The black wall makes the room feel dark. The lights in the basement are broken.



TOPIC	OBSERVATIONS	SPACES
<p>COLOR LIGHT/DARK</p>	<ul style="list-style-type: none"> <li>Upstairs “bar” area is painted dark colors=dark room</li> </ul>  <p>Image 29</p> <ul style="list-style-type: none"> <li></li> </ul>  <p>Image 30</p>	<ul style="list-style-type: none"> <li>Educational Center</li> <li>Upper level (educational center) themed bar (tiki theme)</li> <li>Office plant</li> </ul>



Image 31

- Painted
- hallways of educational center
- Luminaries create an unsettling feeling
  - Not very welcoming
  - Very gloomy feeling within the whole area
- Lightest by the back windows where the ramps are located due to the large windows
- Not a lot of natural light
- LEDs need replaced
- Whole Buildings

QUALITY/  
EFFECTIVENESS

- Kitchen has newer, quality appliances
- Kitchen needs surrounding material replacement- ceiling tiles

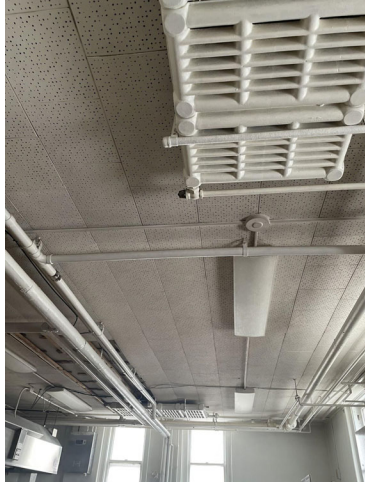


Image 32



Image 33





Image 34

- Kitchen on ceremonial side

- Kitchen ceiling (exposed pipes)

- Entrance view of kitchen

- Ceiling tile is bare above kitchen

	<ul style="list-style-type: none"> <li>● Mechanical closet where water is turned on and heated</li> <li>● Exposed wires/pipes</li> </ul>  <p style="text-align: center;">Image 35</p>  <p style="text-align: center;">Image 36</p>	<ul style="list-style-type: none"> <li>● Kitchen</li> <li>● Missing ceiling tiles</li> </ul>
<p>DURABILITY</p>	<ul style="list-style-type: none"> <li>● Doesn't seem to have a lot of durability since building is older</li> <li>● More durability in basement due to cement brick</li> <li>● Very little durability with luminaries</li> <li>● No durability to the basement wall due to water damage</li> </ul>	<ul style="list-style-type: none"> <li>● Whole Building</li> </ul>

FINISHES	<ul style="list-style-type: none"> <li>● 2 rooms to the right of main educational hallway have bright red, thick carpet <ul style="list-style-type: none"> <li>○ Hard to clean</li> <li>○ Eyesore</li> </ul> </li> <li>● Upstairs educational room- back of the main hallway <ul style="list-style-type: none"> <li>○ 3 rooms painted/decorated to a theme- out of place/ not used enough</li> </ul> </li> <li>● Woods are all different throughout the building <ul style="list-style-type: none"> <li>○ Wood walls still function just are very outdated</li> </ul> </li> </ul>	<ul style="list-style-type: none"> <li>● Educational Center</li> <li>● Educational Center</li> <li>● Whole Building</li> </ul>
EQUIPMENT		

# **BIOPHILIA**

**RATING:1/5:** There are very few biophilic elements there are only plants in the offices. Some of the views outside the windows are just brick walls.

**TOPIC**

**OBSERVATIONS**

**SPACES**

NATURE  
INFUSED

- Minimal fake plants placed randomly around building
- 
- Mural of nature scene in hall
  - Very old and chipped



Image 37



Image 38

- plants in offices by reception area
  - Very minimal nature infused

- Whole Building

- Entryway to ceremonial room





Image 39

- Entryway
- Old main entrance- now leaking water into basement wall (foundation issue)





### Additional Notes:

- Choir area has very short rail (meets code but is uncomfortable)
- Sanctuary wall water damage and many cracks
- Average attendance pre-covid 60 people
- 2 congregations use this space
- Lots of damage to ceiling tiles
- Out of date carpet
- Exposed storage in office area
- Lot of unused space
- Roof damage
- Electrical boxes were not closed and secure
- Ramps are damaged and not in use
- Lights need upgraded to LED
- Paint on the walls needs redone
- No use of biophilia
- Mechanical closet in the kitchen is how the water is heated and must be turned on for heated water
- Some very small bathrooms and door widths
- Space is not easily accessible to everyone
- Room temp of the entire space was chilly
- Old and different use of woods

